

FINN[®]

CORPORATION[®]

9281 LeSaint Drive • Fairfield, Ohio 45014
Phone (513) 874-2818 • Fax (513) 874-2914



Activate
Your Warranty
By Registering
TODAY!!!



T30 Diesel HydroSeeder[®]

CE-Compliant

Parts and Operator's Manual

Model **MS** Serial No. _____

NOTES



ACTIVATE YOUR FINN EQUIPMENT WARRANTY

IMPORTANT INFORMATION ON ACTIVATING YOUR FINN EQUIPMENT WARRANTY!!!

IT IS IMPERATIVE THAT YOU, THE PURCHASER, COMPLETE THE FOLLOWING STEP IN ORDER TO
ACTIVATE THE FINN CORPORATION LIMITED WARRANTY.



**COMPLETE THE “EQUIPMENT REGISTRATION” FORM ON
THE NEXT PAGE AND MAIL TO THE FINN CORPORATION.**

**IF FINN CORPORATION DOES NOT HAVE YOUR COMPLETED REGISTRATION
FORM ON FILE, YOUR WARRANTY CLAIM WILL BE DENIED.**

**Once your Finn equipment has been registered, your Finn Limited Warranty will
be activated per the warranty statement on the other side of this notice.**

<<What should you do if you need repairs or parts under Warranty?>>



1. NOTIFY FINN CORPORATION OF THE FAILURE OF MATERIAL OR WORKMANSHIP
1-800-543-7166 Extension (246)
WARRANTY@FINNCORP.COM



2. AFTER YOU OR YOUR SERVICE DEALER NOTIFY FINN, FINN WILL:

- VERIFY THAT WE HAVE YOUR “REGISTRATION” ON FILE
 - VERIFY THAT THE WARRANTY PERIOD IS IN EFFECT
 - VERIFY THAT THE RELATED PART(S) ARE INCLUDED IN THE SCOPE OF WARRANTY (PENDING FINN’S INSPECTION OF DEFECTIVE PARTS)
 - SEND YOU REPLACEMENT PART(S) AND A “WARRANTY INFORMATION PACKET”
 - REQUEST YOU FOLLOW ALL INSTRUCTIONS AS NOTED IN THE “PACKET”
- Fill out the Parts Tag. (Completely)
 - Attach the Parts Tag to the defective part(s).
 - Return the part(s) and the completed Warranty Claim Form to Finn Corporation using the return shipping label. **(Within 2 weeks)**
 - Tape the Orange identifier sheet, marked with the W/RMA# on the outside of the box you are shipping the defective part(s) to Finn in.



Finn Corporation Commercial Limited Warranty

Effective February 20, 2006

OUR WARRANTY TO YOU:

Finn Corporation warrants to you, the original purchaser, for use (or rental to others for use) all new construction machinery, parts and attachments (except those referred to herein) that are manufactured by Finn to be free from defects in material and workmanship for a period of 12 months from date of purchase or 1200 hours of use, whichever comes first.

Replacement parts provided under the terms of this warranty are warranted for the remainder of the warranty period applicable to the product to which parts are installed, as if parts were original components of the product.

WHAT FINN WILL DO:

Upon notification of Finn concerning a failure of material or workmanship in accordance with the above stated Warranty, Finn Corporation will:

- Verify claim falls within the valid warranty time frame.
- Verify the product and equipment has been **registered** with Finn in order to be eligible for warranty coverage.
- Upon affirmation of warranty period and registration, Finn will send to you a new or repaired replacement part(s), whichever Finn elects and a "Warranty Claim Information packet" containing instructions for processing the warranty claim.
- Evaluate the part when defective part is returned. Note: Failure to return defective part within **two weeks** will result in an invoice being sent to the customer. In addition, if damage to a part is determined not to be covered under the warranty, the customer will be billed for the replacement part.
- Reconcile costs with customer for parts and shipping, as determined by our inspection of failed parts, and confirmation of warranty coverage, per the terms of this warranty.
- Correction of nonconformities, in the manner provided above, shall constitute fulfillment of all liabilities of Finn Corporation under this warranty.

WHAT YOU MUST DO TO OBTAIN WARRANTY SERVICE:

- As the purchaser covered under the above limited warranty you must **REGISTER** the equipment with Finn as such owner. Should registration not be on file with Finn Corporation, your **warranty will be void**. (See Operators manual for Registration Form)
- Notify Finn Corporation of any failure of material or workmanship as described under this warranty.
 - Web notification: Warranty@Finncorp.com
 - Phone 1-800-543-7166 extension 246
- Complete the required steps in the "Warranty Claim Information packet" (which Finn will send you upon notice of your notification) and return the defective part(s) as directed in the packet to Finn Corporation.

WHAT THE WARRANTY DOES NOT COVER:

1. Allied equipment or trade accessories not manufactured by it, such as but not limited to ignitions, starters, tires, batteries, hose, magnetos, carburetors, engines, labor, or like or unlike equipment or accessories including discharge hoses. (Such being subject to the warranty, if any, provided by their respective manufacture's).
2. Secondhand, used, altered, or rebuilt machines or parts.
3. Defects, malfunctions or failures resulting from accidents, abuse, misuse, improper servicing, or lack of performance of required operational guidelines and maintenance service, as outlined in the Finn Corporation's Operators Manual(s).
4. The warranty shall be null and void to the extent any defect or failure of the products warranted arises out of or is caused by accessories or component parts not manufactured or supplied by Finn Corporation, whether same are supplied by purchaser, dealers, or any other party.

THIS IS THE ONLY EXPRESS WARRANTY ON OUR PRODUCTS:

We neither assume nor authorize anyone to assume for us any other express warranty. The Distributor/Dealer has no authority to make any representation or promise on behalf of Finn Corporation or to modify the terms or limitations of this warranty in any way.

THIS WARRANTY THEREFORE SHALL BE IN LIEU OF ALL OTHER WARRANTIES, EXPRESS OR IMPLIED, INCLUDING, BUT NOT LIMITED TO, ANY IMPLIED WARRANTY OF MERCHANTABILITY OR FITNESS FOR A PARTICULAR PURPOSE.

LIMITATIONS ON OUR RESPONSIBILITY WITH RESPECT TO PRODUCTS PURCHASED:

THE REMEDIES OF THE USER SET FORTH HEREIN ARE EXCLUSIVE, WITHOUT REGARD TO WHETHER ANY DEFECT WAS DISCOVERABLE OR LATENT AT THE TIME OF DELIVERY OF THE PRODUCT TO THE PURCHASER.

The essential purpose of this exclusive remedy shall be to provide the original purchaser with repair or replacement of parts that prove to be defective within the period and under the conditions previously set forth. This exclusive remedy shall not have failed of its essential purpose (as that term is used in the Uniform Commercial Code) provided Finn remains willing to repair or replace defective parts within a commercially reasonable time after it obtains actual knowledge of the existence of a particular defect.

IN NO EVENT SHALL FINN BE LIABLE FOR ANY SPECIAL, CONSEQUENTIAL, INCIDENTAL OR INDIRECT DAMAGES, INCLUDING LOST PROFITS OR LOST COMMERCIAL OPPORTUNITIES, WITH RESPECT TO THE SALE OF THE ABOVE WARRANTED PRODUCT OR ANYTHING DONE IN CONNECTION THEREWITH, OR FOR PROPERTY DAMAGE SUSTAINED BY A PERSON CLAIMING TO BE A THIRD PARTY BENEFICIARY OF A SURVIVING WARRANTY UNDER THE LAW OF ANY JURISDICTION.

NOTICE:

FINN CORPORATION URGES THE USE OF ONLY FINN CORPORATION SUPPLIED PARTS AND ATTACHMENTS TO ASSURE PROPER PERFORMANCE AND SAFE OPERATION OF FINN CORPORATION EQUIPMENT. INSIST ON PARTS AND ATTACHMENTS MANUFACTURED OR SUPPLIED BY FINN CORPORATION WHEN YOU PURCHASE, REPAIR OR REPLACE YOUR FINN EQUIPMENT AND ATTACHMENTS. BECAUSE FINN CORPORATION CANNOT ASSURE THAT PARTS AND ATTACHMENTS NOT MANUFACTURED OR SUPPLIED BY FINN MEET FINN CORPORATION'S QUALITY STANDARDS, SPECIFICATIONS, OR OPERATING REQUIREMENTS, OUR WARRANTY IS NOT EFFECTIVE TO THE EXTENT ANY FAILURE OF OR DEFECT IN A FINN CORPORATION PRODUCT ARISES FROM OR IS CAUSED BY PARTS, ATTACHMENTS OR COMPONENTS NOT ORIGINATING WITH FINN CORPORATION. USE OF FINN CORPORATION EQUIPMENT WITH PARTS AND ATTACHMENTS NOT MANUFACTURED OR SUPPLIED BY FINN COULD RESULT IN PERSONAL INJURY.

Effective February 20, 2006

INDEX

Safety First	1
Attachments	2
Valve Operation	3
Starting Procedure	4
Material Capacities	4-5
Tank Capacity Chart	6
Discharge Nozzle Selection	7
Hydraulic System	7
Lubrication Chart	8
Pump Maintenance	9
Finn Model T30-CE Technical Specifications	10
Notes	11-12
Parts Section	13-33
Notes	14
Pictorial Reference	15
Suction, Discharge, And Recirculation	16-17
Clump Assembly	18-19
Hose Reel Assembly	20-21
Hydraulic System	22-23
Hydraulic Pump Drive Assembly	24
Hydraulic Agitator Drive Assembly	25
Agitator and Bearing Assembly	26-27
Common Loose Parts & Engine	28-29
Control Panel Wiring	30
Tool Kit & Seal Repair Kits	31
Decals	32-33

NOTES

SAFETY FIRST

With any piece of equipment, new or used, the most important part of its operation is **SAFETY!**

Finn Corporation encourages you and your employees to familiarize yourselves with your new equipment and to stress safe operation.

The first six pages of this manual are a summary of all the main safety aspects associated with this unit. Be sure to read completely before operation of machine.



This symbol is used throughout the operation and maintenance sections of this manual to call attention to safety procedures.

- Pay Attention -



DANGER: Immediate hazards which **WILL** result in severe personal injury or death.



WARNING: Hazards or unsafe practices which **COULD** result in severe personal injury or death.



CAUTION: Hazards or unsafe practices which **COULD** result in minor personal injury or product or property damage.

IMPORTANT: Indicates that equipment or property damage could result if instructions are not followed.

NOTE: Gives helpful information.

Finn Corporation

CALIFORNIA

Proposition 65 Warning

The engine exhaust and some of its constituents are known to the State of California to cause cancer, birth defects, and other reproductive harm.

CALIFORNIA

Proposition 65 Warning

Battery posts, terminals and related accessories contain lead and lead compounds, chemicals known to the State of California to cause cancer and reproductive harm. Wash hands after handling.

OPERATION & MAINTENANCE MANUAL

FOR THE CE-COMPLIANT

FINN T30 HYDROSEEDER®

ATTACHMENTS (OPTIONAL):

1. Discharge hoses: Discharge hoses are available in 50 ft. (15 m) and 100 ft. (30 m) lengths up to a total of 150 ft. (45 m). Hose of a greater length may adversely affect the discharge distance, and the discharge time of the HydroSeeder®. All connections are camlock quick operating fittings, including the connection to the end of the discharge piping. A nozzle is connected to the end of the hose next to the remote discharge valve. Once the hose is connected, the HydroSeeder® is ready to operate. Flow through the hose and the nozzle is controlled by the remote discharge valve. When using this valve, the recirculation valve on the HydroSeeder® MUST BE OPEN to allow flow at times when the remote valve is closed. See Figure 2 on page 9.



DANGER: The recirculation valve must be open when using a remote valve. If valve is not open, extreme heat will occur resulting in damage and/or bodily injury.

2. Hose Reel: The live hose reel mounts on top of the unit. The 150 foot (45 m) capacity electric rewind reel will wind up and store empty hose. It is wired to the unit's battery.
3. Air Gap Fill Pipe: A bolt on the air gap fill pipe is available that mounts directly to the raised hatch liner and swings into position when the hatch lid is open.

VALVE OPERATION:

The base HydroSeeder® is equipped with three (3) independently operated ball valves to control slurry flow (see Fig. 2). The first valve is the recirculation valve. An open recirculation valve allows flow back into the tank. The second valve is the pump discharge valve. An open pump discharge valve allows slurry to flow through the discharge hose. The third valve, located at the end of the discharge hose is the remote valve. An open remote valve allows discharge of the slurry onto the area being covered.



WARNING: Never engage (turn on) the slurry pump clutch when the recirculation valve and either the pump discharge or remote valve is closed. Pump is running with slurry flow closed-off which will result in extreme heat generation causing damage and/or bodily injury. The recirculation valve must always be open and material flowing back into the tank when using the remote valve. A closed remote valve in conjunction with a closed or plugged recirculation will cause extreme heat resulting in damage and/or bodily injury.

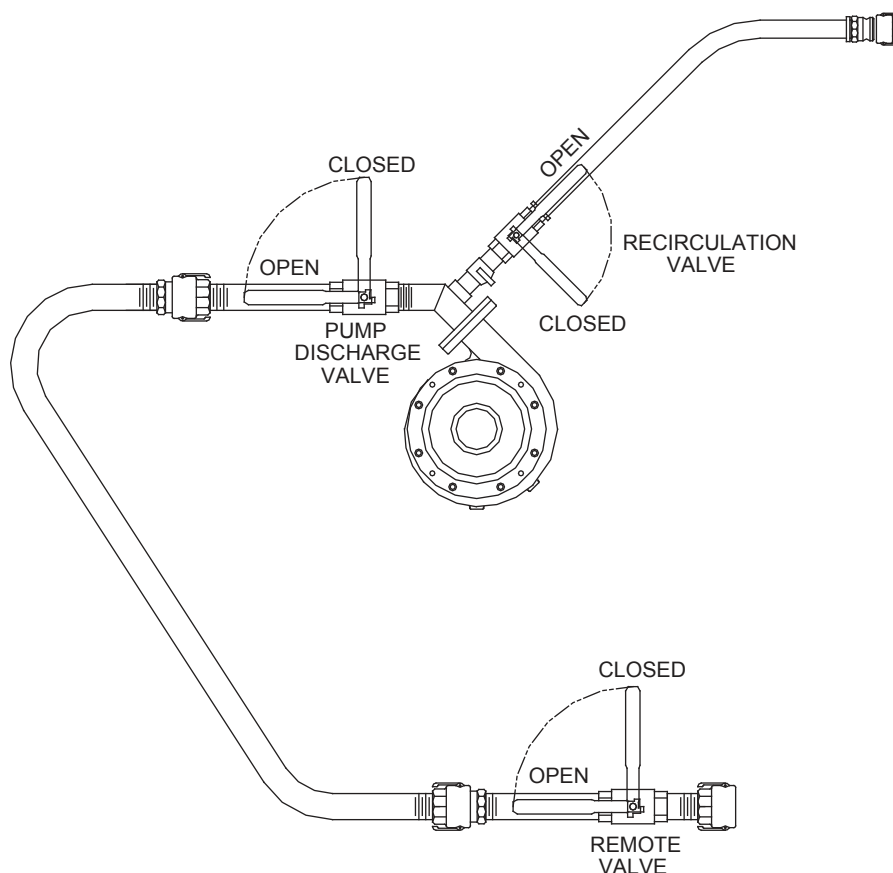


FIGURE 1

STARTING PROCEDURE:



CAUTION: See safety section of the manual (pages 2-4) before operating the machine.

Before starting, open the recirculation valve, close discharge valve, disengage (turn off) the clutch, and place the agitator control in the neutral position.

1. Set throttle about 1/4 open.
2. Pull Choke control out.
3. Turn the key clockwise until the starter catches and engine fires.
4. Push the Choke control in for even running.

NOTE: This engine has a safety system which will shut the engine off if the engine temperature goes above or if the oil pressure decreases below an acceptable level.

AREA COVERAGE - MATERIAL CAPACITY:

To determine the coverage per load for any HydroSeeder[®], three questions must be answered prior to the application. First, is the job to be done “one step” (which is when the seed, fertilizer and mulch are applied proportionally per load) or “two step” (which is when the seed and fertilizer are applied alone and then covered by mulch as a second operation)? Second, at what rates (usually in pounds (kg) per 1,000 square feet (92.9 square meters), or pounds (kg) per acre) are the seeding materials to be applied? Finally, what are the loading capacities of the HydroSeeder[®]?

Application rates vary for different geographic locations, but in general, seed is applied at 6-10 pounds (2.72-4.54 kg) per 1,000 square feet (92.9 square meters); fertilizer is applied at a rate of approximately 400 pounds (181.44 kg) per acre; and fiber mulch is applied at 1500 to 2000 pounds (680.39 to 907.18 kg) per acre. (Note: There are 43,560 square feet (4,046.86 square meters) in an acre). Local agronomists, agricultural extension agents, or soil and water conservation officials should be contacted for more specific information on application rates for a given area.

The following tables show loading versus coverage rates for the Finn T30. Table A shows rates for “one step” applications. The coverage area is determined by the fiber mulch capacity of the HydroSeeder[®], and the rate at which it is applied. Table B shows the area coverage when seeding only, where little or no mulch is applied. The coverage area is determined by the granular solids capacity of the HydroSeeder[®], and the rate at which the solids are applied.

TABLE A**USING SEED, FERTILIZER AND MULCH**

Unit	Amount of Material in Tank (pounds(kilograms))			Covrage Area
	<u>Seed</u>	<u>Fertilizer</u>	<u>Mulch</u>	<u>Sq. Ft. (Sq. m.)</u>
T30	28 lbs (13 kg)	32 lbs (15 kg)	120 lbs (54 kg)	3,485 (324)

Above Table is based on 1,500 lbs (680.39 kg) of mulch, 400 lbs (181.44 kg) of fertilizer and 345 lbs (159.49 kg) of seed (8 lbs (3.63 kg)/1,000 square feet (92.9 square meters)) per acre.

Table A Example: For T30

120 lbs (54.43 kg) Mulch per Tank

$$\frac{120 \text{ lbs (54.43 kg) Mulch per Tank}}{1,500 \text{ lbs (680.39 kg) Mulch per Acre}} = .08 \text{ Acre per Load} = 3485 \text{ sq. ft. (323.77 m}^2\text{)}$$

400 Pounds (181.44 kg) Fertilizer per Acre x .08 Acre = 32 Pounds (14.51 kg) Fertilizer per Load

345 Pounds (159.49 kg) Seed per Acre x .08 Acre = 28 Pounds (12.70 kg) Seed per Load

TABLE B**SEED AND FERTILIZER ONLY**

Unit	Amount of Material in Tank (pounds(kilograms))			Coverage Area	
	<u>Seed</u>	<u>Fertilizer</u>	<u>Total</u>	<u>(sq. ft.(sq. m.))</u>	<u>Acreage (Hectare)</u>
T30	230 lbs (104 kg)	270 lbs (122 kg)	500 lbs (226 kg)	28,750 (8,763)	0.66 (.27)

Above Table is based on rates of 8 lbs (3.63 kg) seed and 9.2 lbs (4.17 kg) fertilizer per 1,000 square feet (92.9 square meters).

Table B Example: For T30

$$\frac{500 \text{ lbs (226.40 kg) Tank Capacity (Solids)}}{8 \text{ lbs (3.63 kg) Seed} + 9.2 \text{ lbs (4.17 kg) Fertilizer per 1,000 sq. ft. (92.9 m}^2\text{)}} = 28,750 \text{ sq. ft (2,670.96 m}^2\text{) per Load}$$

$$\frac{8 \text{ lbs (3.63 kg) Seed}}{1,000 \text{ sq. ft. (92.9 m}^2\text{)}} \times 65,340 \text{ sq. ft. (6,070.28 m}^2\text{)} = 522 \text{ lbs (236.78 kg) Seed per Tank}$$

TANK CAPACITY CHART:

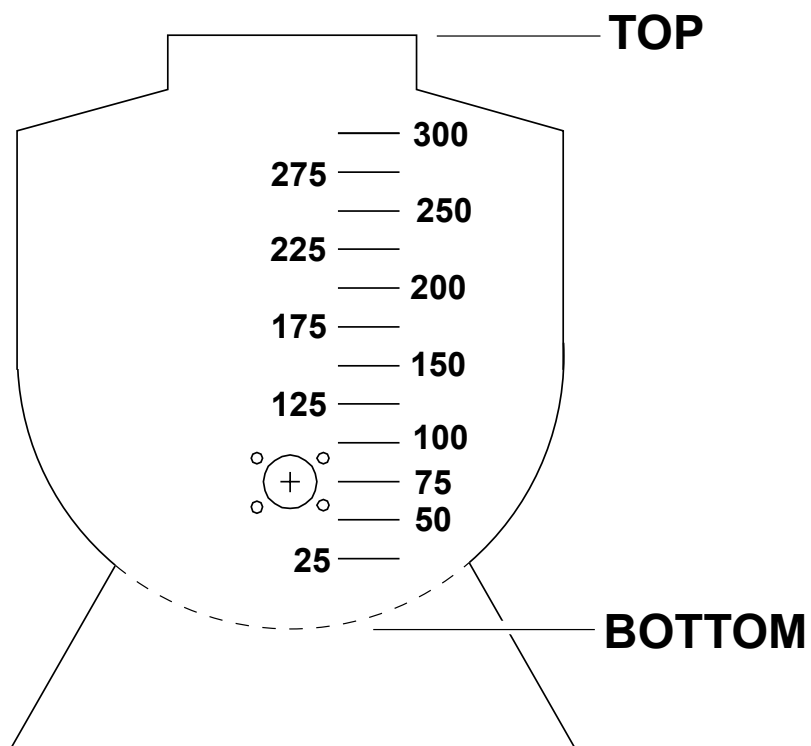


FIGURE 2

T-30					
Gallons (liters)		in. (cm) from top		in. (cm) from bottom	
300	(1136)	6.25	(15.9)	32.75	(83.2)
275	(1041)	8.75	(22.2)	30.25	(76.8)
250	(946)	11	(27.9)	28	(71.1)
225	(852)	13.5	(34.3)	25.5	(64.8)
200	(757)	16	(40.6)	23	(58.4)
175	(662)	18.25	(46.4)	20.75	(52.7)
150	(568)	20.5	(52.1)	18.5	(47.)
125	(473)	23	(58.4)	16	(40.6)
100	(379)	25.25	(64.1)	13.75	(34.9)
75	(284)	27.75	(70.5)	11.25	(28.6)
50	(189)	30.75	(78.1)	8.25	(21.)
25	(95)	34	(86.4)	5	(12.7)

DISCHARGE NOZZLE SELECTION:

Nozzles are stored in the tool box. This HydroSeeder[®] is equipped with three nozzles - one long distance and two ribbon fan nozzles. The following chart tabulates the approximate distance, width, and discharge time of the nozzles when used with the platform option. When using the base unit these factors will vary according to the type and length of hose being used.

Nozzle	Distance (A)	Width (B)	Discharge Time
Long Distance	Up to 70 ft (21m)	-	12 min.
Narrow Ribbon	Up to 45 ft (14m)	10 ft (3m)	8 min.
Wide Ribbon	Up to 35 ft (10m)	20 ft (6m)	8 min.

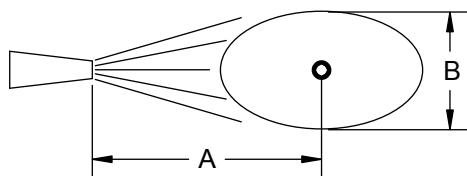


FIGURE 4

HYDRAULIC SYSTEM:

The hydraulic system on your Finn HydroSeeder[®] is designed to give trouble free service, when properly maintained. The most important areas of maintenance are the hydraulic oil and filtration. The reservoir holds 6 gallons (22.70 liters) of ISO Grade 46 Hydraulic Oil. The hydraulic oil should be replaced per the lubrication schedule or if the oil becomes milky or it gives off a burnt odor. The hydraulic oil filter must be replaced on schedule with a 25 absolute micron filter - Finn part #021618. The hydraulic system relief is factory set at 2,250 psi.

LUBRICATION AND FLUIDS CHART

Ref. No.	Location	Lubricant	Frequency	Number
1	Check Grease Level in Pressure Lubricator	SL	Daily	1
2	Grease Agitator Shaft Bearings	CL	Daily	2
3	Check Engine Oil Level	MO	Daily	1
4	Change Engine Oil and Filter	MO	See Engine Manual	1
5	Grease Pump Bearings	CL	Weekly	2
6	Check Hydraulic Fluid Level	HO	Weekly	1
	Change Hydraulic Fluid and Filter	HO	Seasonally	1
7	Check Fuel Tank	FU	Daily	1

LUBRICANT OR FLUID USED

SL	Seal Lube (Sodium Base)
CL	Chassis Lubricant
MO	Motor Oil See Engine Manual for Recommendations
HO	ISO Grade 46 Hydraulic Oil
FU	Diesel

TIME KEY

DAILY (8 hours)



WEEKLY (40 Hours)



SEASONALLY (500 hours)



SEE ENGINE MANUAL



FLUID CAPACITIES

Diesel - 5.5 Gallons (20.8 L)
 Engine Oil - 4 Quarts (3.8 L)
 Hydraulic Fluid - 6 Gallons (23 l)

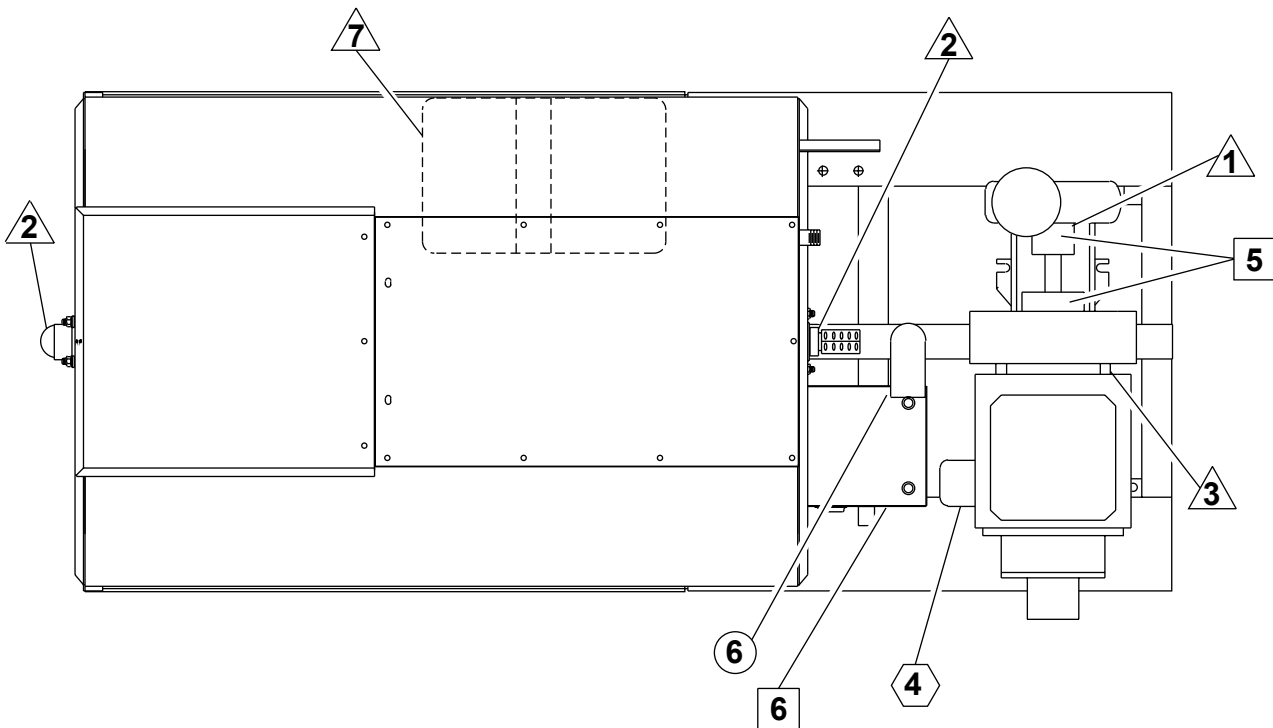


FIGURE 3

PUMP MAINTENANCE:



CAUTION: Pump maintenance to be done only while engine is not running, and battery cables are disconnected.

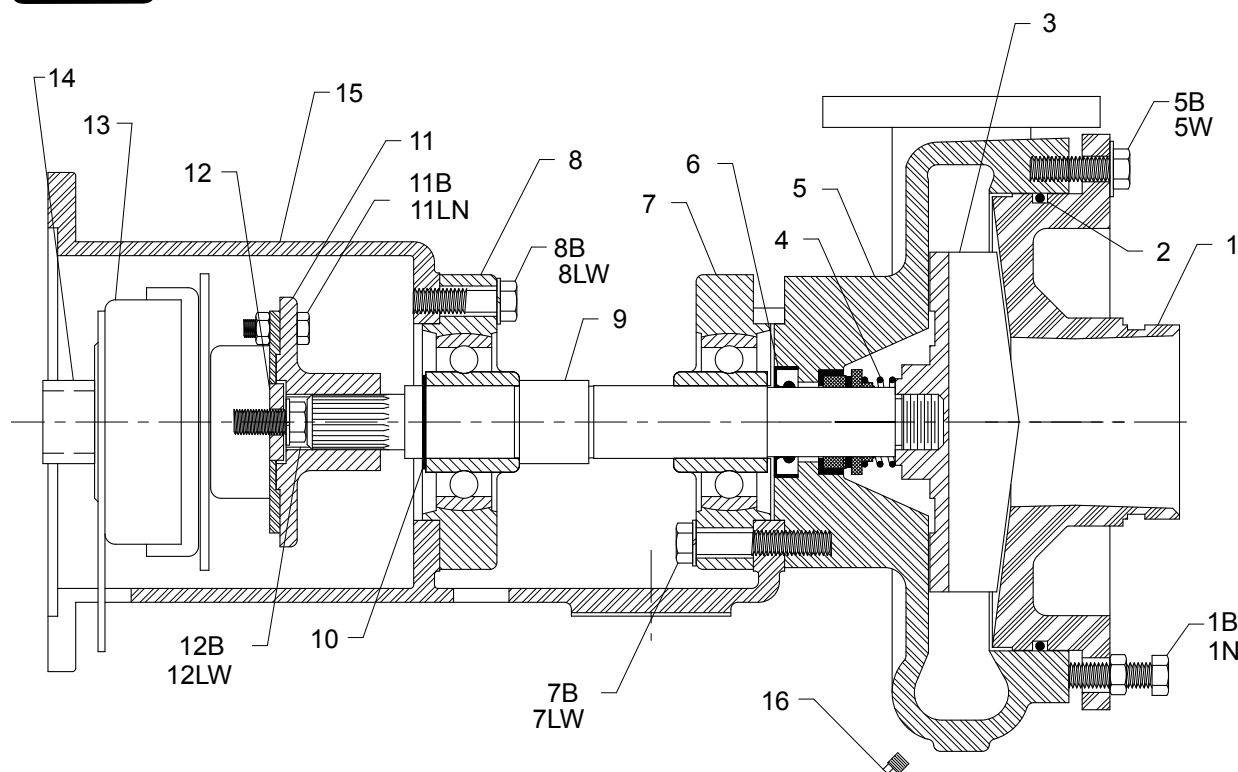


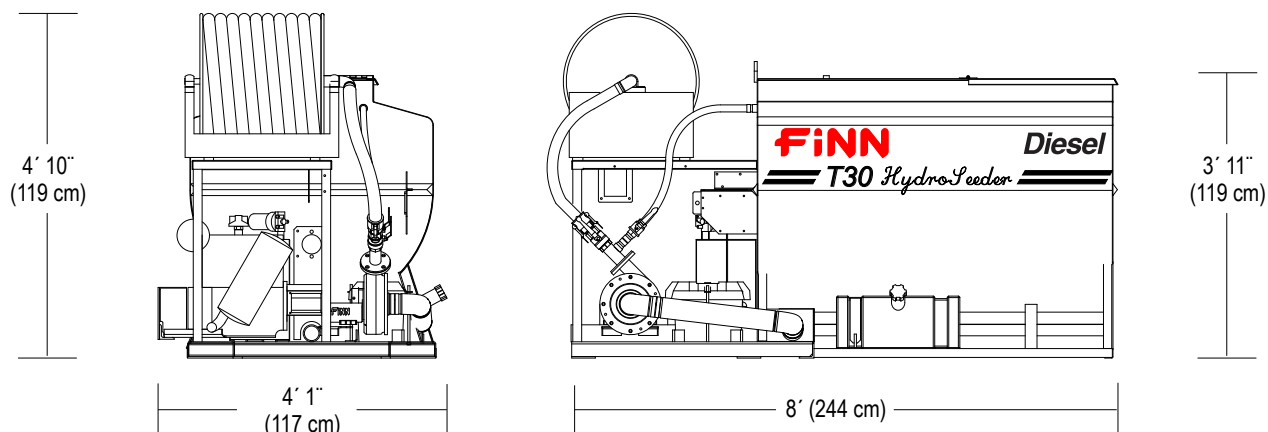
FIGURE 4

PUMP ASSEMBLY

Ref. No.	Description	No. Req'd	Ref. No.	Description	No. Req'd
1B	Suction Cover Bolt	4	8B	Bearing Bolt	4
1N	Suction Cover Nut	4	8LW	Bearing Washer	4
1	Suction Cover	1	9	Pump Shaft	1
2	O-Ring	1	10	Snap Ring	1
3	Impeller	1	11	Drive Hub	1
4	Mechanical Seal	1	11B	Drive Hub Bolt	2
5	Pump Casing	1	11N	Drive Hub Nut	2
5B	Suction Cover Bolt	8	12	Clutch Retainer	1
5W	Suction Cover Washer	8	12B	Locking Bolt	1
6	Radial Lip Seal	1	12W	Lock Washer	1
7	Casing Bearing	1	13	Clutch	1
7B	Bearing Bolt	4	14	Clutch Spacer	1
7LW	Bearing Washer	4	15	Pump Frame	1
8	Frame Bearing	1	16	Casing Drain Plug	1

NOTE: See parts manual for Finn part number

FINN MODEL T30-CE TECHNICAL SPECIFICATIONS



OPERATING PARAMETERS:

- AIR TEMPERATURE+41°F to +104°F (+5°C to +40°C)
- HUMIDITY50% RH @ +104°F (+40°C)
- ALTITUDESuitable for use @ 3,281' (1,000 m) above mean sea level
- TRANSPORTATION & STORAGE-13°F to +131°F (-25°C to +55°C)
TEMPERATURE

POWERKohler Diesel 18.2 hp (14 kW), electric start, air-cooled, direct injection diesel, oil guard protection

ENGINE SAFETY SYSTEMLow oil pressure, high water temperature shutoff

TANK SIZE310 gallon (1,175 liter) liquid capacity
260 gallon (984 liter) working capacity

FUEL TANK CAPACITY5.5 gallon (20.8 liter)

PUMPCentrifugal 3" x 1-1/2" (7.5 cm x 3.75 cm), 65 GPM @ 60 psi
(227 lpm @ 414 kPa), 34" (1.9 cm) solid clearance

PUMP DRIVEDirect drive through electric clutch, pump drive is independent of agitator operation

AGITATIONMechanical paddle agitation and liquid recirculation

AGITATOR DRIVE.....Reversible, variable speed hydraulic motor (0-129 rpm), with control lever at front and rear of unit

DISCHARGE DISTANCEUp to 70' (23 m) from end of hose

MAX. MATERIAL CAPACITY500 lbs. (277 kg) granular solids, 100 - 120 lbs. (45 - 55 kg) fiber mulch

NOZZLES(1) narrow fan, (1) wide fan & (1) long distance

HOSE ATTACHMENT50' x 1-1/4" (15.24 m x 3.18 cm) semi-rigid polybraid or 50' x 1-1/2" (15.24 m x 3.81 cm) collapsible hose, remote valve

EMPTY WEIGHT1,050 lbs. (477 kg)

NOTES

NOTES

T30 Hydroseeder[®]

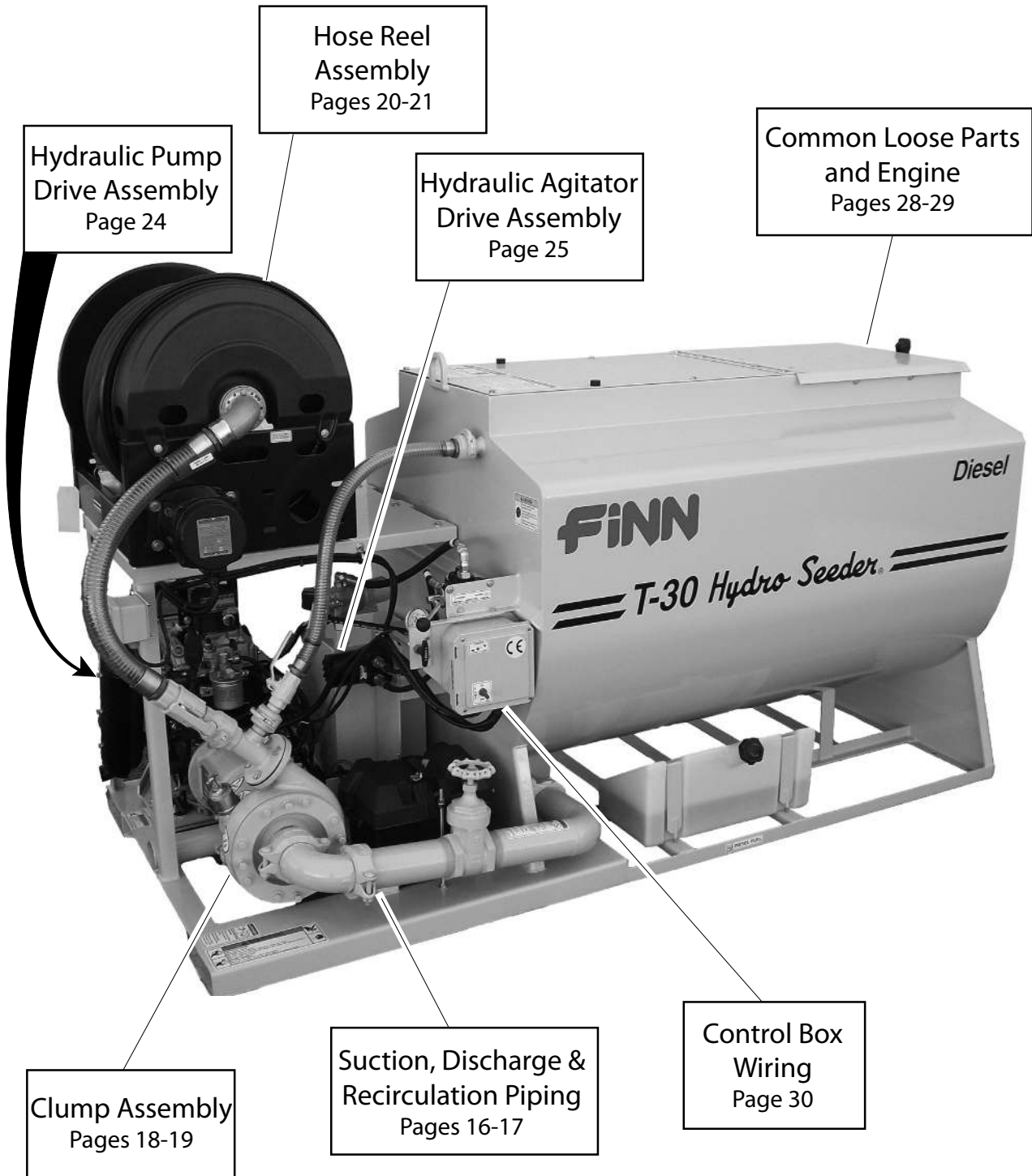
CE-COMPLIANT

Parts Manual

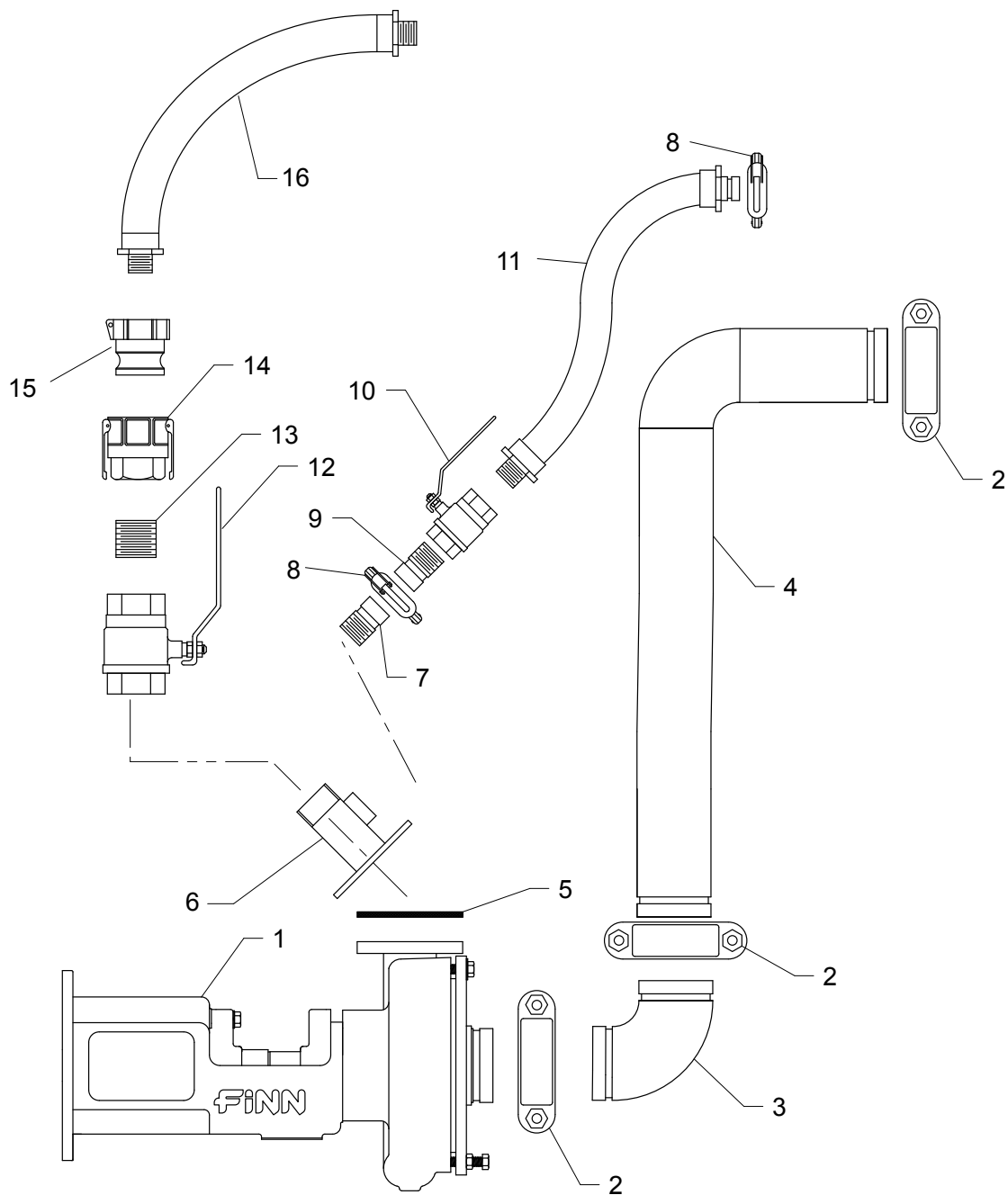
Model MS

NOTES

PICTORIAL REFERENCE



Hydraulic System	Pages 22-23
Agitator & Bearing Assembly	Pages 26-27
Tool Kit & Seal Repair Kits	Page 31
Decals	Pages 32-33

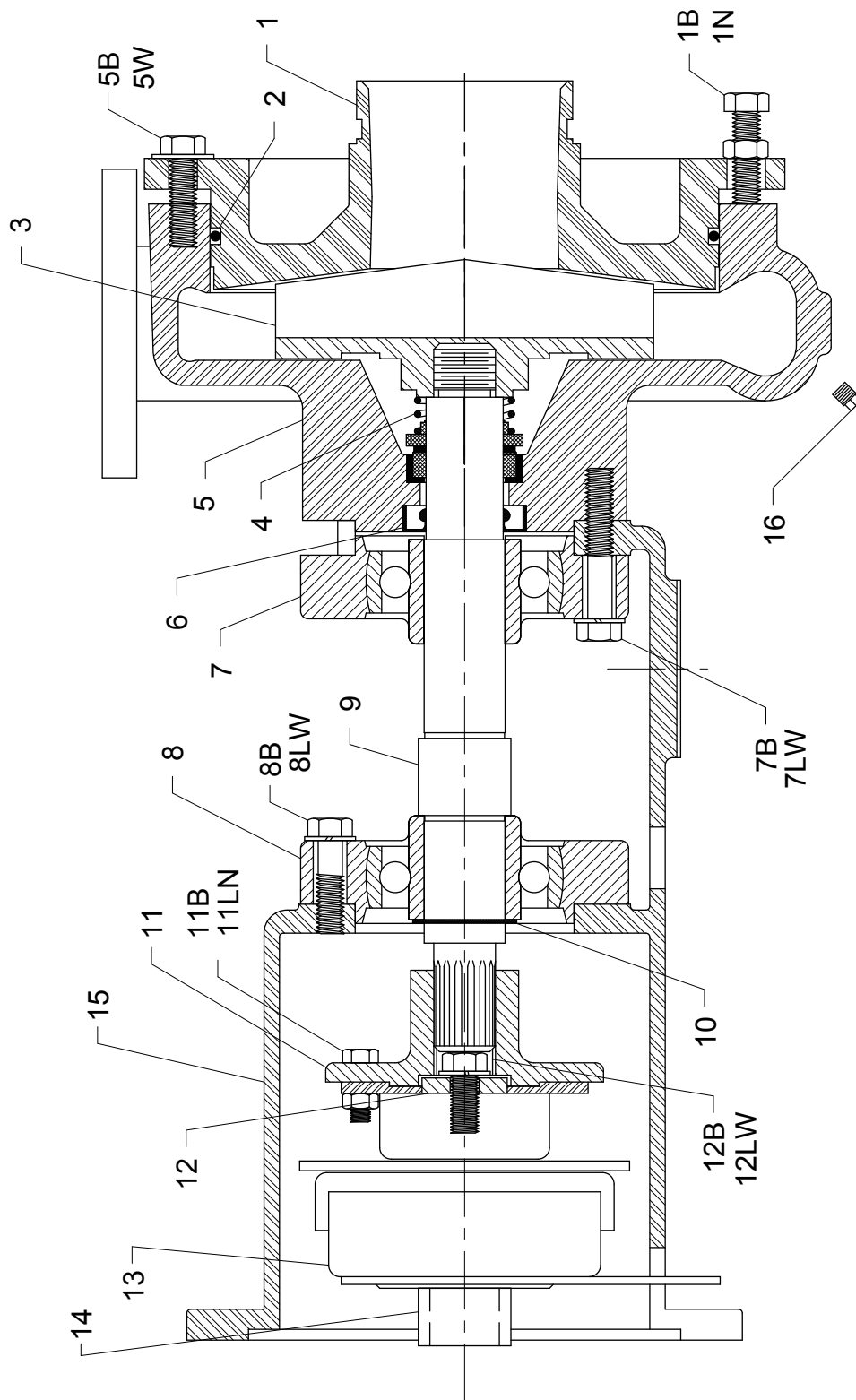


**WHEN ORDERING PARTS, BE SURE TO STATE
SERIAL NUMBER OF MACHINE**

SUCTION, DISCHARGE AND RECIRCULATION PIPING

Ref. No.	Part Number	Description	No. Req'd
1	080713	Clump Assembly (<i>See Pages 34-35 for parts breakdown</i>)	1
2	080366	Pipe Clamp	3
	002439	Clamp Gasket	1 per
3	002868	90° Grooved Elbow	1
4	085210	Suction Pipe Weldment	1
5	008469	Discharge Flange Gasket	1
6	080558-01	Discharge Flange Pipe	1
7	005083-07	Recirculation Nozzle	1
8	005156	Pipe Clamp	2
	005183	Clamp Gasket	1 per
9	005083-08	Recirculation Nozzle	1
10	021559	Ball Valve	1
11	080650	Recirculation Hose	1
12	007710	Ball Valve	1
13	160309	Close Nipple	1
14	080377	Female Coupler	1
	006515	Coupler Gasket	1 per
15	080378	Male Coupler	1
16	085252	Lead-In Hose	1

**WHEN ORDERING PARTS, BE SURE TO STATE
SERIAL NUMBER OF MACHINE**

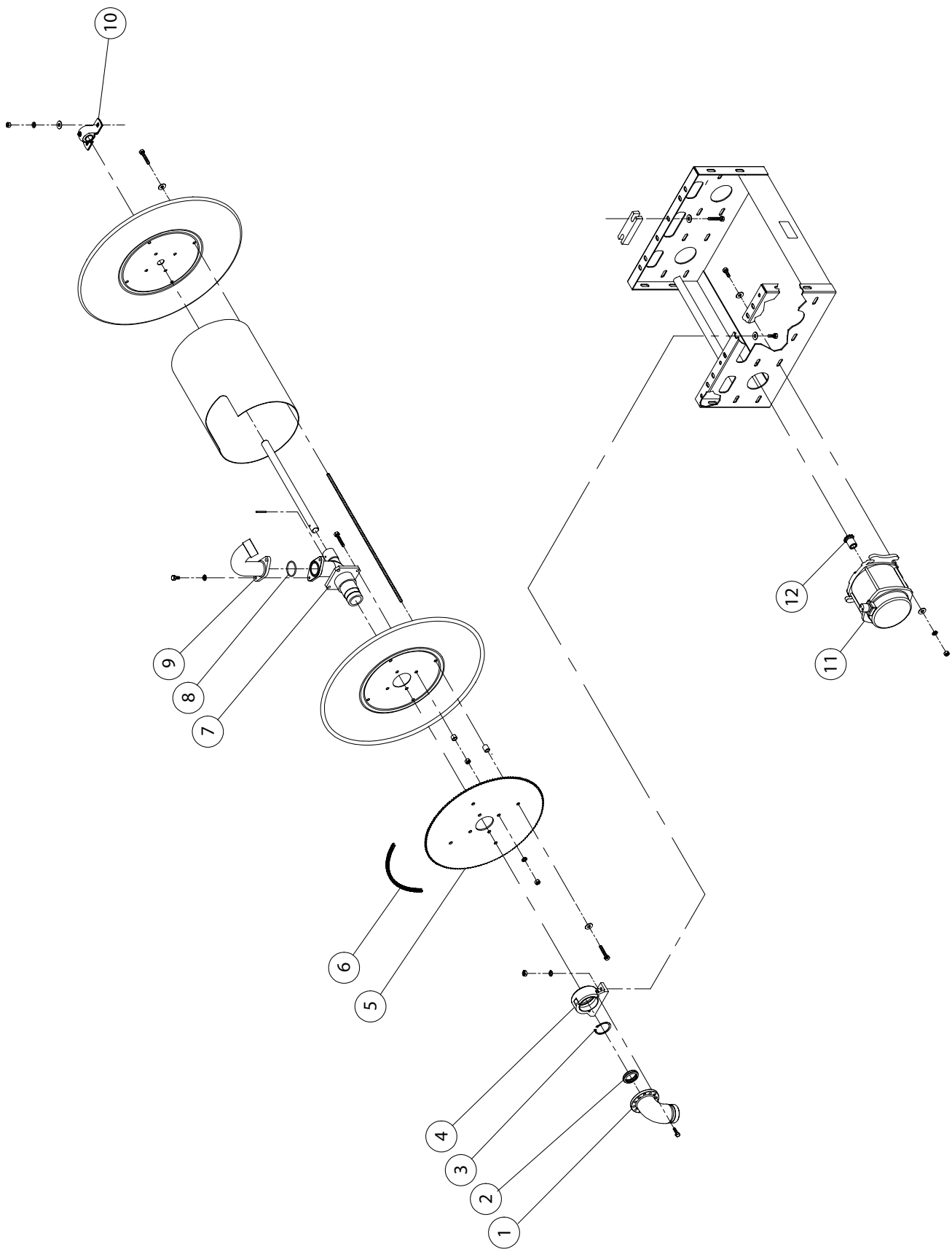


**WHEN ORDERING PARTS, BE SURE TO STATE
SERIAL NUMBER OF MACHINE**

CLUMP ASSEMBLY

Ref. No	Part Number	Description	No. Req'd
	080713	Clump Assembly	1
1	080489	Suction Cover	1
1B	0X0720	Suction Cover Bolt	4
1N	000Y07	Suction Cover Nut	4
2	080499	O-Ring	1
3	080488	Impeller	1
4	080485	Mechanical Seal	1
5	080487	Pump Casing	1
5B	0X0720	Suction Cover Bolt	8
5W	000W07	Suction Cover Washer	8
6	080493	Radial Lip Seal	1
7	080498	Casing Bearing	1
7B	0X0740	Bearing Bolt	4
7LW	00W07L	Bearing Lock Washer	4
8	080498	Frame Bearing	1
8B	0X0728	Bearing Bolt	4
8LW	00W07L	Bearing Lock Washer	4
9	080491	Pump Shaft	1
10	080497	Snap Ring	1
11	080490	Drive Hub	1
11B	0X0516	Drive Hub Bolt	2
11LN	00Y05L	Drive Hub Lock Nut	2
12	080590-07	Clutch Retainer	1
12B	080741	7/16-20 UNF x 1-1/4" Lg. Locking Bolt	1
12LW	00W07L	Retainer Lock Washer	1
13	035084	Electric Clutch	1
14	080590-08	Clutch Spacer	1
15	080486	Pump Frame	1
16	160232	Pump Drain Plug	1
NOT SHOWN			
	002383	Pressure Lubricator	1
	F60-0022-01	Clump Guard	1

**WHEN ORDERING PARTS, BE SURE TO STATE
SERIAL NUMBER OF MACHINE**

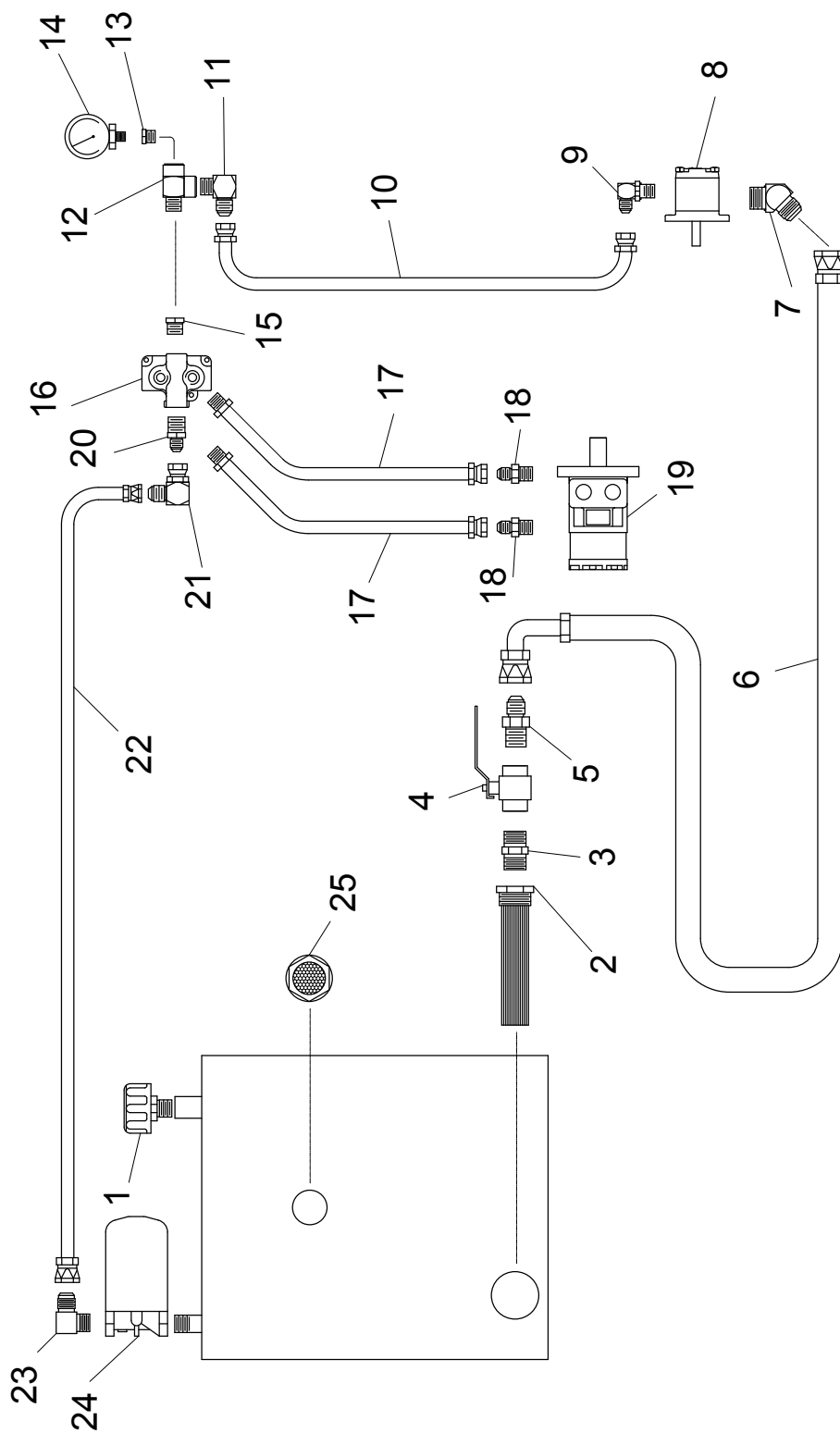


**WHEN ORDERING PARTS, BE SURE TO STATE
SERIAL NUMBER OF MACHINE**

HOSE REEL ASSEMBLY

Ref. No	Part Number	Description	No. Req'd
	085246	Electric Hose Reel Assembly	1
1	RC261700	Inlet Pipe	1
2	RC600947-1	Seal and Rign Assembly	1
3	RCS140-45	Snap Ring	1
4	RC602240	Bearing Housing Sub-Assembly	1
5	RC316248-3.25-35	Sprocket	1
6	RC366406P-64	Chain Assembly	1
7	RC262192	S.J. Spindle	1
8	RCS21-224	O-Ring	1
9	RC261694-2	Gooseneck	1
10	RC390798	RHP Ball Bearing	1
11	RC260583	Electric Motor	1
12	RC390817	Sprocket	1

**WHEN ORDERING PARTS, BE SURE TO STATE
SERIAL NUMBER OF MACHINE**

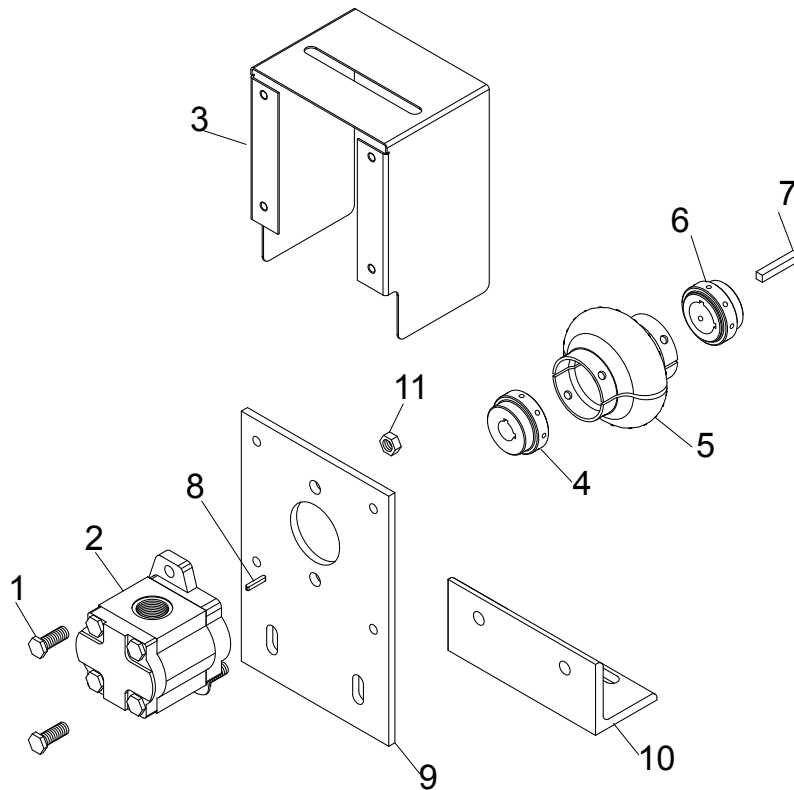


**WHEN ORDERING PARTS, BE SURE TO STATE
SERIAL NUMBER OF MACHINE**

HYDRAULIC SYSTEM

Ref. No.	Part Number	Description	No. Req'd
	85247D	T30 Diesel Hyd. Hose and Fitting Kit	
1	085140	Filler Breather Cap	1
2	004618	Suction Strainer	1
3	023186	Nipple	1
4	020658	Ball Valve	1
5	023616	Straight Male Adapter	1
6	085260	Suction Hose	1
7	085157	45° Male Adapter	1
8	080642	Hydraulic Pump	1
9	055309	Male 90° Adapter Elbow	1
10	085259	Pressure Hose	1
11	FW71451	Male 90° Adapter Elbow	1
12	022592	Street Tee	1
13	055229	Reducer Bushing	1
14	012044	Pressure Gauge	1
15	011656	Reducer Bushing	1
16	022850	4-Way Hydraulic Valve	1
	023120	Seal Kit for Hydraulic Valve	1
17	085227	Hydraulic Motor Hose	2
18	085014	Male Straight Adapter	2
19	080482	Hydraulic Motor	1
20	023617	Straight Male Adapter	1
21	FW71870	90° Union Elbow	1
22	085154	Return Hose	1
23	085013	Male 90° Adapter Elbow	1
24	023913	Hydraulic Oil Return Filter	1
	023914	Filter Element	1
25	080534	Sight Gauge	1

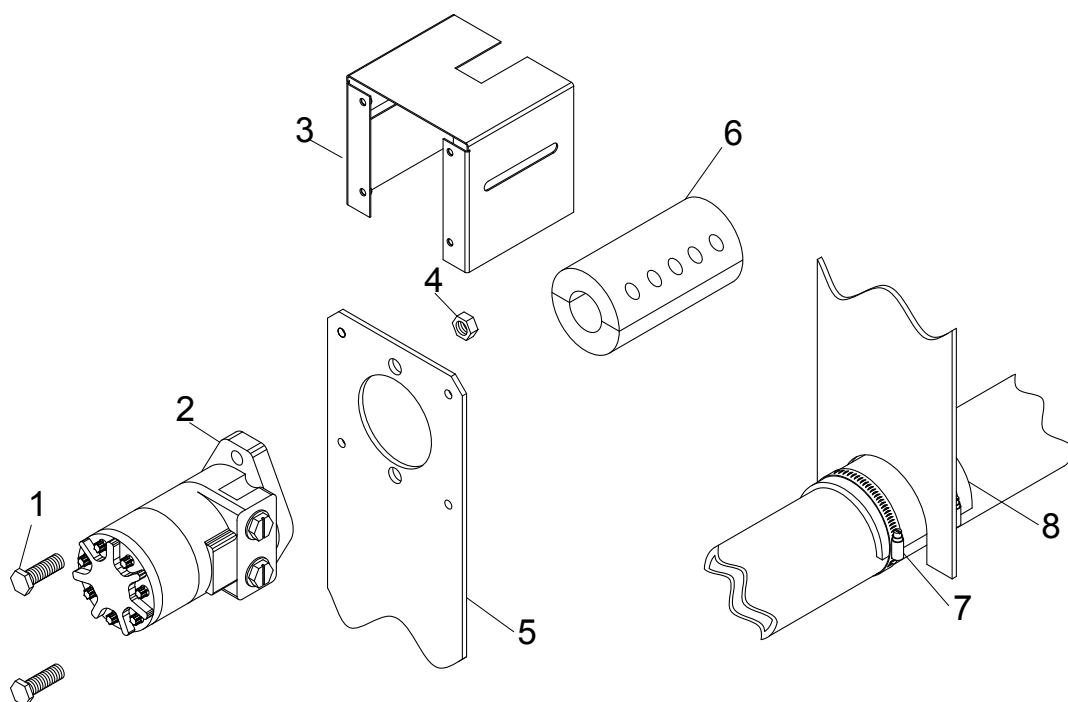
**WHEN ORDERING PARTS, BE SURE TO STATE
SERIAL NUMBER OF MACHINE**



HYDRAULIC PUMP DRIVE ASSEMBLY

Ref. No.	Part Number	Description	No. Req'd
1	0X0616	3/8-16 x 1" Lg. Hex Hd. Bolt	2
2	080642	Hydraulic Pump	1
3	F30-0008	Diesel Hydraulic Pump Coupling Guard	1
4	080807	Coupling Half 5/8" Bore	1
5	080809	Coupling Insert	1
6	080808	Coupling Half 1" Bore	1
7	190123-24	1/4" Sq. Key x 1-1/2" Lg.	1
8	080642-A	Pump Key	1
9	085133	Hydraulic Pump Mounting Plate	1
10	080590-02	Hydraulic Pump Mounting Angle	1
11	00Y06L	3/8" Lock Nut	2

**WHEN ORDERING PARTS, BE SURE TO STATE
SERIAL NUMBER OF MACHINE**



HYDRAULIC AGITATOR DRIVE ASSEMBLY

Ref. No.	Part Number	Description	No. Req'd
1	0X0824	1/2-13 x 1-1/2" Lg. Hex Hd. Cap Screw	2
2	080482	Hydraulic Motor	1
3	F60-0022-02	Agitator Coupling Guard	1
4	00Y08L	1/2-13 Locknut	2
5	085128-01	Torque Arrestor Plate	1
6	080523	2-Piece Rigid Coupling Assembly	1
7	080582	Worm Gear Clamp	2
8	085150	Rubber Torque Arrestor Pad	1

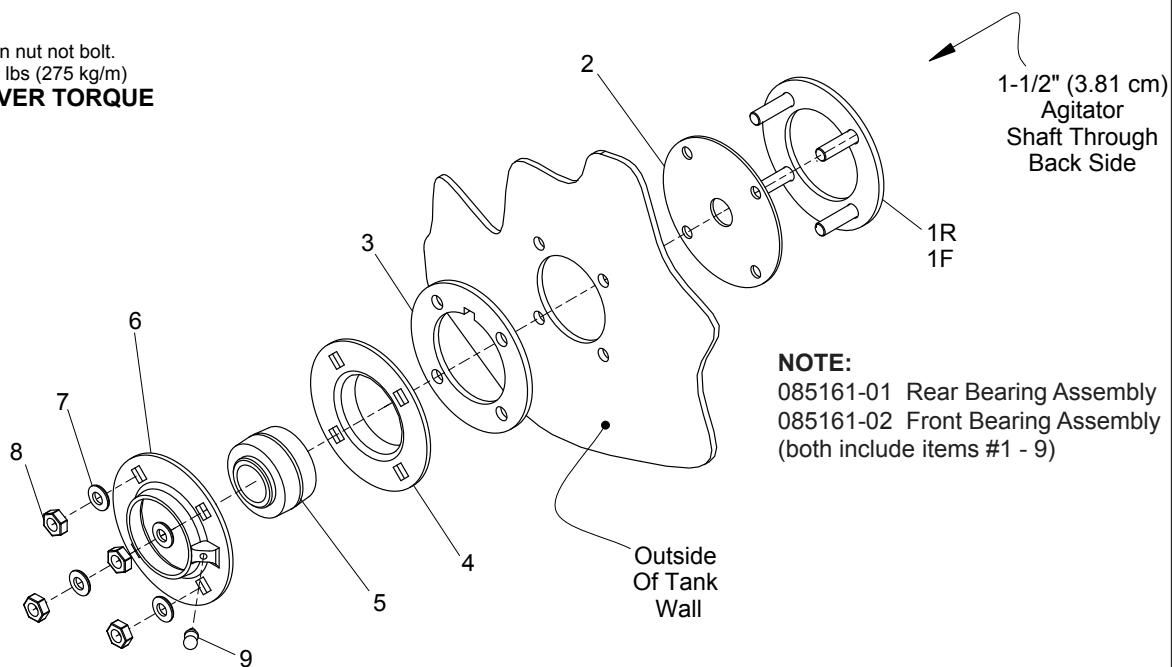
**WHEN ORDERING PARTS, BE SURE TO STATE
SERIAL NUMBER OF MACHINE**

BEARING ASSEMBLY

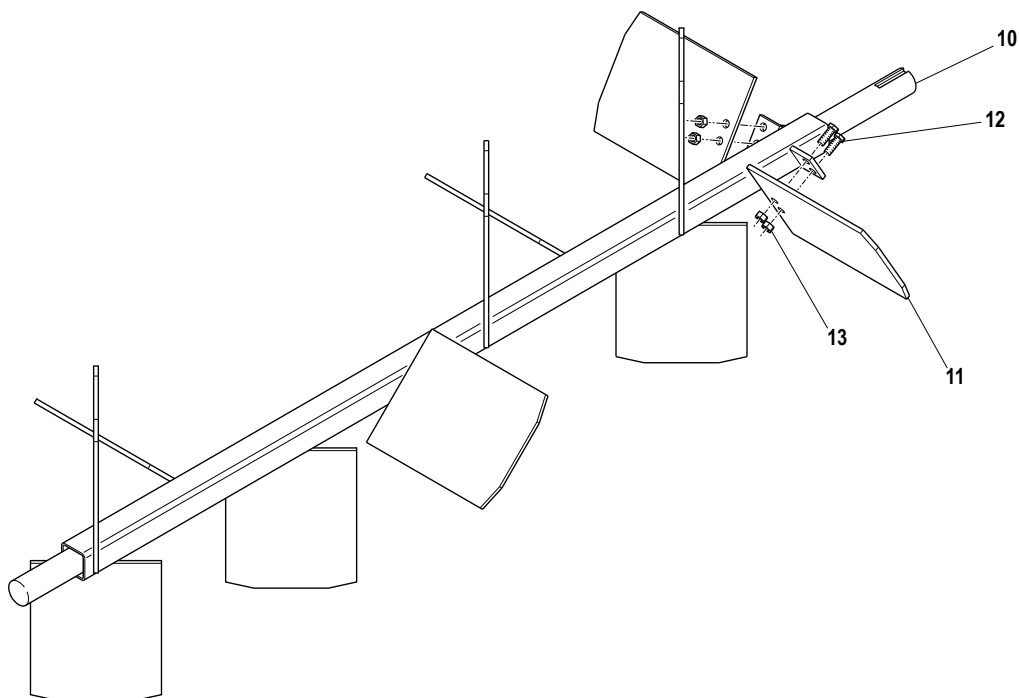
NOTE:

To tighten, Turn nut not bolt.
Torque to 25 ft lbs (275 kg/m)

DO NOT OVER TORQUE



AGITATOR ASSEMBLY



**WHEN ORDERING PARTS, BE SURE TO STATE
SERIAL NUMBER OF MACHINE**

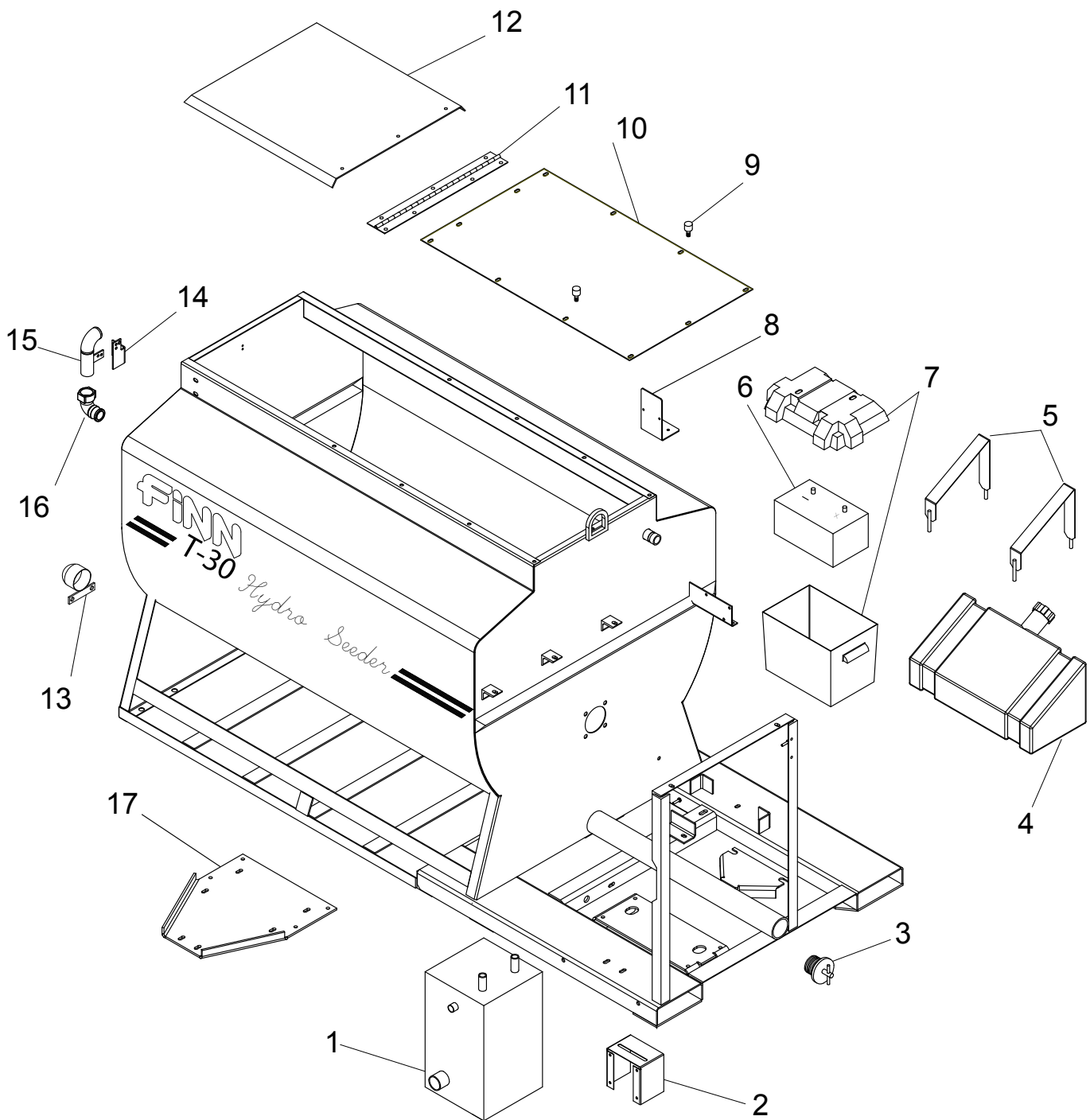
AGITATOR AND BEARING ASSEMBLY

Ref. No.	Part Number	Description	No. Req'd
	085161-01	Rear Bearing Assembly (Includes #1 thru #9)	1
	085161-02	Front Bearing Assembly (Includes #1 thru #9)	1
1R	085162-01	Rear Clamping Ring	1 per
1F	085162-02	Rear Clamping Ring	1 per
2	007416	Shaft Seal	1 per
3	006975	Rubber Flangette Seal	1 per
4	007212	Flangette w/Groove	1 per
5	003022	Bearing	1 per
6	007211	Flangette w/Lube Coupling	1 per
7	012605	Bevel Sealing Washer	4 per
8	0Y08SS	Agitator Nut	4 per
9	007705	Grease Fitting	2

AGITATOR ASSEMBLY

10	085131	T30 Agitator Weldment	1
11	085130-01	Bolt-On Paddle w/Holes	1
12	0X0616	Agitator Paddle Bolt	2 per
13	00Y06L	Agitator Paddle Nut	2 per

**WHEN ORDERING PARTS, BE SURE TO STATE
SERIAL NUMBER OF MACHINE**



**WHEN ORDERING PARTS, BE SURE TO STATE
SERIAL NUMBER OF MACHINE**

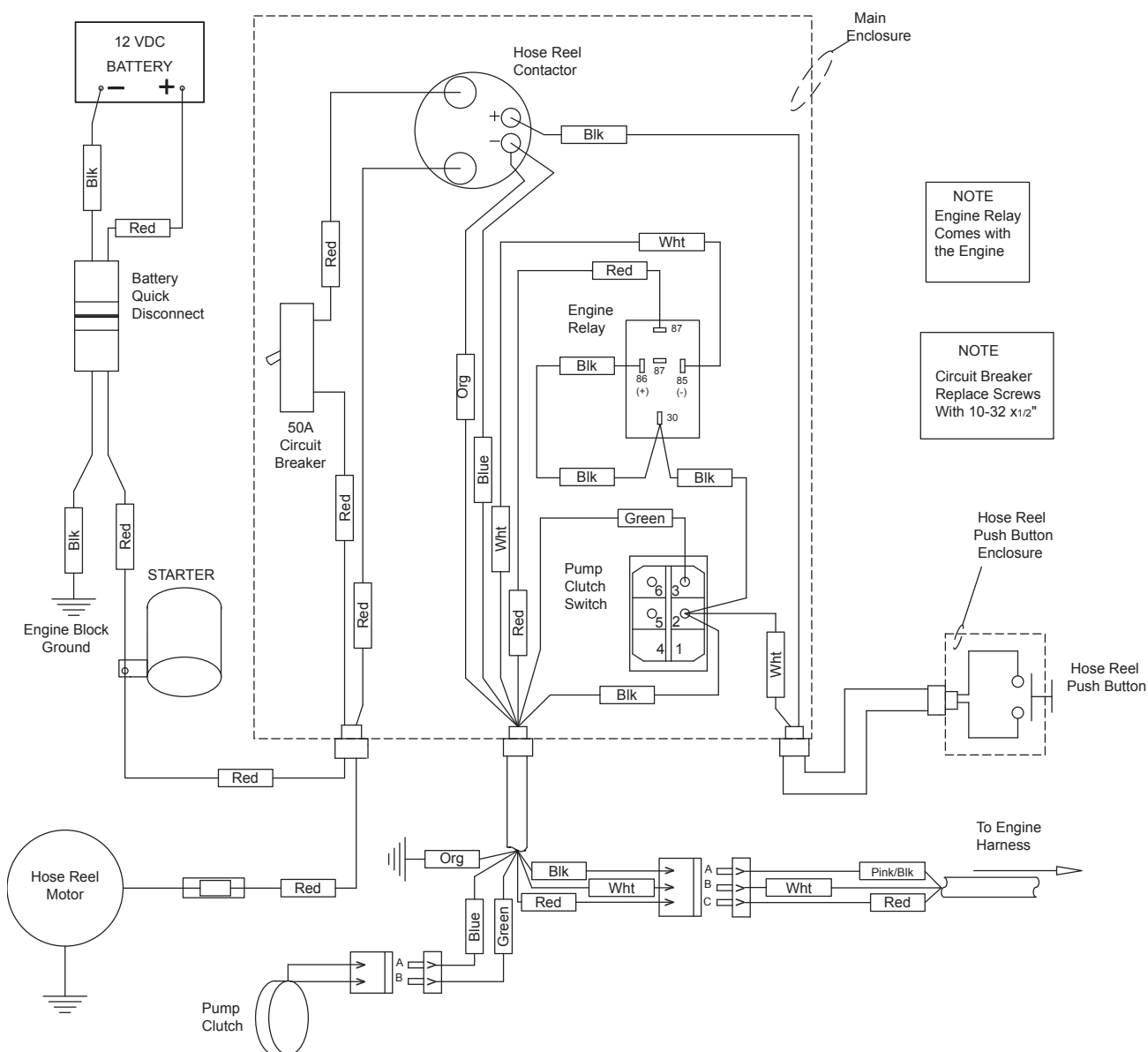
COMMON LOOSE PARTS & ENGINE

Ref. No.	Part Number	Description	No. Req'd
1	085145	Hydraulic Reservoir	1
2	F30-0008	Diesel Hydraulic Pump Coupling Guard	1
3	004593	Drain Plug	1
4	035123	Fuel Tank	1
5	F30-0009	Fuel Tank Strap	1
6	002256-12	Battery	1
7	080223	Battery Case	1
8	F30-0012	Battery Disconnect Mount	1
9	085152	Rubber Stud Mount	2
10	085127	Tank Top	1
11	085132-01	Hatch Lid Hinge	1
12	085126	Hatch Lid	1
	005433	Soft Latch	1
13	005399	Toe Guard	1
14*	F60-0013	Fill Port Bracket	1
15*	080636	Fill Port Weldment	1
16*	080638	90 Deg Polypropylene Elbow	1
17	F30-0007	Engine / Pump Plate	1
NOT SHOWN			
	080115	Throttle Cable	1
	F30-00013	Key Switch Mount	1
	085250	Diesel Engine	1
		Muffler	1
		Air Filter	1
		Oil Filter	1
		Fuel Filter	1

NOTE:

* Denotes Optional Attachment

**WHEN ORDERING PARTS, BE SURE TO STATE
SERIAL NUMBER OF MACHINE**



CONTROL BOX WIRING

Part Number	Description	No. Req'd
SE0318-14	Modified Control Box	1
080754	Pump Clutch Switch	1
080526	Pump Clutch Switch Dust Boot	1
035084	Pump Clutch	1
080753	Hose Reel Contactor	1
080755	50A Circuit Breaker	1
085225	Male Battery Quick Disconnect	1
085226	Female Battery Quick Disconnect	1
002256-12	Battery	1
080779	Hose Reel Push Button Enclosure	1
080757	Hose Reel Push Button	1
080783	Hose Reel Push Button Adapter	1
080784	Hose Reel Push Button Contact Block	1

**WHEN ORDERING PARTS, BE SURE TO STATE
SERIAL NUMBER OF MACHINE**

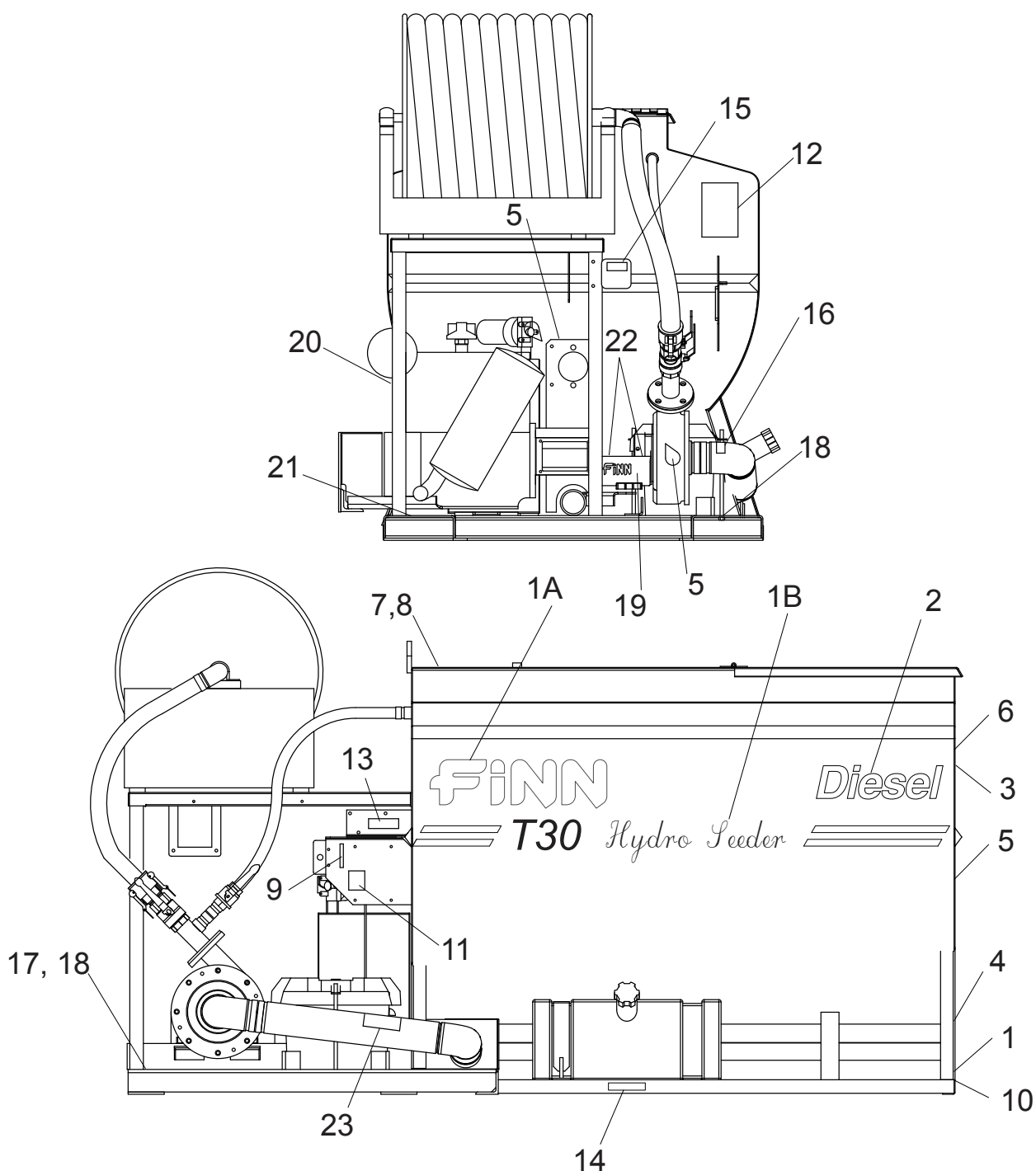
TOOL KIT

Part Number	Description	No. Req'd
000698	Automatic Pressure Lubricator Grease (1 Pound Tub)	1
005220	Impeller Wrench	1
080273	Long Distance Nozzle Assembly	1
080131	Long Distance Nozzle	1
080260	Nyglass Adapter	1
160749	Reducer Bushing	1
080394	Wide Ribbon Nozzle Assembly	1
006605	Wide Ribbon Nozzle	1
080260	Nyglass Adapter	1
160750	Reducer Bushing	1
080395	Narrow Ribbon Nozzle Assembly	1
004805	Narrow Ribbon Nozzle	1
080260	Nyglass Adapter	1
160750	Reducer Bushing	1
004593	Drain Plug	1
006515	Coupler Gasket	1
012681T	Finn Beige Touch-Up Paint	1
012681A	Finn Beige Aerosol Paint	1
080535	Remote Valve Assembly	1
012083	Full Port Ball Valve	1
080260	Male Nyglass Adapter	1
080261	Female Nyglass Coupler	1
160307	Close Nipple	1
	Engine Parts Manual	1
	HydroSeeder® Parts/Operator's Manual	1

SEAL REPAIR KITS

Part Number	Description	No. Req'd
023120	Seal Kit for Hydraulic Valve #022850	
080615	Seal Kit for Hydraulic Motor #080482	
080616	Seal Kit for Hydraulic Pump #080642	

**WHEN ORDERING PARTS, BE SURE TO STATE
SERIAL NUMBER OF MACHINE**



**WHEN ORDERING PARTS, BE SURE TO STATE
SERIAL NUMBER OF MACHINE**

DECALS

Ref. No.	Part Number	Description	No. Req'd
1	011690	FINN Nameplate	1
1A	031235	Decal "FINN"	2
1B	085158	Decal "T30 HydroSeeder"	2
2	085261	Decal "Diesel"	2
3**	080769-01	Decal "Entanglement Hazard..."	1
4*	011662	Decal "U.S. Patent Numbers"	1
5*	007230	Decal "Service Daily"	3
6*	023519	Decal "CAUTION! Wear Eye Protection..."	1
7*	012686	Decal "DANGER! Do Not Enter Tank"	1
8*	085078	Decal "Operating Instructions"	1
9*	080442	Decal "Throttle"	1
10	012260	FINN Maintain Decal Plate	1
11*	085137	Decal "Pump On/Off"	1
12*	013184	Decal "Sound Level Exceeds..."	1
13*	008286-02	Decal "Agitator Speed"	1
14*	023391	Decal "Diesel"	1
15**	012868	Decal "Hose Reel Rewind"	1
16*	012180	Decal "To Avoid Damage To Suction Cover"	1
17*	011567	Decal "DANGER! Do Not Aim..."	1
18*	031463	Decal "WARNING! Do Not Operate..."	2
19*	006869	Decal "Pressure Lubricator"	1
20*	012278	Decal "DANGER! Hot Exhaust"	1
21*	012687	Decal "Hydraulic Instructions"	1
22*	007231	Decal "Service Weekly"	2
23*	005216	Decal "WARNING! Open Recirculation"	1

Note: Items marked by a single asterisk (*) are part of decal kit # 080699.
 Items marked by a double asterisk (**) are part of decal kit # 080769.
 These decals must be ordered by their kit numbers and cannot be ordered separately.

**WHEN ORDERING PARTS, BE SURE TO STATE
 SERIAL NUMBER OF MACHINE**