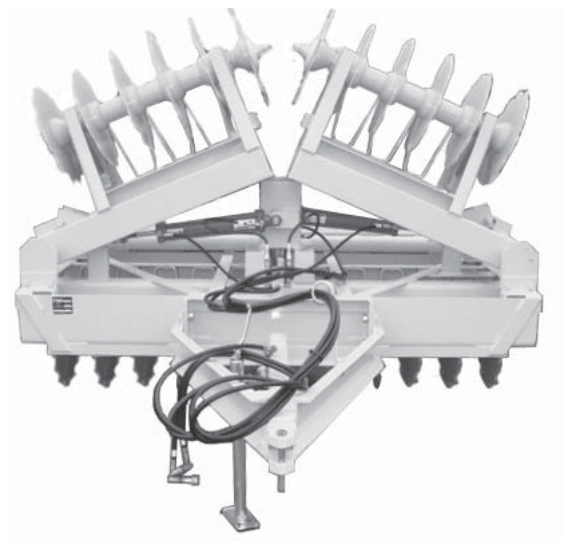
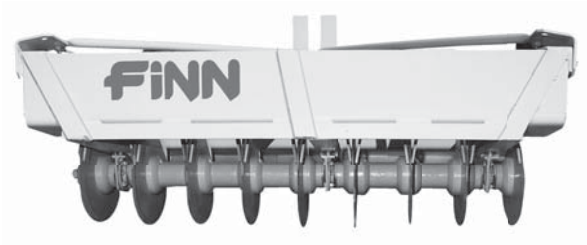


# FINN<sup>®</sup>

## CORPORATION

9281 LeSaint Drive • Fairfield, Ohio 45014  
Phone (513) 874-2818 • Fax (513) 874-2914

Sales: 1-800-543-7166



## KRIMPER

### Operator Instructions and Parts Manual

Model KR-6

Model KR-8 Serial No. RD

Model KR-16H

**FOR OFFICE USE ONLY**

<b>DATE</b>	<b>UPDATE DESCRIPTION</b>	<b>CODE</b>
01/01/18	Initial release	MB0101



## **ACTIVATE YOUR FINN EQUIPMENT WARRANTY**

☞ It is the responsibility of the Finn Dealer to register your Finn Equipment shortly after the equipment start-up and operation overview at which time you will be asked to sign off on the **WARRANTY VALIDATION FORM**.

Be sure to confirm with your sales representative that this has been done.

This registration process activates the Finn Limited Warranty.

### **What should you do if you need repairs or parts under Warranty?**

#### ***How to get parts and or repairs done under warranty:***

Notify **YOUR DEALER** immediately when you discover a faulty material, workmanship, or faulty component. **Do not** wait weeks or months to get it reported. Be sure to tell the dealer that this is a failure that occurred under warranty.

**NOTE:** Warranty work must be done by a Finn Authorized Dealer in order to be covered by the Finn Warranty Program, unless otherwise approved by the Finn Warranty Administrator.

#### ***Instructions to Dealer on processing warranty work:***

##### **Initiating a claim**

1. Be sure to have the model, serial number and number of hours on unit.
2. A description of the problem as understood at the time.
3. Call Finn's Warranty Administrator to secure warranty claim authorization number.
4. Confirm with Warranty Administrator that the unit is eligible for warranty coverage.
5. Any parts needed for the repair work should be placed with the Warranty Administrator instead of the parts department. These will be shipped to you at no charge pending the outcome of the investigation.
6. Labor hours must coincide with the published "Labor Schedule" or estimate approved by the Finn Warranty Administrator.
7. Once work is done, a Finn Warranty Claim Form must be filled out and emailed along with any related receipts or invoices to the Warranty Administrator. We ask that this is done ASAP after work is completed.

#### ***Faulty or failed parts:***

**IF** Finn wants you to return failed parts, you will receive a return shipping label in the package with new parts. On that Label will be marked a return authorization number. (Which is the same number as you claim number.)

Please also mark the outside of the package that you are shipping back (using a marker) with the claim/return number. **THESE PARTS MUST BE RETURNED WITHIN 10 DAYS!** Failure to do so can void warranty coverage.

**NOTE:** Further information and related forms can be found on the Finn Web site in the Dealer Portal warranty section.



#### WARRANTY PERIOD

12 Months from Date of Purchase or  
1200 hours whichever comes first.

**COMMERCIAL LIMITED WARRANTY**  
EFFECTIVE 01/01/2018

#### OUR WARRANTY TO YOU

Finn Corporation warrants to you, the original purchaser, for use (or rental to others for use) and to a second owner who purchases a used machine from an Authorized Dealer Rental Program (the remaining warranty), all new construction machinery, parts and attachments (except those referred to herein) that are manufactured by Finn to be free from defects in material and workmanship for a period noted above. Replacement parts provided under the terms of this warranty are warranted for the remainder of the warranty period applicable to the product to which parts are installed, as if parts were original components of the product.

#### TO QUALIFY FOR WARRANTY CONSIDERATION

- A. Your Finn Dealer will register your equipment with Finn.  
**FAILURE TO REGISTER WILL VOID THE WARRANTY.**
- B. Notify your dealer same day or next day of any need for work under warranty.
- C. Warranty work must be done by an authorized Finn dealer or service provider of Finn's choice and any parts must be ordered through the Finn warranty administrator.

#### WHAT FINN WILL DO

Upon notification to Finn concerning a failure of material or workmanship in accordance with the above stated Warranty, Finn Corporation will:

- A. Verify claim falls within the valid warranty time frame.
- B. Verify the product and equipment has been registered with Finn.
- C. Upon affirmation of warranty period and registration, Finn will provide new or repaired replacement part(s), whichever Finn elects and a return shipping label for returning failed parts if applicable.
- D. Evaluate the part when defective part is returned. If damage to a part is determined not to be covered under the warranty, the customer will be billed.
- E. Reconcile costs with customer for parts and shipping, as determined by our inspection of failed parts, and confirmation of warranty coverage, per the terms of this warranty.
- F. Correction of nonconformities, in the manner provided above, shall constitute fulfillment of all liabilities of Finn Corporation.

#### WHAT THE WARRANTY DOES NOT COVER

1. Normal wear parts, Allied Equipment, trade accessories not manufactured by Finn, such as but not limited to items such as various filters, fluids, brakes, clutch linings, coupler insert, belts, hoses, light bulbs, mechanical seal, over center clutches, tires, ignitions, starters, batteries, carburetors, engines or like or unlike equipment or accessories. (Such being subject to the warranty, if any, by their respective manufacture).
2. Secondhand, used, altered, or rebuilt machines or parts.
3. Defects, malfunctions or failures resulting from accidents, abuse, misuse, improper servicing, or neglect of required operational guidelines and maintenance service, as outlined in the Finn Corporation's Operators Manual(s).
4. Any defect or failure of products warranted arises out of or is caused by accessories or parts not manufactured or supplied by Finn Corporation, whether same are supplied by purchaser, dealers, or any other party.

#### STORAGE

Dealers and customers are responsible to follow all guidelines related to Seasonal and Long Term Storage of Equipment, as advised in operation and equipment manuals. i.e. Finn, Engine, Clutch, Pump, Motor, etc. Equipment failures caused by neglect of these guidelines are not warrantable.

#### THIS IS THE ONLY EXPRESS WARRANTY ON OUR PRODUCTS

We neither assume nor authorize anyone to assume for us any other express warranty. The Distributor/Dealer has no authority to make any representation or promise on behalf of Finn Corporation or to modify the terms or limitations of this warranty in any way.

THIS WARRANTY THEREFORE SHALL BE IN LIEU OF ALL OTHER WARRANTIES, EXPRESS OR IMPLIED, INCLUDING, BUT NOT LIMITED TO, ANY IMPLIED WARRANTY OF MERCHANTABILITY OR FITNESS FOR A PARTICULAR PURPOSE.

#### LIMITATIONS ON OUR RESPONSIBILITY WITH RESPECT TO PRODUCTS PURCHASED

THE REMEDIES OF THE USER SET FORTH HEREIN ARE EXCLUSIVE, WITHOUT REGARD TO WHETHER ANY DEFECT WAS DISCOVERABLE OR LATENT AT THE TIME OF DELIVERY OF THE PRODUCT TO THE PURCHASER.

ALL WARRANTY REPAIR MUST BE DONE BY A FINN AUTHORIZED SERVICE PROVIDER OR AUTHORIZED REPAIR SHOP OF FINN'S CHOICE.

TRANSPORTATION, HAULING, STORAGE, OR OTHER SIMILAR COSTS ARE NOT PART OF FINN'S OBLIGATION UNDER THE LIMITED WARRANTIES AND IS THE RESPONSIBILITY OF THE EQUIPMENT OWNER.

THE ESSENTIAL PURPOSE of this exclusive remedy shall be to provide the original purchaser with repair or replacement of parts that prove to be defective within the period and under the conditions previously set forth. This exclusive remedy shall not have failed of its essential purpose (as that term is used in the Uniform Commercial Code) provided Finn remains willing to repair or replace defective parts within a commercially reasonable time after it obtains actual knowledge of the existence of a particular defect.

IN NO EVENT shall Finn be liable for any special, consequential, incidental or indirect damages, including lost profits or lost commercial opportunities, with respect to the sale of the above warranted product or anything done in connection therewith, or for property damage sustained by a person claiming to be a third party beneficiary of a surviving warranty under the law of any jurisdiction.

#### NOTICE

FINN CORPORATION URGES the use of only Finn corporation supplied parts and attachments to assure proper performance and safe operation of Finn corporation equipment. Insist on parts and attachments manufactured or supplied by Finn corporation when you purchase, repair or replace your Finn equipment and attachments. Finn corporation cannot assure that parts and attachments not manufactured or supplied by Finn meet Finn corporation's quality standards, specifications, or operating requirements. Our warranty is not effective to the extent any failure of or defect in a Finn corporation product arises from or is caused by parts, attachments or components not originating with Finn corporation. Use of Finn corporation equipment with parts and attachments not manufactured or supplied by Finn could result in personal injury and void warranty coverage.

# INDEX

---

<b>Safety First</b> .....	1
<b>Safety Summary Section</b> .....	2 - 5
<b>Operation and Maintenance Manual of the Finn Krimper</b> .....	6
Towing Vehicle .....	6
<b>Finn Krimper - 6 Foot and 8 Foot Models</b> .....	7 - 12
Assembly of the Finn Krimper .....	7
Coulter Blade and Axle Assembly .....	8
3-Point Hitch Assembly .....	9 - 10
Tow Hitch Assembly .....	11
Towing Axle Assembly .....	12
<b>Finn Krimper - 16 Foot Model</b> .....	13 - 18
Assembly of the Finn Krimper .....	13
Coulter Blade and Axle Assembly .....	14
Side Gang Assembly .....	15
Tow Hitch Assembly .....	16
Towing Axle Assembly .....	17
Hydraulic Parts .....	18
<b>Maintenance</b> .....	19

# SAFETY FIRST

With any piece of equipment, new or used, the most important part of its operation is **SAFETY!**

FINN Corporation encourages you and your employees to familiarize yourselves with your new equipment and stresses safe operation.

The first five pages of this manual are a summary of the main safety aspects associated with this unit. Be sure to read and understand completely before operating the machine.

**The symbols below are used throughout the operation and maintenance sections of this manual to call attention to safety procedures.**

**⚠ DANGER** *Danger indicates an imminently hazardous situation which, if not avoided, WILL result in death or serious injury.*

**⚠ WARNING** *Warning indicates a potentially hazardous situation which, if not avoided, COULD result in death or serious injury.*

**⚠ CAUTION** *Caution indicates a potentially hazardous situation which, if not avoided, MAY result in minor or moderate injury.*

**NOTICE** *Notice indicates important information, that if not followed, MAY cause damage to equipment.*

**NOTE:** This is helpful information.

## CALIFORNIA PROPOSITION 65

**⚠ WARNING** *Engine exhaust and some of its constituents are known to the State of California to cause cancer, birth defects, and other reproductive harm. Wear protective equipment.*



**⚠ WARNING** *Battery posts, terminals, and related accessories contain lead and lead compounds, chemicals known to the State of California to cause cancer and reproductive harm. Wash hands after handling.*

# SAFETY SUMMARY SECTION

It is important that operators of this machine are familiar with all safety aspects covered in this section and have read the entire Operator's Manual before operating the machine. Always keep a copy of this manual with the machine. It is the responsibility of the operator of the machine to fully understand this safety summary section. Remember that YOU are the key to safety. Good safety practices protect not only you, but also the people working with and around you. Keep in mind that this safety section is written for this type of machine only. Practice all other usual and customary safe working precautions. Above all, remember that safety is up to you.



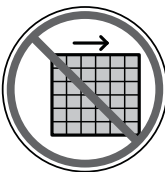
## I. PRE-START EQUIPMENT CHECK (equipment check is to be made with the towing vehicle's engine off)

1. Check the devices securing the Krimper to the carrier vehicle frame.
2. Check the hitch and hitch bolts and all safety components.
3. Check that all guard railing and machine guarding is in place and secure.
4. Remove unnecessary objects (or materials) from the tank top.
5. Inspect all hydraulic hoses for cracks, bulges, or damage. If hoses are bad, replace immediately.
6. Inspect all discharge hoses for cracks, bulges, or damage. If hoses are bad, replace immediately.



## II. MACHINE OPERATION

1. Always wear safety goggles when operating the machine. Other safety attire such as safety shoes, ear protection, gloves, hard hats, dust masks, etc. should be worn as required by the warning decals on the machine, operator's manuals, or job site requirements. Remove rings, watches, etc. Avoid wearing loose-fitting clothing that could get caught in the rotating machinery.
2. Do not operate the machine without all guards in place.
3. The driver of the carrying or towing vehicle is responsible for the safety of the operator(s) of the machine. Make sure the driver is aware of and avoids all possible hazards to the operator(s) of the machine, such as low tree limbs, low power lines, etc. Vehicles on which equipment is mounted or towed must be stopped and started gradually. Avoid abrupt starts or stops.



## II. MACHINE OPERATION (Continued)

4. Operator(s) of equipment should never ride on the machine.
5. Never operate the machine in an enclosed area without venting the engine exhaust of both the equipment and vehicle on which the equipment is mounted. Deadly carbon monoxide fumes can accumulate.
6. Never operate this or any other machinery when fatigued, tired, under the influence of alcohol, illegal drugs, or medication. You must be in good physical condition and mentally alert to operate this machine.
7. Never modify or remove any part of the machine (except for service and then reinstall all removed parts before operating).
8. Use proper means (steps, ladder) for mounting and dismounting of the machine. Never mount or dismount a moving machine.





# SAFETY SUMMARY SECTION (CONTINUED)

## III. MAINTENANCE

1. Before servicing the machine, allow all moving parts to stop. To prevent accidental starting, disconnect battery cables. Tag the engine operating area to show that the machine is being serviced. Use lockout/tagout procedure (Occupational Health and Safety Administration (OSHA) 29 CFR 1910.147).
2. Perform general maintenance such as checking the safety chains, hitch and hitch bolts, and tires. Repair or replace if worn or broken. Never operate machine on improperly inflated or damaged tires. Always use a safety cage or cable restraints when inflating a repaired tire.
3. It is recommended that only authorized, genuine FINN replacement parts be used on the machine.
4. Make certain that all decals on the machine are maintained in good legible condition. Replacement decals are available through FINN Corporation. See Current Set of Safety Decals section for the current safety decals mounted on the unit. See the Parts Section of this manual for the location and quantity of all decals on this unit.

## III. MAINTENANCE (Continued)

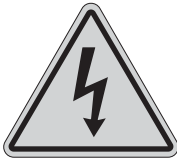
5. Hydraulic fluid under pressure can penetrate the skin or eyes and cause injury, blindness, or death. Pressure may build up in the hydraulic system; use caution when removing the cap. 
6. Do not pressure wash this unit. Do not pressure wash around any control boxes, radio remotes or control panels. Pressure washing this unit can cause damage to the electrical systems and components and also cause the unit to not function. Pressure washing injects water into sensitive electrical components. To clean the unit, use a method that controls the amount of water that is applied to surface of the unit. 



# COMMON SAFETY SYMBOLS



Hazard/  
Attention



Electrical Shock  
Hazard



Hearing Hazard



Arc Flash  
Hazard or  
Explosion  
Hazard



Electrocution  
Hazard



Fire Hazard



Body  
Entanglement  
Hazard



Electrostatic  
Discharge  
Hazard



Fumes/Dust  
Hazard



Burn Hazard



Electrostatic  
Sensitive Area  
Hazard



Pinch Point/  
Entanglement  
Hazard



Carbon Dioxide  
Hazard



Explosive or  
High Pressure  
Hazard



Grounding  
Required  
Hazard



Corrosive  
Hazard



Explosive  
Material Hazard



Crush Hazard



Cut/Crush  
Hazard



Vision Damage  
Hazard



Crush/Pinch-  
point Hazard



Cut/Sever  
Hazard



Vision and  
Hearing  
Damage  
Hazard



Crush/  
Entrapment  
Hazard



Sever/Reach  
Hazard



Vision, Hearing  
and Respiratory  
Damage  
Hazard



High Voltage  
Hazard



Heavy Object  
Hazard



Hot Surface  
Hazard



Loose Clothing  
Entanglement  
Hazard

# COMMON SAFETY SYMBOLS



Pinch Point/  
Moving Belt  
Hazard



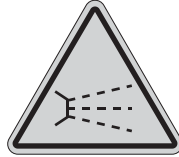
Skin Puncture  
Hazard



Sever by  
Rotating Parts  
Hazard



Poison  
Hazard



Splash/Spray  
Hazard



Rotating Shaft  
Hazard



Radio  
Frequency  
Hazard



Stumble Hazard



Fall/Loss of  
Balance Hazard



Remote Start  
Hazard



Trip Hazard



Watch Head/  
Overhead  
Hazard



Mandatory  
Operator Action  
Required



Read Manual



Lockout/Tagout  
Procedure  
Required



Vision  
Protection  
Required



Hearing  
Protection  
Required



Breathing  
Protection  
Required



Vision, Hearing  
and Head  
Protection  
Required



Breathing,  
Vision, Hearing  
and Head  
Protection  
Required



Lift Point



Gloves  
Required



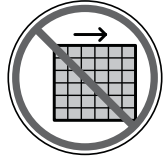
Foot  
Protection  
Required



Trailer Safety



Do Not Ride on  
Moving Vehicle



Do Not Remove  
Guards



Do Not Obstruct  
or Block



Do Not Spray  
Power Lines



Do Not Touch



Do Not  
Pressure Wash

# OPERATION AND MAINTENANCE MANUAL FOR THE FINN KRIMPER

This manual gives you instructions for the operation and maintenance of the FINN Krimper. For best results and to ensure longer life of the equipment, please follow the instructions carefully. For your safety, read the entire manual before operating this unit.

## OPERATION OF THE FINN KRIMPER

The Finn Krimper is to be drawn with a tractor over the mulched bed, incorporating some of the mulch fibers into the soil.

The tractor should preferably be equipped with dual rear wheels or flotation tires to minimize packing of the seed bed.

Sufficient depth is essential and this can be accomplished by partial or total loading of the ballast boxes on the Krimper with dirt, rocks, concrete blocks, or permanently filling with concrete.

The type of soil and compactness of the seed bed are the determining factors for the amount of weight. The most desirable depth ranges from 1 inch in clay to 2 inches in sandy soils.

The direction of travel will usually be determined by the shape of the seed bed and the topography, however, when possible one should krimp in a direction 90 degrees to the prevailing winds.

**⚠ WARNING** *On slopes, the most stabilizing effect will be achieved by krimping in a horizontal direction, (much like a farmer "contouring" his hilly farm) rather than up and down the slope.*

## TOWING VEHICLE

The Krimper is to be pulled by a vehicle that is built to handle the weight of the unit. Any auxiliary loads due to material storage or optional equipment must be considered to determine vehicle compatibility.

Once the proper towing vehicle has been selected, the Krimper must be securely mounted to it.

# ASSEMBLY OF THE FINN KRIMPER (6 FOOT AND 8 FOOT MODELS)

Assembly of the Krimper begins with the Coulter Blade and Axle Assembly.

Slide the parts listed below onto the Coulter Axle, pushing them towards the end with the welded stop collar in the following sequence:

## 6 Foot Model

- Washer with square hole (ref. #2)
- Spring Washer (ref. #3)
- Coulter Blade (ref. #4)
- Bearing and Spacer Assembly (ref. #5 - 12)
- Coulter Blade (ref. #4)
- Spacer Spool (ref. #13)
- Coulter Blade (ref. #4)
- Spacer Spool (ref. #13)
- Coulter Blade (ref. #4)
- Bearing and Spacer Assembly (ref. #5 - 12)
- Coulter Blade (ref. #4)
- Spacer Spool (ref. #13)
- Coulter Blade (ref. #4)
- Spacer Spool (ref. #13)
- Coulter Blade (ref. #4)
- Spacer Spool (ref. #13)
- Coulter Blade (ref. #4)
- Bearing and Spacer Assembly (ref. #5 - 12)
- Coulter Blade (ref. #4)
- Spring Washer (ref. #3)
- Axle End Spacer ( ref. #14)
- Square Locknut (ref. #15)
- Square Locknut (ref. #15)

## 8 Foot Model (for each axle)

- Washer with square hole (ref. #2)
- Spring Washer (ref. #3)
- Coulter Blade (ref. #4)
- Bearing and Spacer Assembly (ref. #5 - 12)
- Coulter Blade (ref. #4)
- Spacer Spool (ref. #13)
- Coulter Blade (ref. #4)
- Spacer Spool (ref. #13)
- Coulter Blade (ref. #4)
- Spacer Spool (ref. #13)
- Coulter Blade (ref. #4)
- Spacer Spool (ref. #13)
- Coulter Blade (ref. #4)
- Bearing and Spacer Assembly (ref. #5 - 12)
- Coulter Blade (ref. #4)
- Spring Washer (ref. #3)
- Axle End Spacer ( ref. #14)
- Square Locknut (ref. #15)
- Square Locknut (ref. #15)

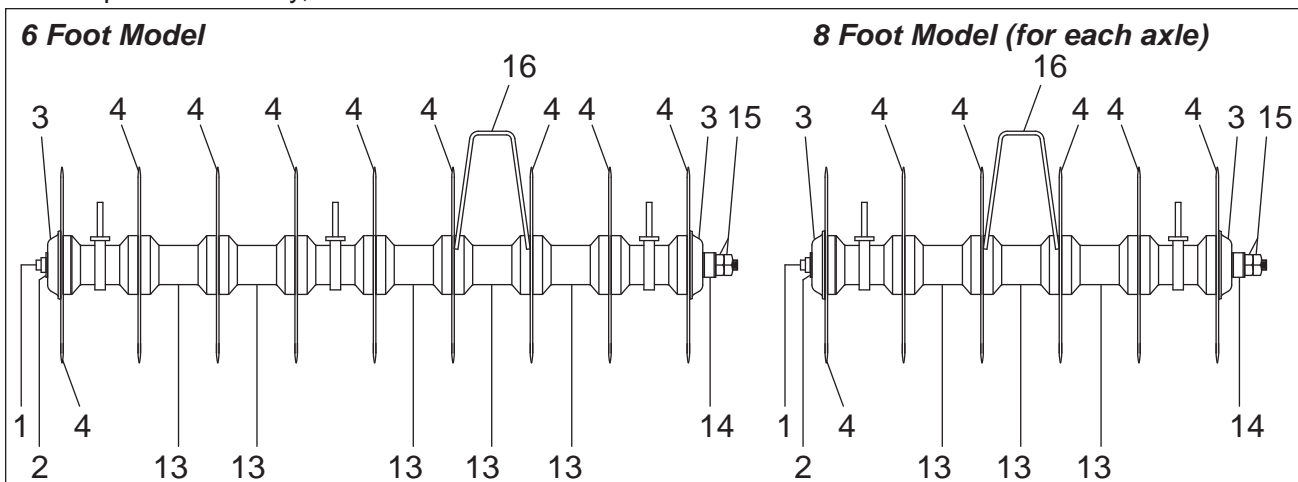
After assembly, tighten the first square nut hand tight.

Leave the Coulter Blade and Axle Assembly lying on the ground, with the threaded studs of the Bearing Mounts facing up, so they can accept the Frame. Place the Frame on top of the Coulter Blade and Axle Assembly and secure it to the Bearing Mounts with the 5/8 in. Locknuts and Washers.

Tighten the first Square Nut on the Axle to 500 FC./LBS. torque; install the second square nut as a jam nut.

Assemble the Blade Scrapers to the Frame with the 1/2 in. Bolts, Washers and Locknuts.

To complete assembly, install either the 3-Point Hitch or the Tow Hitch and Tow Axle.



# COULTER BLADE AND AXLE ASSEMBLY (6 FOOT AND 8 FOOT)

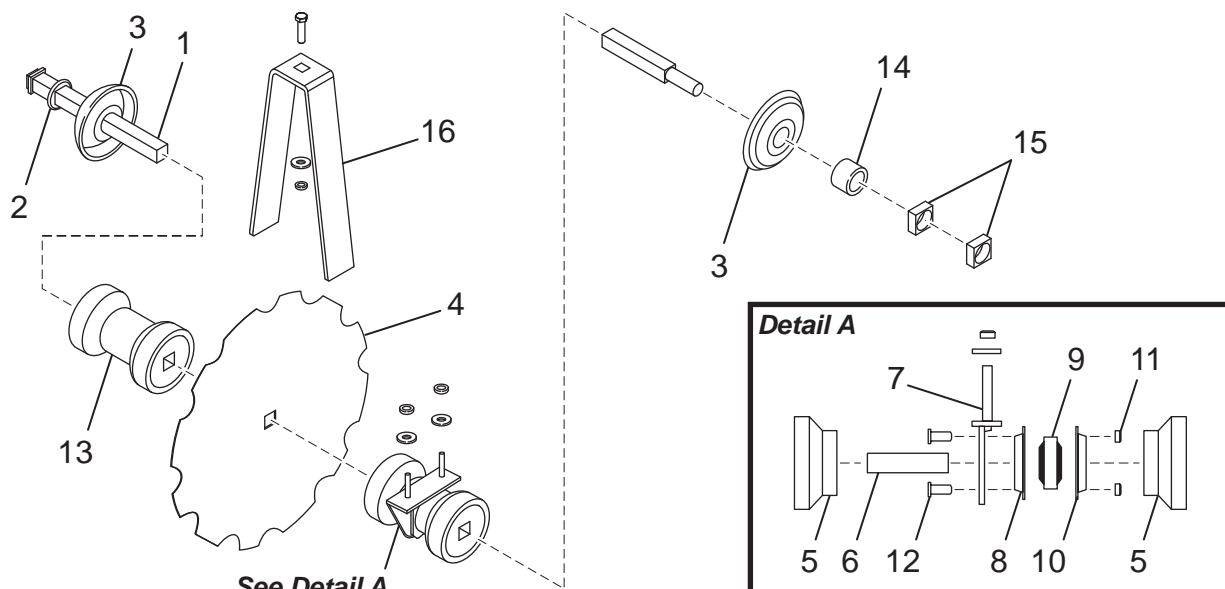
Ref. No.	Kit Ref.	Part Number	Description	Quantity	
				6 ft. Model	8 ft. Model
1	▲	050269-04	Axle, 6 ft.	1	--
	■	050269-05	Axle, 8 ft.	--	2
2	▲■	050215	Washer with Square Hole	1	2
3	▲■	050205	Spring Washer	2	4
4	▲■	050053	Coulter Blade	9	12
5	◇▲■	050263	Bearing Spacer	6	8
6	◇▲■	050269-03	Bearing Spacer Tube	3	4
7	◆◇▲■	050264	Bearing Mount with Washer and Locknut	3	4
8	◆◇▲■	050267	Flangette	3	4
9	◆◇▲■	050265	Bearing	3	4
10	◆◇▲■	050266	Flangette with Lube Fitting	3	4
11	◆◇▲■	Y08L	Locknut	12	16
12	◆◇▲■	X0820	Bolt	12	16
13	◆◇▲■	050043	Blade Spacer Spool	5	6
14	◆◇▲■	050214	Axle End Spacer	1	2
15	◆◇▲■	Y16S	Square Locknut	2	4
16		050203	Blade Scraper with Bolt, Washer and Locknut	8	11

## NOT SHOWN

		050227	Frame Assembly, 6 ft. Model	1	--
		050255	Frame assembly, 8 ft. Model	--	1

## KITS AND MARKERS

◆	050262	Bearing Assembly	3	4
◇	050268	Bearing and Spacer Assembly	3	4
▲	050249-A	Coulter Blade and Axle Assembly, 6 ft.		
■	050250-A	Coulter Blade and Axle Assembly, 8 ft.		



### 3-POINT HITCH ASSEMBLY (6 FOOT AND 8 FOOT MODELS)

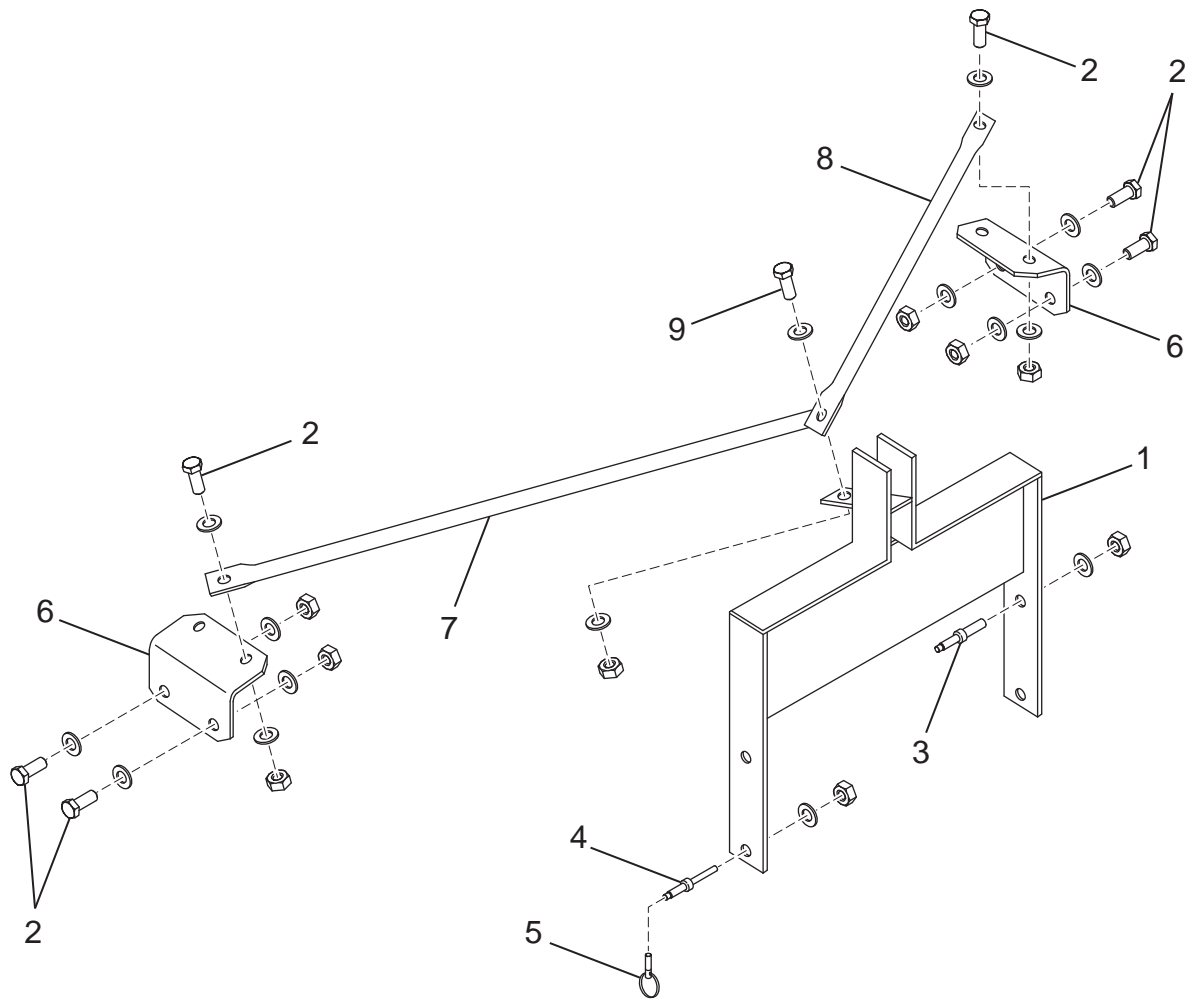
Align the Yoke Assembly with the holes on the front of the frame.

Place the 7/8 in. diameter Draw Pins in the **UPPER** set of holes with the pins facing inside of the Yoke Assembly. Use these pins when using a tractor equipped with a Category 1 hitch.

Place the 1-1/8 in. diameter Draw Pins in the **LOWER** set of holes with the pins facing outside of the Yoke Assembly. Use these pins when using a tractor equipped with a Category 2 hitch.

Assemble the Angle Brackets to the holes on both sides of the frame.

Connect the Support Tubes from the Yoke Assembly to the Angle Brackets.



### 3-POINT HITCH ASSEMBLY (6 FOOT AND 8 FOOT MODELS)

Ref. No.	Kit Ref.	6 ft. Model Part Number	8 ft. Model Part Number	Description	Quantity
1	▲	050257	050257	Yoke Assembly	1
2	▲	X1228	X1228	3/4 - 10 x 1-3/4 in. Hex Bolt	6
	▲	Y12L	Y12L	3/4 - 10 Lock Nut	6
	▲	W12F	W12F	3/4 in. Flatwasher	4
3	▲	031045	031045	Category I Draw Pin (7/8 in. Diameter)	2
4	▲	050252	050252	Category II Draw Pin (1-1/8 in. Diameter)	2
5	▲	050086	050086	Snap Ring Pin	2
6	▲	050243-2	050243-2	Angle Bracket	2
7	▲	050241-1	050241-2	Support Tube, Left Hand	1
8	▲	050241-3	050241-4	Support Tube, Right Hand	1
9	▲	X1232	X1232	3/4 - 10 x 2 in. Hex Bolt	1
		Y12L	Y12L	3/4 - 10 Lock Nut	1
		W12F	W12F	3/4 in. Flatwasher	2
<b>KITS AND MARKERS</b>					
	▲	050224	050223	3-point Hitch Assembly	

## TOW HITCH ASSEMBLY (6 FOOT AND 8 FOOT MODELS)

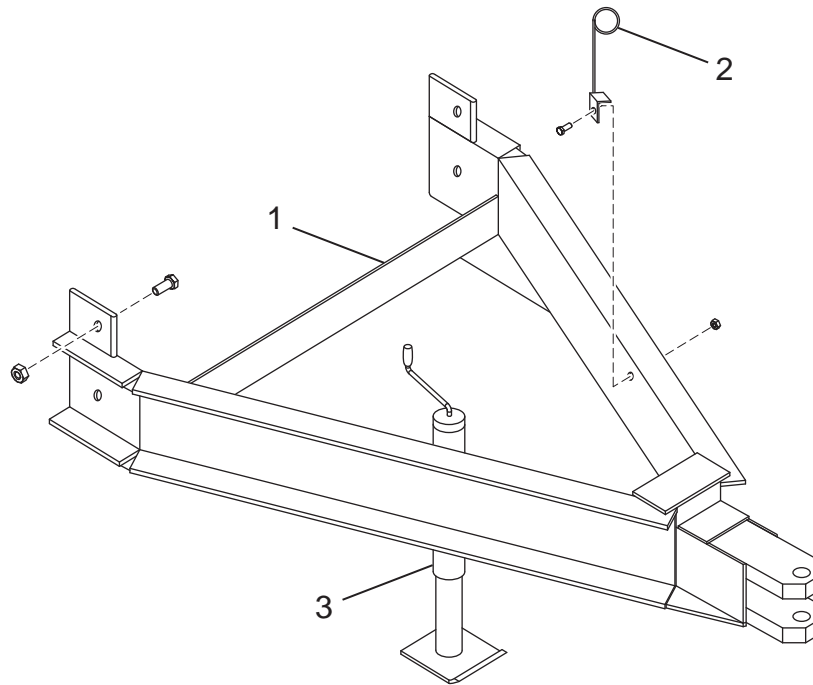
Attach the Tow Hitch Assembly to the front of the frame.

Slide the Torsion Bar Bearings onto the ends of the Torsion Bar/Spindle Assembly.

Lay the Torsion Bar Assembly over the top of the assembled Krimper and attach it to the frame.

Connect the rod end of the Hydraulic Cylinder to the crank arm on the Torsion Bar/Spindle Assembly.

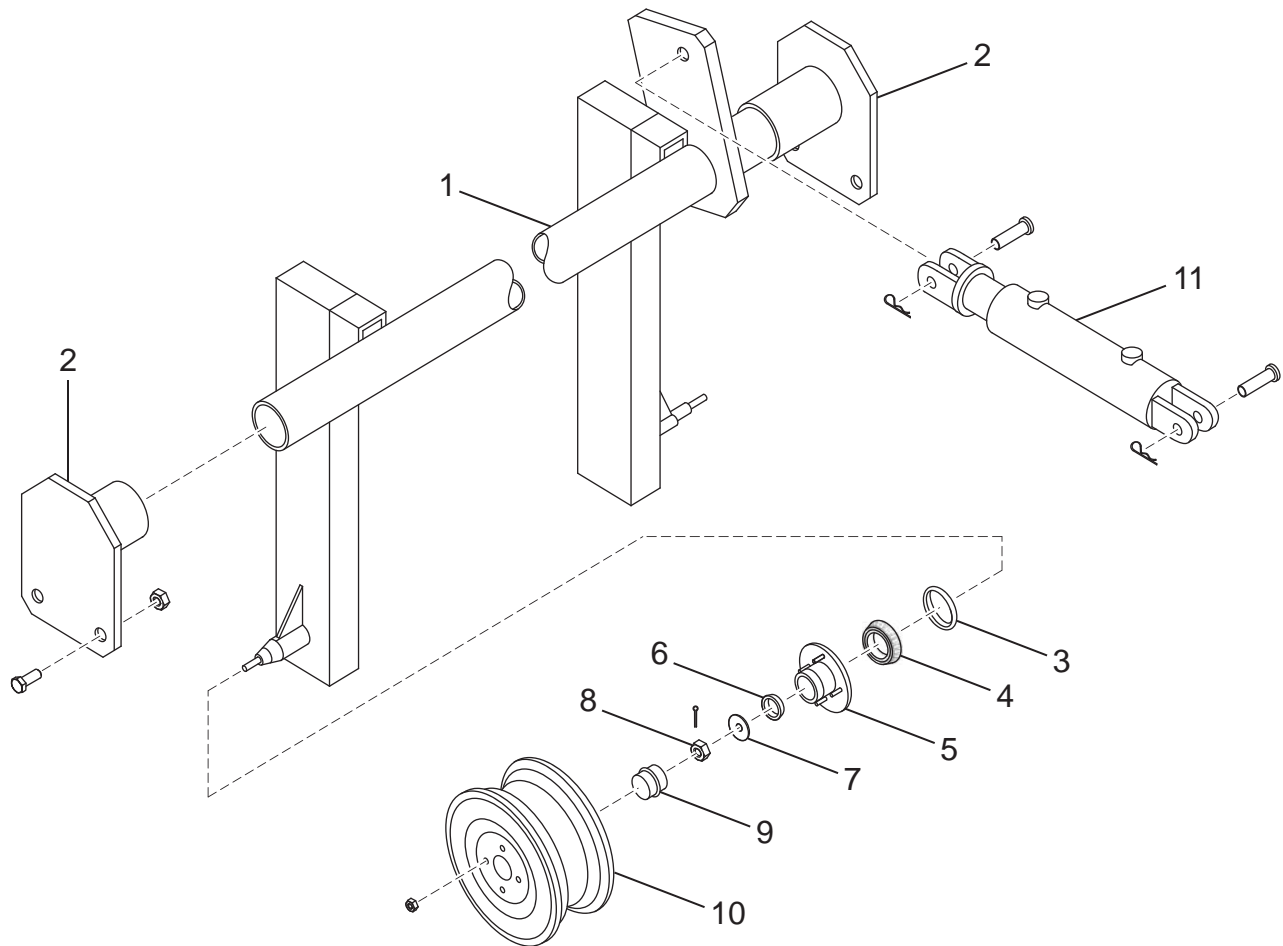
Connect the other end of the Hydraulic Cylinder just behind the front ballast box on the left side (looking from the rear) of the frame assembly.



Ref. No.	Part Number	Description	Quantity
1	050229	Tow Hitch Assembly	1
	X1228	3/4-10 x 1-3/4 in. Hex Bolt	4
	Y12L	3/4 - 10 Lock Nut	4
2	050072	Hose Support	1
	X0820	1/2 - 13 x 1-1/4 in. Hex Bolt	1
	Y08L	1/2 - 13 Lock Nut	1
3	031189	Jack	1
<b>NOT SHOWN</b>			
	022589	Snap Retaining Ring (for Jack)	1



## TOWING AXLE ASSEMBLY (6 FOOT AND 8 FOOT MODELS)



Ref. No.	Part Number	Description	Quantity
1	050230-01	Torsion Bar/Spindle Assembly	1
2	050230-02	Torsion Bar Bearing	2
	X1228	3/4 - 10 x 1-3/4 in. Hex Bolt	4
	Y12L	3/4 - 10 Lock Nut	4
3	WLSL-150	Seal	2
4	WLLM-67048	Inner Bearing Cone	2
5	WLH-15-450E	Hub Assembly	2
	WLLM-67010	Cup, Inner Bearing	2
	WLLM-11910	Cup, Outer Bearing	2
	WLST-500	Studs	8
6	WLLM-11949	Inner Bearing Cone	2
7	WLSW-751	Spindle Washer	2
8	WLSN-750	Spindle Nut	2
	WLSCP-100	Cotter Pin	2
9	WL1504	Dust Cap	2
10	050085	Wheel	2
	WLSTN-509	Lug Nut	8
11	050256	Hydraulic Cylinder with Clevis Pins and Clips	1

## **ASSEMBLY OF THE FINN KRIMPER (16 FOOT MODEL)**

Assembly of the Krimper begins with the Coulter Blade and Axle Assembly.

Slide the parts listed below onto the Coulter Axle, pushing them towards the end with the welded stop collar in the following sequence:

### ***16 Foot Model (for each axle)***

Washer with square hole (ref. #2)

Spring Washer (ref. #3)

Coulter Blade (ref. #4)

Bearing and Spacer Assembly (ref. #5 - 12)

**NOTE:** On the side gangs, the spacer is replaced by the gang weldment.

Coulter Blade (ref. #4)

Spacer Spool (ref. #13)

Coulter Blade (ref. #4)

Spacer Spool (ref. #13)

Coulter Blade (ref. #4)

Spacer Spool (ref. #13)

Coulter Blade (ref. #4)

Bearing and Spacer Assembly (ref. #5 - 12)

**NOTE:** On the side gangs, the spacer is replaced by the gang weldment.

Coulter Blade (ref. #4)

Spring Washer (ref. #3)

Axle End Spacer ( ref. #14)

Square Locknut (ref. #15)

Square Locknut (ref. #15)

After assembly, tighten the first square nut hand tight.

Leave the Coulter Blade and Axle Assembly lying on the ground, with the threaded studs of the Bearing Mounts facing up, so they can accept the Frame. Place the Frame on top of the Coulter Blade and Axle Assembly and secure it to the Bearing Mounts with the 5/8 in. Locknuts and Washers.

Tighten the first Square Nut on the Axle to 500 FC./LBS. torque; install the second square nut as a jam nut.

Assemble the Blade Scrapers to the Frame with the 1/2 in. Bolts, Washers and Locknuts.

To complete assembly, install the Tow Hitch and Tow Axle.

# COULTER BLADE AND AXLE ASSEMBLY (16 FOOT MODEL)

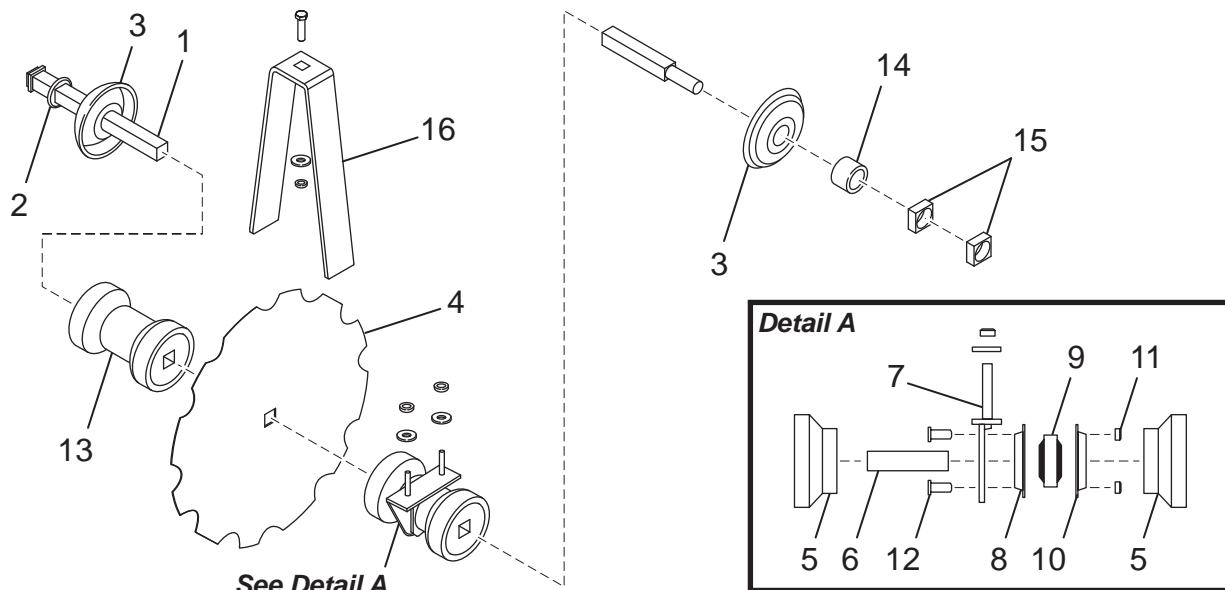
Ref. No.	Kit Ref.	Part Number	Description	Quantity
1	▲	050269-05	Axle	4
2	▲	050215	Washer with Square Hole	1
3	▲	050205	Spring Washer	2
4	▲	050053	Coulter Blade	9
5	▲◆	050263	Bearing Spacer	6
6	▲◆	050269-03	Bearing Spacer Tube	3
7	▲■◆	050264	Bearing Mount with Washer and Locknut	3
8	▲■◆	050267	Flangette	3
9	▲■◆	050265	Bearing	3
10	▲■◆	050266	Flangette with Lube Fitting	3
11	▲■◆	Y08L	Locknut	12
12	▲■◆	X0820	Bolt	12
13	▲	050043	Blade Spacer Spool	5
14	▲	050214	Axle End Spacer	1
15	▲	Y16L	Square Locknut	2
16		050203	Blade Scraper with Bolt, Washer and Locknut	8

## NOT SHOWN

		050287	Frame Assembly	1
--	--	--------	----------------	---

## KITS AND MARKERS

▲	050250-A	Coulter Blade and Axle Assembly	
■	050262	Bearing Assembly	3
◆	050268	Bearing and Spacer Assembly	3

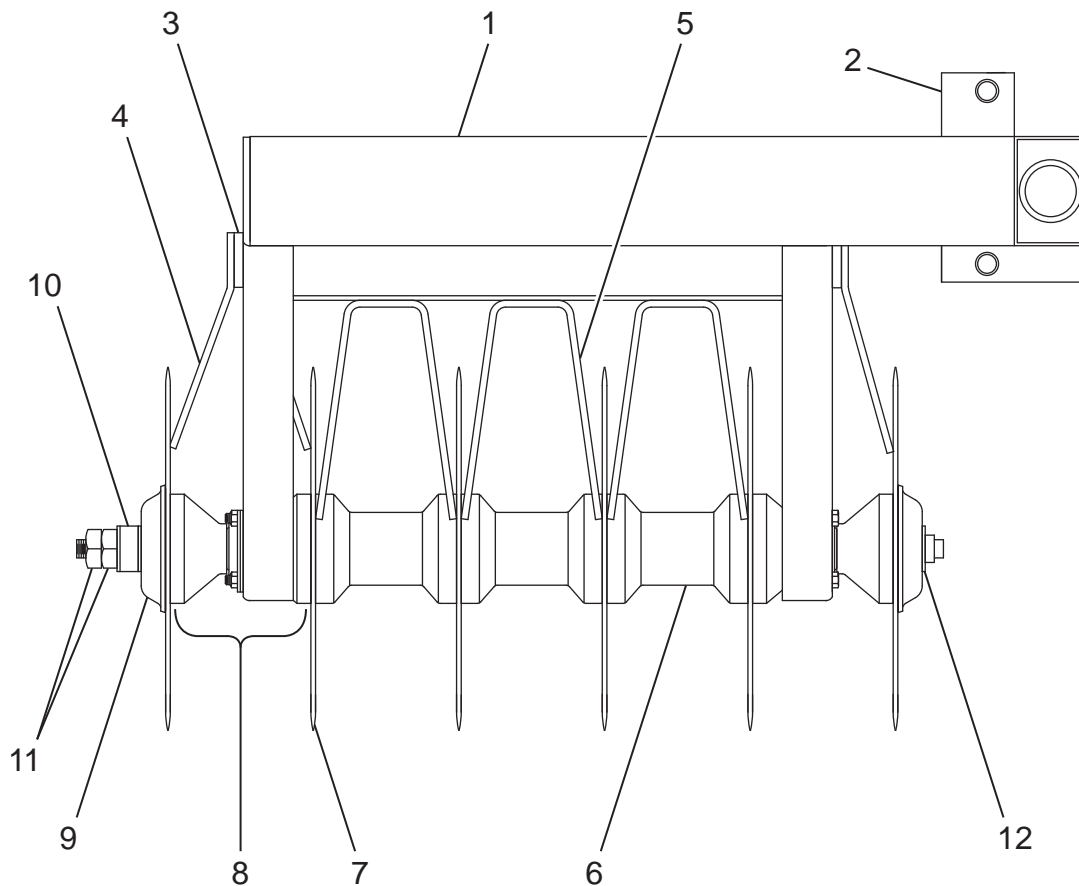


# SIDE GANG ASSEMBLY (16 FOOT MODEL)

Ref. No.	Part Number	Description	Quantity
1	050280	Gang Weldment	2
2	050277-09	Lift Linkage Plate	4
3	050278-02	Spacer	4
4	050278-01	End Scraper	8
5	050203	Blade Scraper	6
6	050043	Blade Spacer Spool	6
7	050053	Coulter Blade	12
8	050268	Bearing and Spacer Assembly (See Coulter Blade and Axle Assembly)	4
9	050205	Spring Washer	4
10	050214	Axle End Spacer	2
11	Y16L	Locknut	4
12	050215	Washer with Square Hole	2

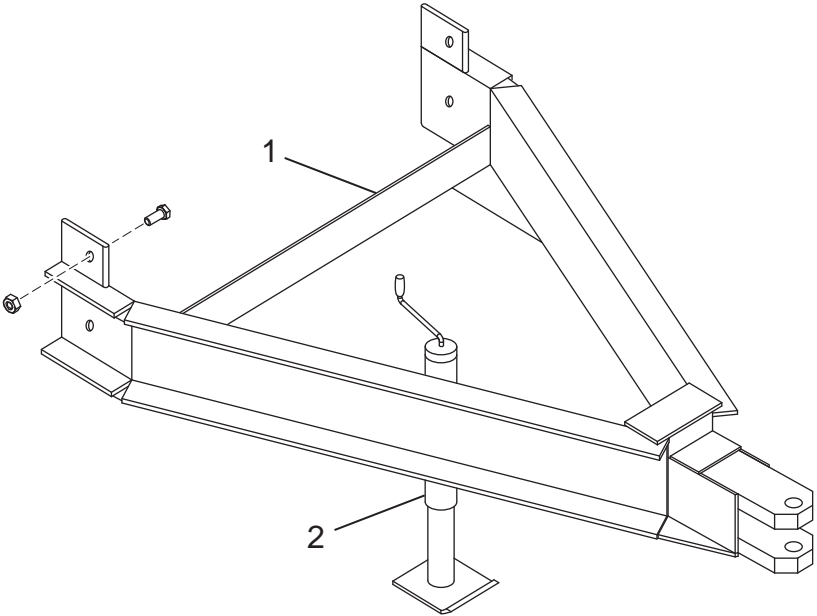
## NOT SHOWN

050230-02	Torsion Bar Bearing	4
-----------	---------------------	---



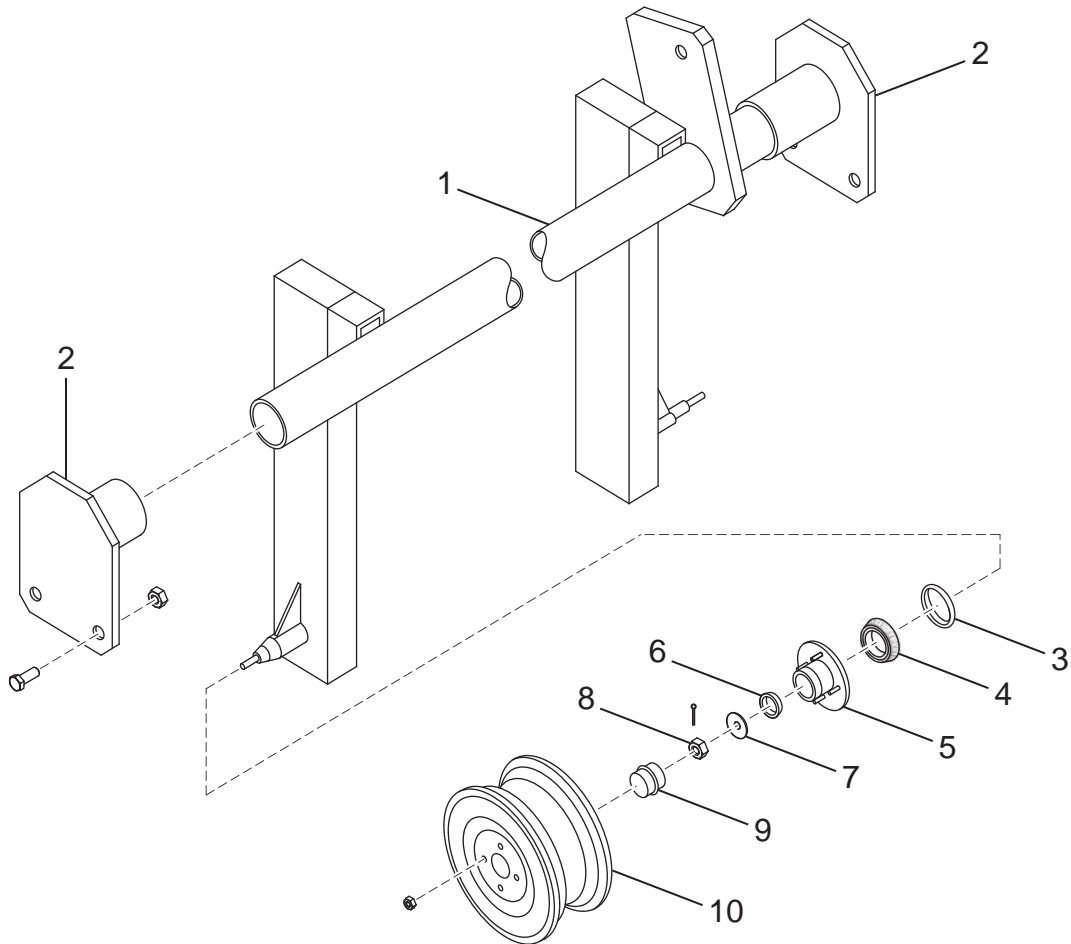
# TOW HITCH ASSEMBLY (16 FOOT MODEL)

Attach the Tow Hitch Assembly to the front of the frame.  
 Slide the Torsion Bar Bearings onto the ends of the Torsion Bar/Spindle Assembly.  
 Lay the Torsion Bar Assembly over the top of the assembled Krimper and attach it to the frame.  
 Connect the rod end of the Hydraulic Cylinder to the crank arm on the Torsion Bar/Spindle Assembly.  
 Connect the other end of the Hydraulic Cylinder just behind the front ballast box on the left side (looking from the rear) of the frame assembly.



Ref. No.	Part Number	Description	Quantity
1	050286	Tow Hitch Assembly	1
	X1228	3/4-10 x 1-3/4 in. Hex Bolt	4
	Y12L	3/4 - 10 Lock Nut	4
	X0816	1/2 - 13 x 1 in. Hex Bolt	2
	Y08L	1/2 - 13 Lock Nut	2
2	031189	Jack	1
<b>NOT SHOWN</b>			
	022589	Snap Retaining Ring (for Jack)	1

# TOWING AXLE ASSEMBLY (16 FOOT MODEL)

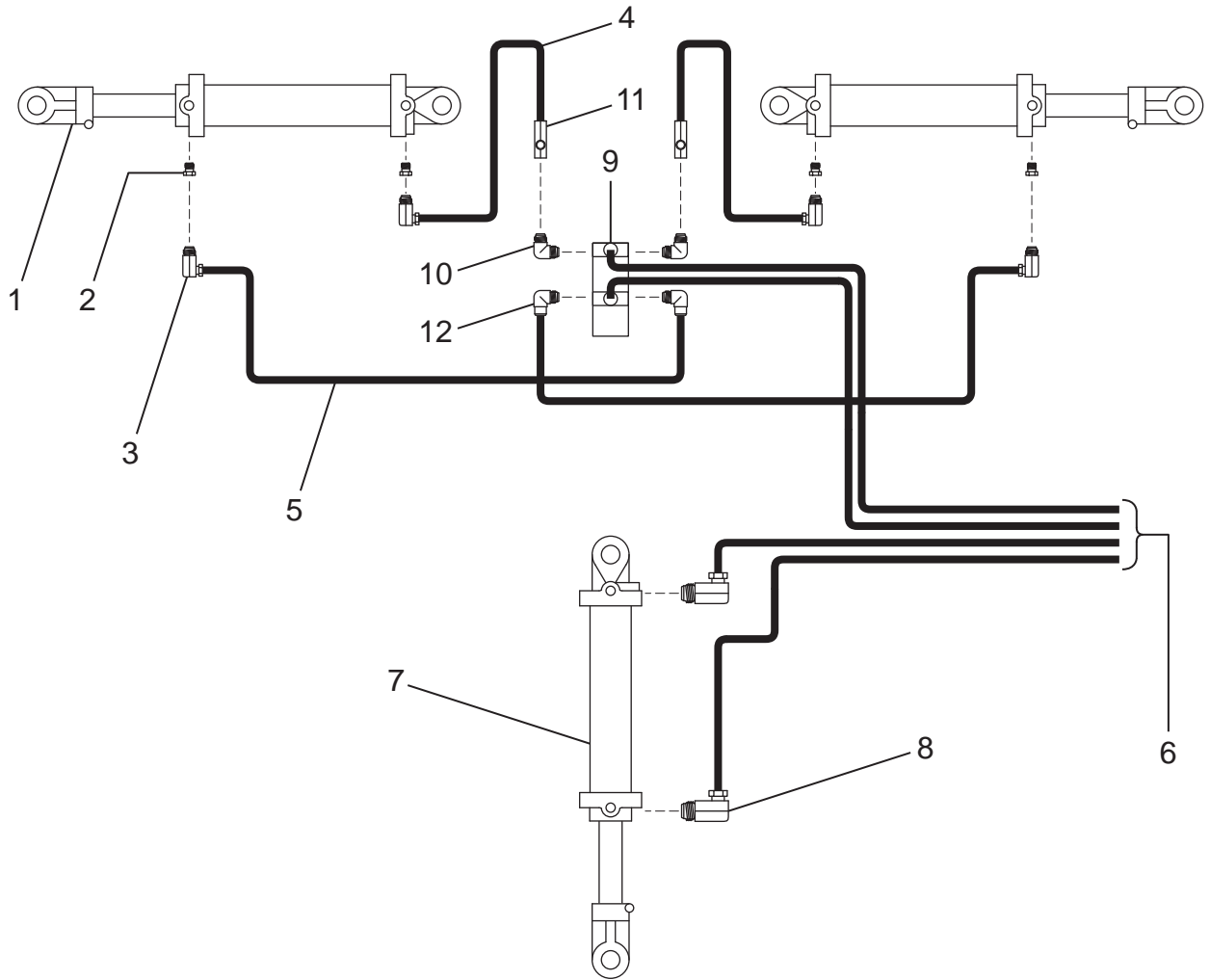


Ref. No.	Part Number	Description	Quantity
1	050284	Torsion Bar/Spindle Assembly	1
2	050230-02	Torsion Bar Bearing	2
	X1228	3/4 - 10 x 1-3/4 in. Hex Bolt	4
	Y12L	3/4 - 10 Lock Nut	4
3	WLSL-150	Seal	4
4	WLLM-67048	Inner Bearing Cone	4
5	WLH-15-450E	Hub Assembly	4
	WLLM-67010	Cup, Inner Bearing	4
	WLST-500	Studs	16
6	WLLM-11949	Inner Bearing Cone	4
7	WLSW-751	Spindle Washer	4
8	WLSN-750	Spindle Nut	4
	WLSCP-100	Cotter Pin	4
9	WL1504	Dust Cap	4
10	050085	Wheel	4
	WLSTN-509	Lug Nut	16

## NOT SHOWN

050282	Tire	4
--------	------	---

# HYDRAULIC PARTS (16 FOOT MODEL)



Ref. No.	Part Number	Description	Quantity
1	040257	Hydraulic Cylinder	2
2	055229	Reducer Bushing	4
3	025220	Swivel Street Elbow	4
4	050276	Short Hydraulic Hose	2
5	050275	Long Hydraulic Hose	2
6	050274	Tractor Connection Hose	4
7	050256	Hydraulic Cylinder	1
8	021805	Swivel Elbow	2
9	050279-06	Hydraulic Tee Mount	1
10	FW71558	Male-Male Elbow	2
11	FW71805	Needle Valve	2
12	FW71502	Reducing Street Elbow	2

## MAINTENANCE

### DAILY

1. Wash the unit to remove any debris or corrosive materials.
2. Check the hydraulic cylinders for signs of wear.

### SEASONAL AND WINTER STORAGE MAINTENANCE

1. If possible, cover the unit with a tarp or park inside of an enclosure.
2. Lubricate all fittings.

### LUBRICATION

The bearings on the coultter blade axle(s) should be lubricated daily or before each operation using chassis lubricant.

#### **6 Foot and 8 Foot Models**

There are four lube points on the 8 foot Krimper model (one per each bearing).

There are three lube points on the 6 foot model (one per each bearing).

On models with the Tow Hitch and Towing Axle Option, the two Torsion Bar Bearings should also be lubricated prior to each use with chassis lubricant.

#### **16 Foot Model**

There are eight lube points on the 16 foot Krimper model (one per each bearing).

In addition, the two rear Torsion Bar Bearings and the four Wing Bearings should be lubricated prior to each use with chassis lubricant.

## OTHER PARTS INFORMATION

Your Krimper may be provided with a manual canister attached to it. This canister is for storing this manual with the Krimper. If your Krimper does have a manual canister attached, the part number below can be used to obtain a replacement should it be needed.

<b>Part Number</b>	<b>Description</b>	<b>No. Required</b>
	FINN Krimper Operator Instructions and Parts Manual	1
A1096-001	Manual Canister	1