

FINN

CORPORATION



HydroSeeder

PARTS MANUAL

MODEL NO. TL-30 SERIAL NO. RS

WARRANTY

Finn warrants to the original Purchaser for use (or rental to others for use) all new construction machinery and attachments therefore manufactured by Finn to be free from defects in material and workmanship for a period of 12 months from date of purchase or 1200 hours of use, whichever comes first. Replacement parts provided under the terms of this warranty are warranted for the remainder of the warranty period applicable to the product in which installed, as if such parts were original components of that product. Finn makes no warranty with respect to (a) allied equipment or grade accessories not manufactured by it (such as, but not limited to tires, ignitions, starters, batteries, magnetos, carburetors, engines or like or unlike equipment or accessories), such being subject to the warranty, if any, provided by their respective manufacturers; or (b) second-hand, used, altered, or rebuilt machines. THE WARRANTY DESCRIBED IN THIS PARAGRAPH SHALL BE IN LIEU OF ALL OTHER WARRANTIES, EXPRESS OR IMPLIED, INCLUDING, BUT NOT LIMITED TO, ANY IMPLIED WARRANTY OR MERCHANTABILITY OR FITNESS FOR A PARTICULAR PURPOSE.

Upon notification of Finn within the above-stated warranty period of any failure to conform to this warranty, and upon inspection by Finn to verify said nonconformity and to verify the continuing existence of the warranty period, Finn will provide a new part or a repaired part, whichever Finn elects, to replace the part found to be defective. Such parts will be provided without charge to the Purchaser during normal working hours at a place of business of a Finn dealer or other establishment authorized by Finn to effect said repairs or replacements, but Purchaser shall bear all costs of transporting the product to and from such place of business or establishment. Correction of nonconformities, in the manner and for the period time provided above, shall constitute fulfillment of all liabilities of Finn under this contract.

THE REMEDIES OF THE USER SET FORTH HEREIN ARE EXCLUSIVE, WITHOUT REGARD TO WHETHER ANY DEFECT WAS DISCOVERABLE OR LATENT AT THE TIME OF DELIVERY OF THE PRODUCT TO THE PURCHASER. The essential purpose of this exclusive remedy shall be to provide the Purchaser with repair or replacement of parts that prove to be defective within the period and under the conditions previously set forth. This exclusive remedy shall not have failed of its essential purpose (as that term is used in the uniform Commercial Code) provided Finn remains willing to repair or replace defective parts within a commercially reasonable time after it obtains actual knowledge of the existence of a particular defect.

IN NO EVENT SHALL FINN BE LIABLE FOR ANY SPECIAL, CONSEQUENTIAL, INCIDENTAL, OR INDIRECT DAMAGES, INCLUDING LOST PROFITS OR LOST COMMERCIAL OPPORTUNITIES, WITH RESPECT TO THE SALE OF THE ABOVE-WARRANTED PRODUCT OR ANYTHING DONE IN CONNECTION THEREWITH, OR FOR PROPERTY DAMAGE SUSTAINED BY A PERSON CLAIMING TO BE A THIRD-PARTY BENEFICIARY OF A SURVIVING WARRANTY UNDER THE LAW OF ANY JURISDICTION.

Effective October 1, 1989.

INDEX

LUBRICATION INSTRUCTIONS	2
HATCH ASSEMBLY	3
SUCTION AND RECIRCULATION	4-5
AGITATOR ASSEMBLY	6
HYDRAULIC AGITATOR DRIVE	7
HYDRAULIC SYSTEM	8-9
MISCELLANEOUS PARTS AND DECALS	10-11
POWER SECTION AND WIRING DIAGRAM	12-13
DISCHARGE HOSE, NOZZLES AND TOOL KIT	14
SLURRY PUMP	15
HYDRAULIC MOTOR	16
HYDRAULIC PUMP	17
HYDRAULIC VALVE	18
SPARE PARTS AND REPAIR KITS	19

LUBRICATION INSTRUCTIONS

SERVICE DAILY: Generally means service every 10 hours.

SERVICE WEEKLY: Generally means service every 50 hours.

PRESSURE LUBRICATOR

Must be kept filled during operation. Check each time machine is started. Lack of attention will result in premature seal failure. Keep clean at all times. Use Soda Base grease.

TANK SEALS

Grease at end of each day's operation using chassis lubricant.

ENGINE CRANK CASE

Check oil level daily. Oil level is to be maintained.

Change oil every 50 hours (follow instructions in engine manual).

PUMP

Grease pump bearings every 50 hours using chassis lubricant.

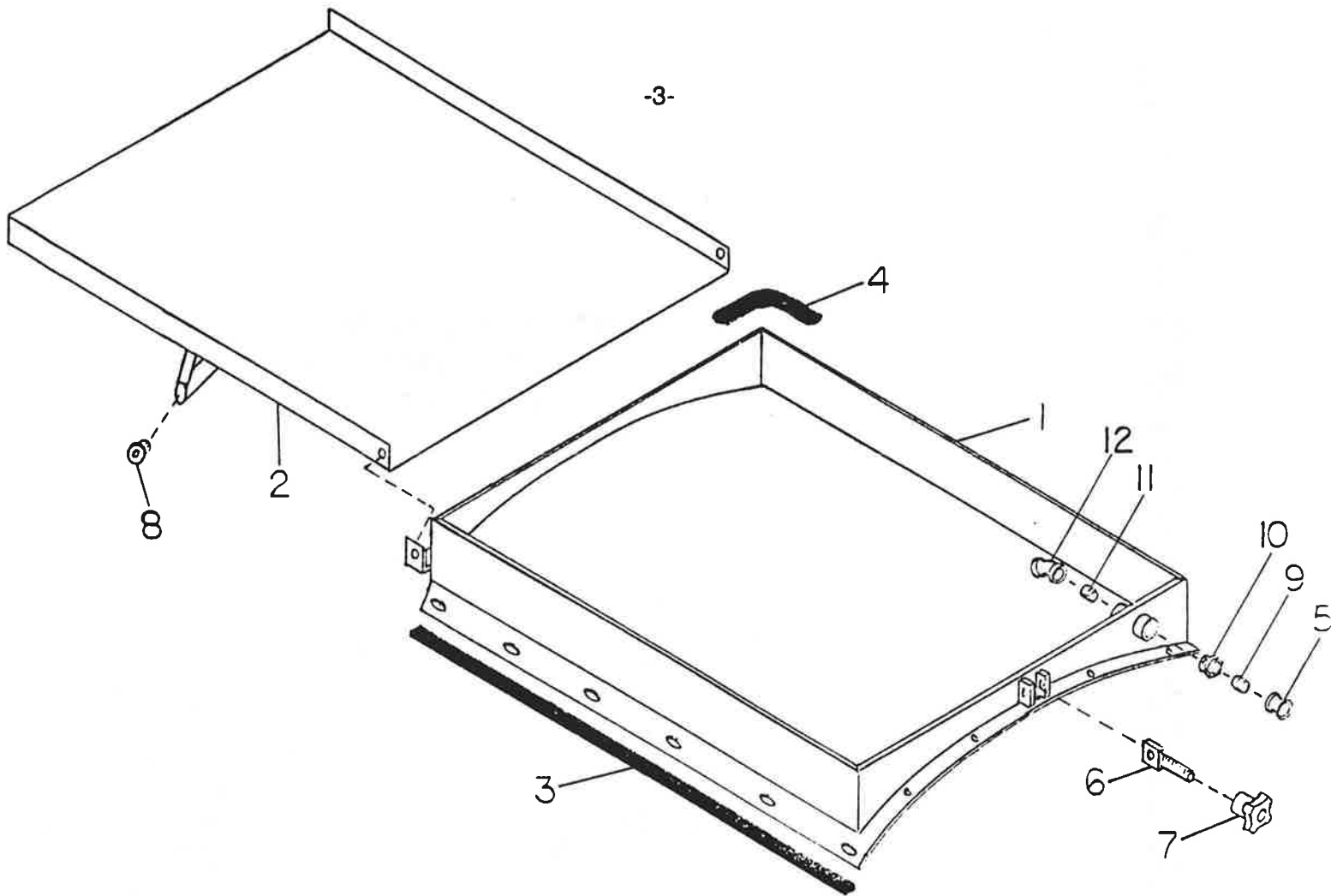
DO NOT OVERFILL.

OIL FILTER

Replace oil filter every 100 hours of operation (follow instructions in engine manual).

HYDRAULIC SYSTEM

Check fluid level - change oil and filter if milky or after 500 hours. Use Gulf 46AW, Mobile DTE25, or Shell-Tellus 29 (or equivalent ISO grade 46 hydraulic oil).



HATCH ASSEMBLY

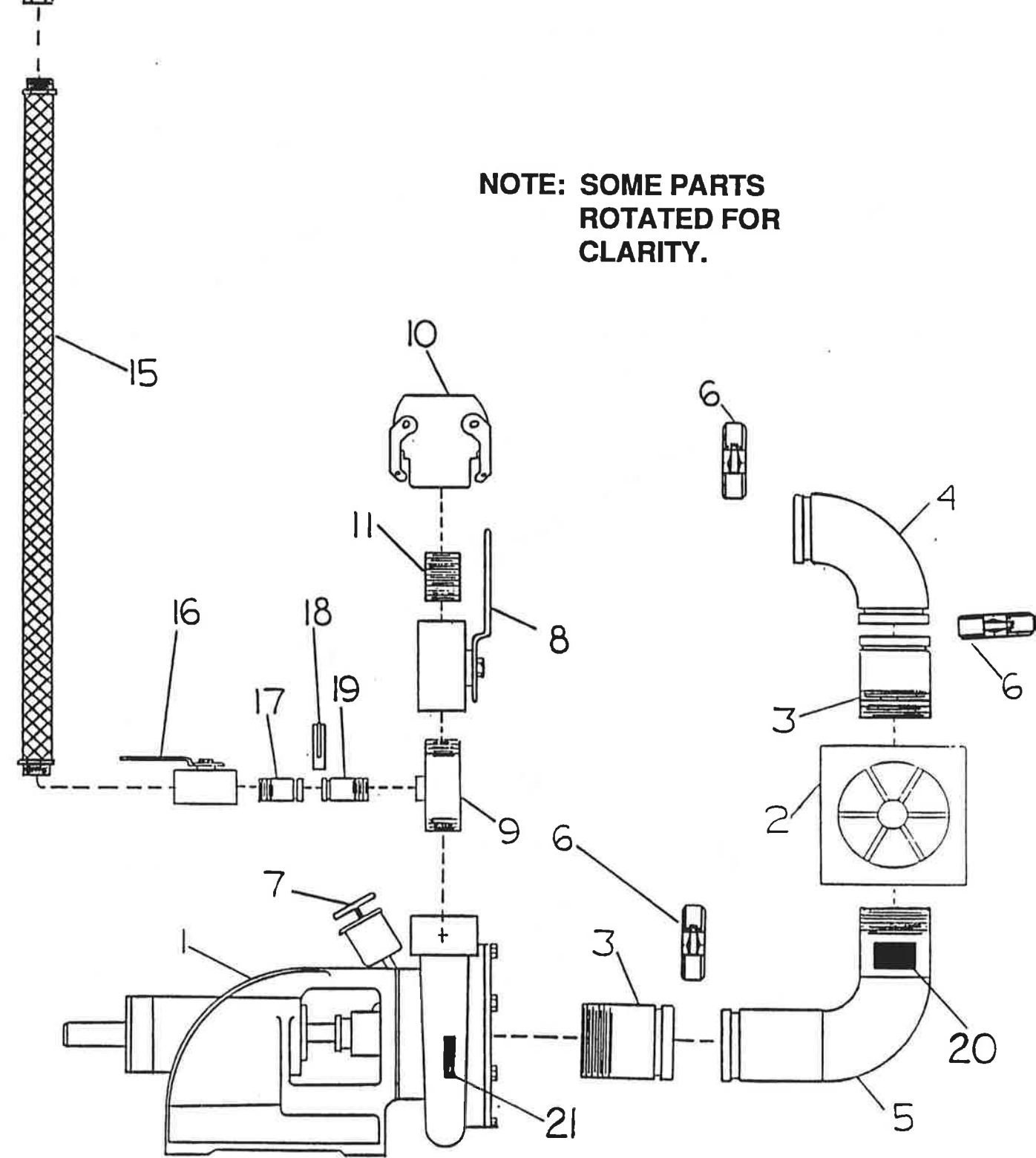
Ref. No.	Part No.	Description	No. Req'd.
1	085037	Hatch Liner	1
2	085038	Hatch Lid	1
3	190044	Gasket, Hatch Liner	7-1/4 ft.
4	190087	Seal, Hatch Lid	7-1/4 ft.
5	080095	Male Adapter	1
6	085038-05	Hold-Down Stud	1
7	070583	Knob	1
8	085038-07	Plastic Pipe Plug	2
9	160305	Nipple	1
10	160750	Reducer Bushing	1
11	160307	Nipple	1
12	160038	45 deg. Elbow	1

**WHEN ORDERING PARTS, BE SURE TO STATE
SERIAL NUMBER OF MACHINE**

13

-4-

**NOTE: SOME PARTS
ROTATED FOR
CLARITY.**



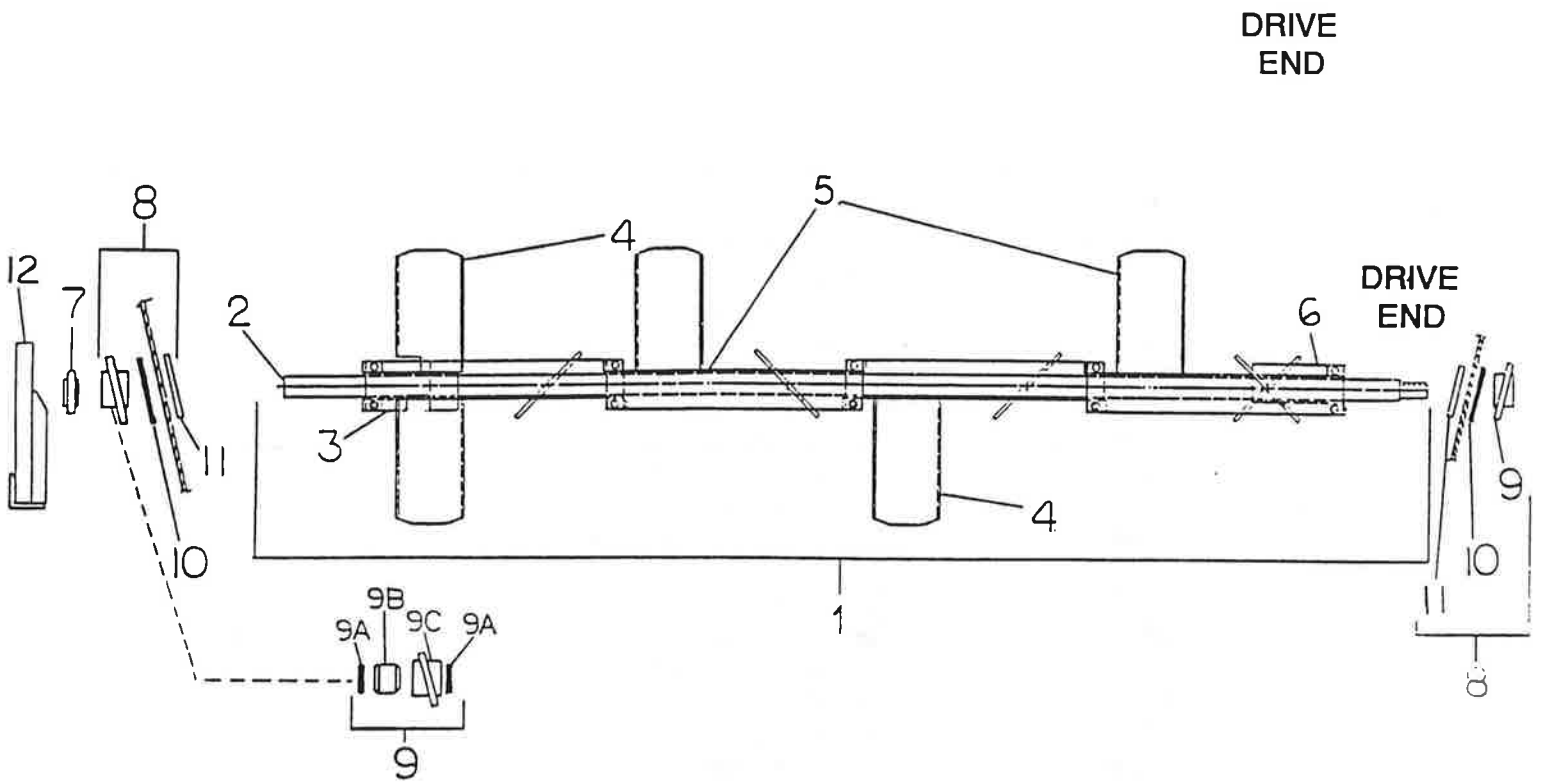
**WHEN ORDERING PARTS, BE SURE TO STATE
SERIAL NUMBER OF MACHINE**

SUCTION AND RECIRCULATION

Ref. No.	Part No.	Description	No. Req'd.
1	080331	Slurry Pump (See page 15 for parts)	1
2	004737	Shut-Off Valve	1
2A	085056-01	Shut-Off Valve Handle	1
3	080364-08	Connector Pipe	2
4	002868	Elbow	1
5	085060-01	Connecting Pipe Elbow	1
6	080366	Pipe Clamp	1
	002439	Seal, Pipe Clamp	1 per
7	002383	Pressure Lubricator	1
7A	160322	Nipple (Not Shown)	1
7B	160697	Bell Reducer (Not Shown)	1
8	085028	Ball Valve	1
9	080364-12	Recirculation Tee	1
10	080377	Female Coupler	1
	080262	Gasket, Coupler	1
11	160309	Close Nipple	1
13	080094	Female Coupler	1
	080262	Gasket, Coupler	1
15	085079	Recirculation Hose	1
16	085027	Ball Valve	1
17	005083-08	Recirculation Connector	1
18	005156	Pipe Clamp	1
	005183	Seal, Pipe Clamp	1 per
19	005083-07	Recirculation Nozzle	1
20	008209	Decal "Danger-Before Loosening Clamps"	1
21	007607	Decal "Drain Water"	1

** All Other Decals Can Be Found On pages 10 & 11. **

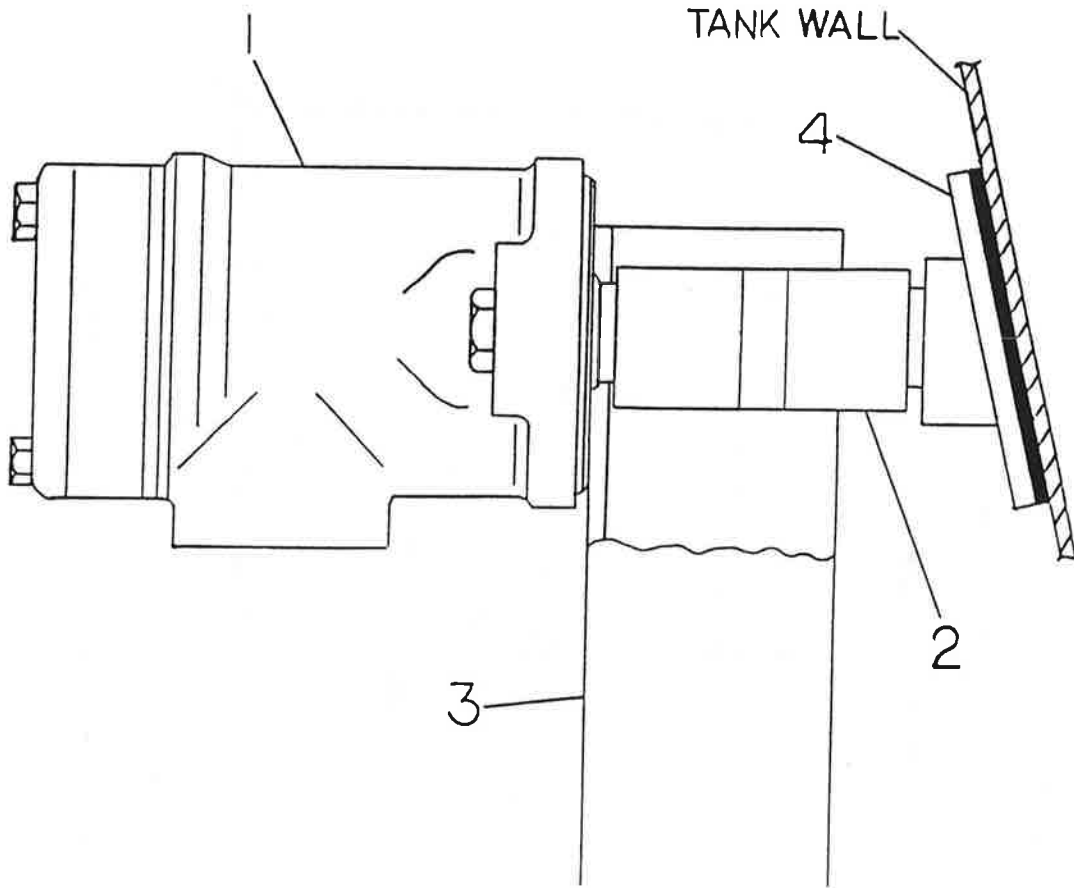
**WHEN ORDERING PARTS, BE SURE TO STATE
SERIAL NUMBER OF MACHINE**



AGITATOR ASSEMBLY

Ref. No.	Part No.	Description	No. Req'd.
1	085052	Agitator Assembly	1
2	085051-02	Agitator Shaft	1
3	085050-03	Front Paddle Section with Notch	1
4	085050-01	Center Paddle Section	2
5	085050-10	Center Paddle Section with Key	2
6	085050-02	Rear Paddle Section	1
7	085031	Bearing	1
8	085074	Agitator Seal Assembly	2
9	085051-01	Agitator Seal Flange Assembly	1 per
9A	085020	Seal	2 per
9B	085051-03	Bushing	1 per
9C	085051-10	Housing	1 per
10	085026	Agitator Seal	1 per
11	085036	Flange	1 per
12	085044-02	Front Bearing Support	1

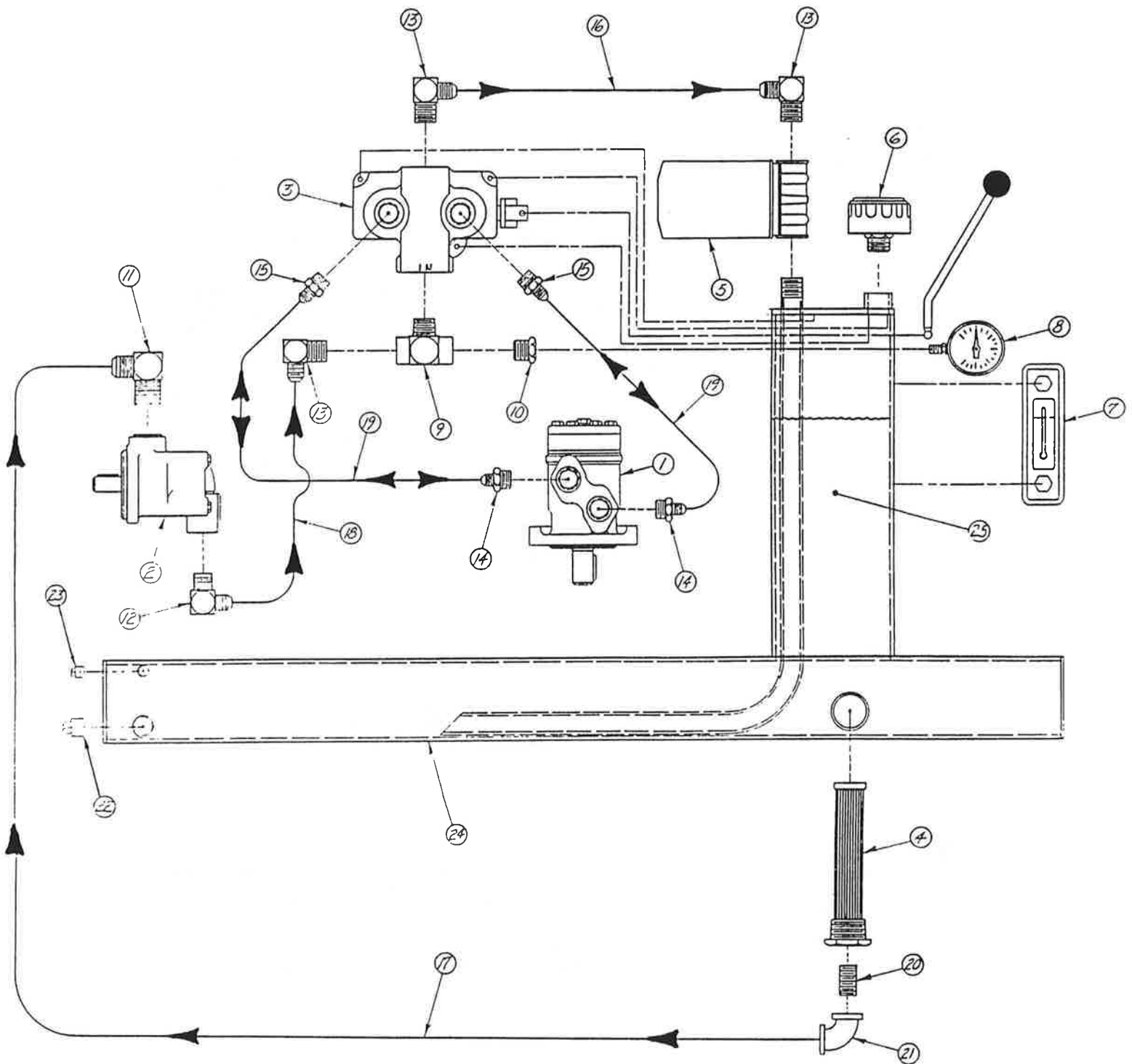
**WHEN ORDERING PARTS, BE SURE TO STATE
SERIAL NUMBER OF MACHINE**



HYDRAULIC AGITATOR DRIVE

Ref. No.	Part No.	Description	No. Req'd.
1	085010	Hydraulic Motor (See page 16 for parts)	1
2	085022	Coupling, Sleeve	1
3	085044-01	Hydraulic Motor Support	1
4	085074	Agitator Seal Assembly (See page 6 for parts)	2

**WHEN ORDERING PARTS, BE SURE TO STATE
SERIAL NUMBER OF MACHINE**

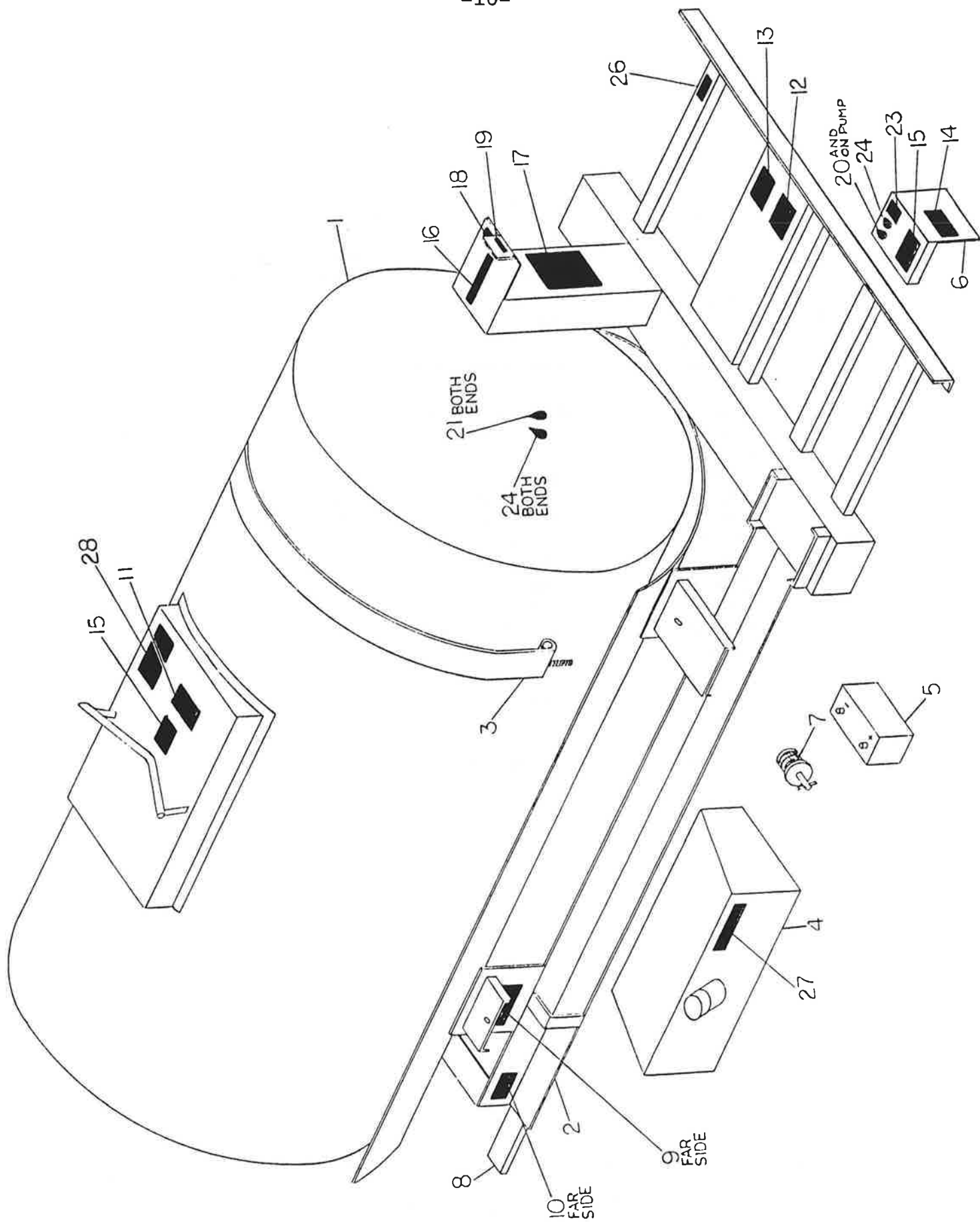


**WHEN ORDERING PARTS, BE SURE TO STATE
SERIAL NUMBER OF MACHINE**

HYDRAULIC SYSTEM

Ref. No.	Part No.	Description	No. Req'd.
1	085010	Hydraulic Motor (See page 16 for parts)	1
2	080004B	Hydraulic Pump (See page 17 for parts)	1
3	022850	Hydraulic Valve (See page 18 for parts)	1
4	004618	Suction Strainer	1
5	021617	Return Filter	1
	021618	Element, Filter	1
6	004900	Filler Breather Cap	1
7	080329	Sight Gauge	1
8	012044	Pressure Gauge	1
9	011625	Female Run Tee	1
10	011936	Bushing	1
11	011931	Adapter Union-90 degrees	1
12	023652	Adapter Union-90 degrees	1
13	085013	Adapter Union-90 degrees	3
14	085014	Adapter Union	2
15	085015	Adapter Union	2
16	085016	Return Hose	1
17	085017	Suction Hose	1
18	085018	Pressure Hose	1
19	085019	Motor Hose	2
20	160303	Close Nipple	1
21	160008	Elbow	1
22	160236	Pipe Plug	1
23	160230	Pipe Plug	1
24	085040	Hydraulic Reservoir	1
25	190074	Hydraulic Oil	5 gal.

**WHEN ORDERING PARTS, BE SURE TO STATE
SERIAL NUMBER OF MACHINE**



MISCELLANEOUS PARTS & DECALS

Ref. No.	Part No.	Description	No. Req'd.
1	085061	Tank - 300 gallon	1
2	085048	Frame	1
3	085055	Tank Strap	2
4	085041	Fuel Tank	1
4A	085042	Fuel Tank Cradle (Not Shown)	1
4B	003488	Fuel Gauge (Not Shown)	1
4C	190044	Gasket, Fuel Tank (Not Shown)	3-1/2 ft.
5	GGF-235	Battery	1
5A	005161	Rubber Strap (Not Shown)	1
6	085006	Coupling Guard	1
7	004593	Drain Plug	1
8	085072	Wood Frame Runners	2
8A	085067	Lag Screw, Wood Frame Runner (Not Shown)	8
8B	085059-01	Sump Weldment (Not Shown)	1
8C	085082	Sump Gasket (Not Shown)	1

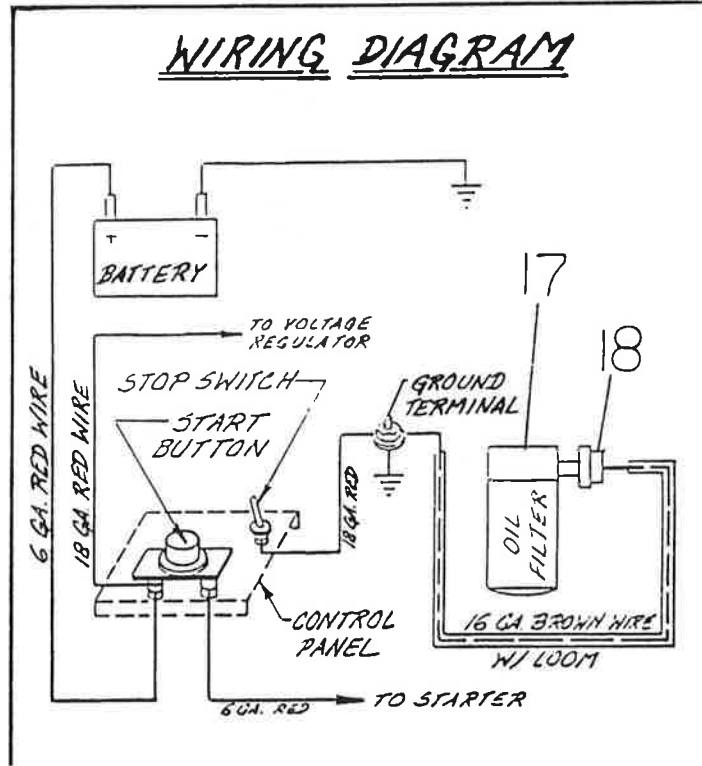
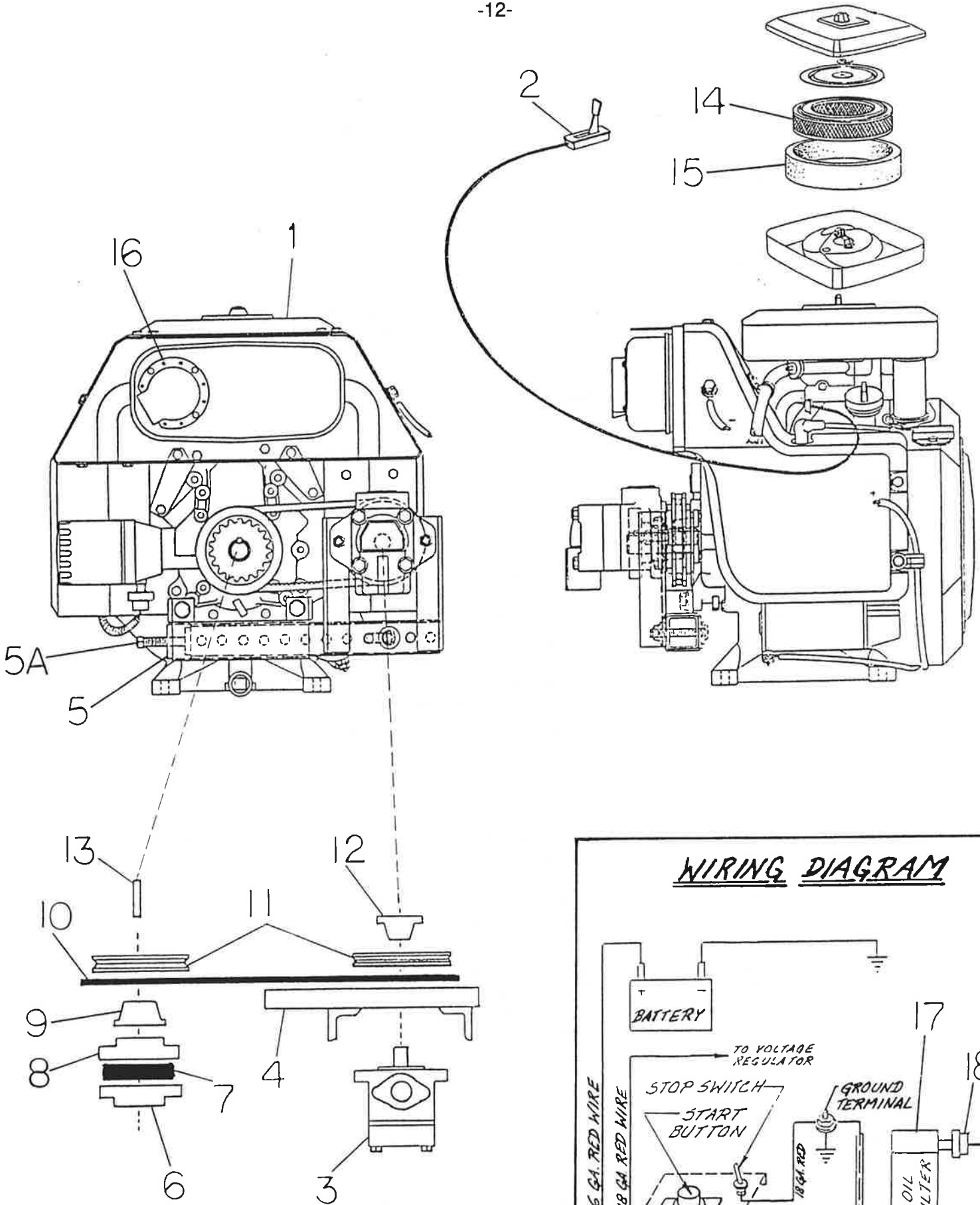
DECALS

9	011690	Nameplate	1
9A	031235	"FINN" Decal	2
9B	011595	"Hydroseeder" Decal	2
10	011662	U.S. Patent Numbers	1
11	008097	Danger - Before Entering Tank	1
12	011567	Danger - Do Not Aim Stream	1
13	005216	Danger - Do Not Use Remote Valve	1
14	022357	Caution - Turn Off Engine	1
15	023519	Caution - Wear Eye Protection	2
16	023390	Hydraulic Oil	1
17	021665	Hydraulic Instructions	1
18	008286	Agitator Control	1
19	007535	Throttle	1
20	007231	Service Weekly	3
21	007351	Hand Gun Only	2
22*	008209	Danger - Before Loosening Clamps	1
23	006869	Caution - Seal Lubricator	1
24	007230	Service Daily	3
25*	007607	Drain Water	1
26	012031	Valve Operation	2
27	031331	Gasoline	1
28	085078	Operation Instructions	1

* NOTE: Locations are shown on page 5.

NOTE: 080699 Decal Kit contains decals with reference numbers 10 through 28.

**WHEN ORDERING PARTS, BE SURE TO STATE
SERIAL NUMBER OF MACHINE**



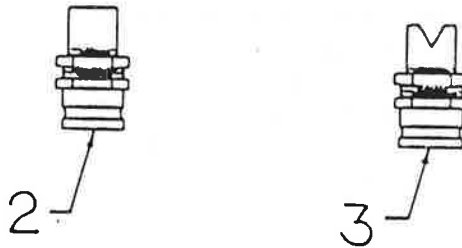
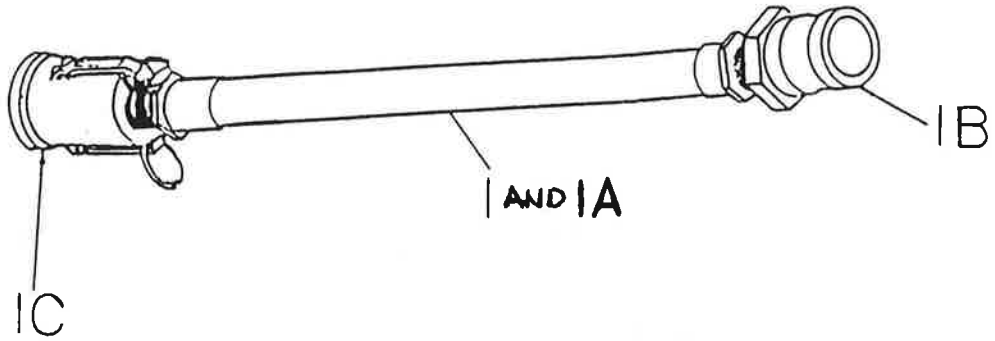
POWER SECTION AND WIRING DIAGRAM

Ref. No.	Part No.	Description	No. Req'd.
1	085007	Engine	1
2	085070	Remote Throttle	1
3	080004B	Hydraulic Pump (see page 17 for parts)	1
4	085049-01	Pump Mount Arm - Fixed	1
5	085049-02	Pump Arm - Tensioning	1
5A	Z06332SCP	Set Screw	1
6	085024	Coupling - Pump Half	1
7	080324	Coupling Insert	1
8	085023	Coupling - Engine Half	1
9	020813B	Bushing - Engine	1
10	085021	Belt	1
11	080200	Sheave	2
12	021668B	Bushing-Pump	1
13	000408	Key	1
14	BE394018	Air Cleaner Cartridge	1
15	BE271271	Air Cleaner Pre-Cleaner	1
16	BE222573	Muffler Deflector	1
17	BE491056	Oil Filter	1
18	085071	Temperature Switch	1
	BE298090	Fuel Filter (Not Shown)	1
	085063	Wiring Harness	1

* NOTE: #085062 is Complete Engine Assembly

Note: BE parts are no longer available through Finn.
Please contact Briggs and Stratton

**WHEN ORDERING PARTS, BE SURE TO STATE
SERIAL NUMBER OF MACHINE**



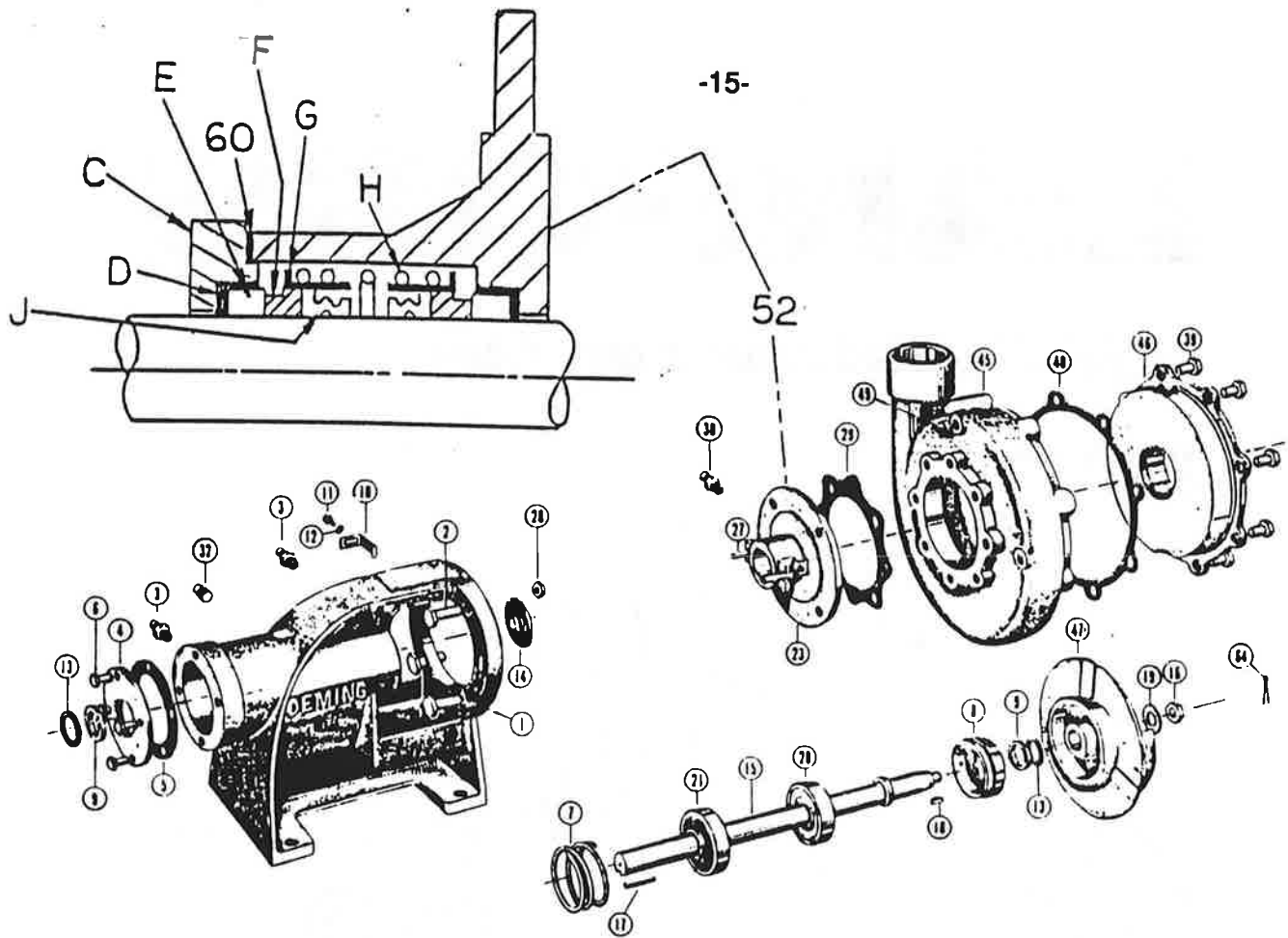
DISCHARGE HOSE AND NOZZLES

Ref. No.	Part No.	Description	No. Req'd.
1	080238-05	Discharge Hose x 50 ft.	1
1A	080238-03	Discharge Hose x 10 ft.	1
1B	080260	Adapter	1
1C	080261	Female Coupler	1
2	080273	Long Distance Nozzle Assembly	1
	080131	Nozzle	1
	160749	Bushing	1
	080260	Adapter	1
3	080272	Fan Nozzle Assembly	1
	080130	Nozzle	1
	160749	Bushing	1
	080260	Adapter	1

TOOL KIT

Part No.	Description	No. Req'd.
000698	Grease, Pump Lubricant	1
008204	Paint, Touch Up	1
004593	Drain Plug	1
	Parts Book, Engine	1
	Operators Manual	1
	Parts Manual	1

**WHEN ORDERING PARTS, BE SURE TO STATE
SERIAL NUMBER OF MACHINE**



SLURRY PUMP
ASSEMBLY Part No. 80331

Ref. No.	Part No.	Description	No. Req'd.	Ref. No.	Part No.	Description	No. Req'd.
1	80421	Support Head	1	*21	80420	Ball Bearing (Coupling End)	1
2		Cap Screws (Casing)	4	27		Bolts (Seal Gland)	2
3	80432	Grease Fittings	2	28		Nuts (Seal Gland)	2
4	80424	Bearing Cover	1	*29	80431	Gasket (Seal Head)	1
*5	80436	Gasket (Bearing Cover)	1	32		Pipe Plug (Support Frame)	1
6		Cap Screws (Bearing Cover)	4	39		Cap Screws (Suction Head)	8
7	80437	Bearing Adjusting Spring	1	45	80415	Casing	1
8	80428	Bearing Adjusting Nut	1	46	80418	Suction Head (3" NPT)	1
*9	80427	Felt Ring	2	47	80416	Impeller	2
10	80430	Adjusting Nut Clip	1	*48	80429	Gasket (Suction Head)	1
11		Cap Screws (Adjusting Nut Clip)	1	49		Pipe Plugs (Liquid End)	2
12		Lock Washer (Adjusting Nut Clip)	1	52	80419	Seal Head	1
13	80433	Clamping Ring	2	60	80439	Gasket (Seal Head)	1
14	80425	Slinger	1	64	80434	Cotter Pin	1
15	80417	Shaft Assembly (Includes items 16, 18, 19 and 64)	1	C	80438	Seal Gland	1
16	80422	Castellated Nut	1	D		Seat Gasket	2
17	80426	Shaft Key, Square	1	E		Floating Sea	2
18	80423	Impeller Key, Woodruff	1	*F	80407	Seal Face, Carbon	2
19	80435	Impeller Washer	1	G		Retainer	2
*20	80420	Ball Bearing (Seal Head End)	1	H		Spring	1

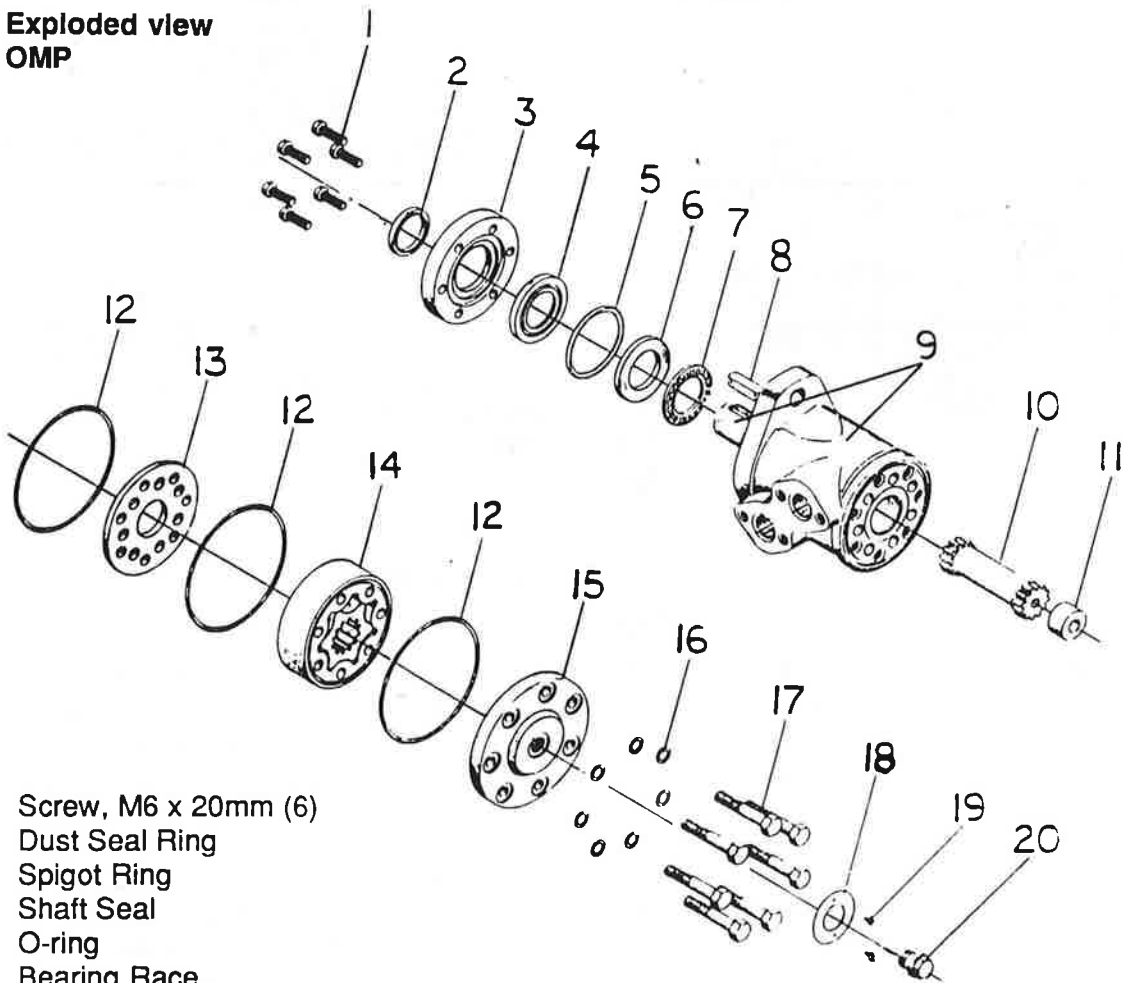
* Suggested Spare Parts

**WHEN ORDERING PARTS, BE SURE TO STATE
SERIAL NUMBER OF MACHINE**

DANFOSS

SPARE PARTS Hydraulic motor OMP

Exploded view
OMP

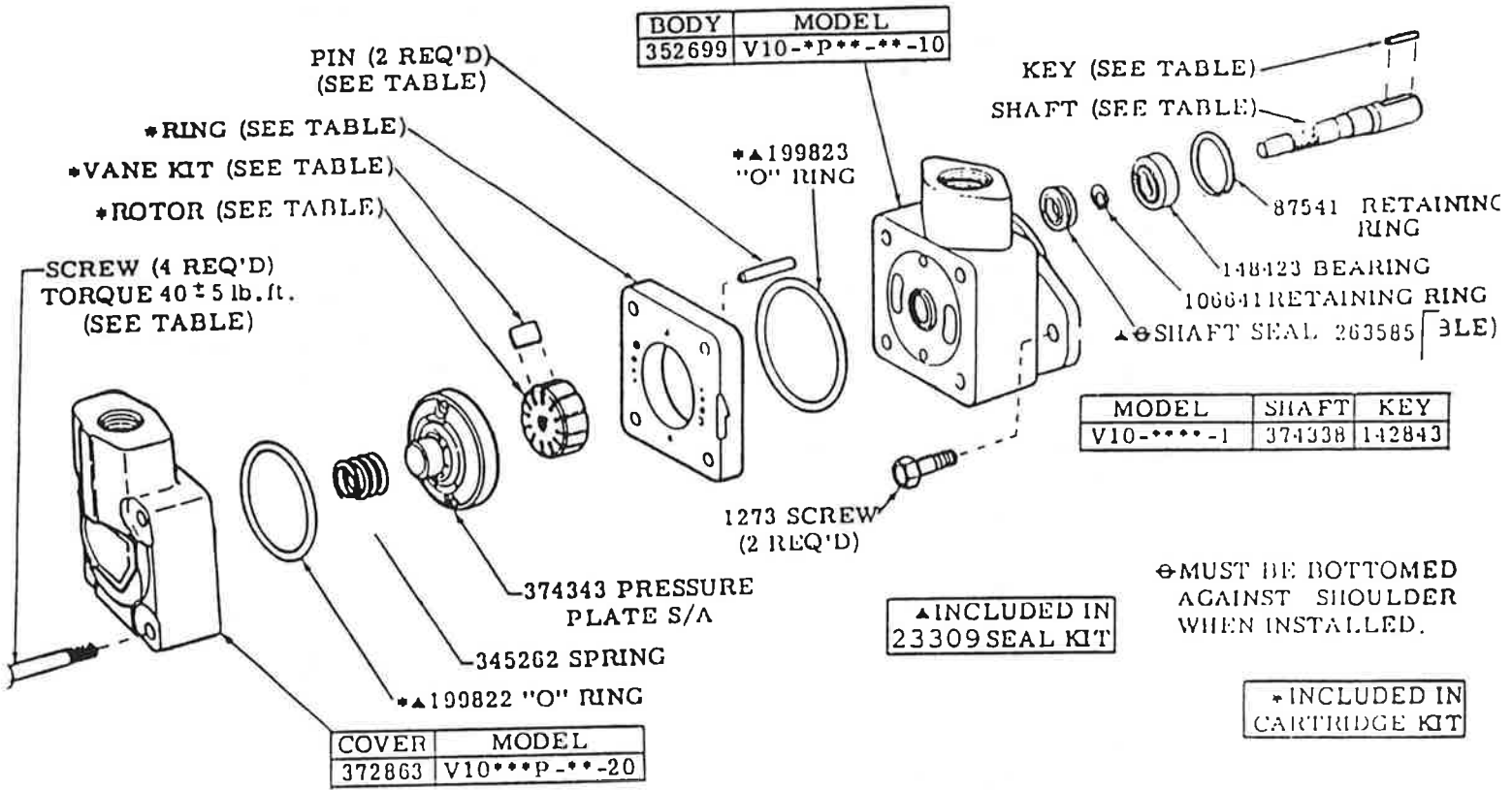


- 1. Screw, M6 x 20mm (6)
- * 2. Dust Seal Ring
- 3. Spigot Ring
- * 4. Shaft Seal
- * 5. O-ring
- 6. Bearing Race
- 7. Axial Needle Bearing
- 8. Key
- 9. Housing and Output Shaft
- 10. Cardan Shaft
- 11. Spacer
- * 12. O-ring (3)
- 13. Distributor Plate
- 14. Gear Wheel Set
- 15. End Cover
- * 16. Washer (7)
- 17. Screw, M8 x 55mm
- 18. Nameplate
- 19. Drive Screw
- 20. Drain Plug w/O-ring

* Included in replacement Seal Kit, Part No. 85091

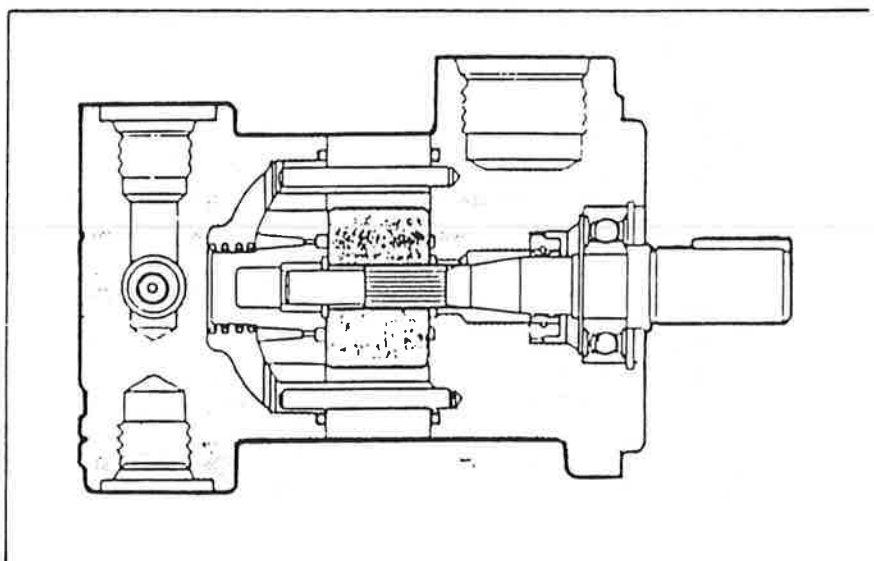
WARNING: USE THIS DRAWING FOR PARTS INFORMATION ONLY.

MODEL	* ROTOR	* VANE KIT (12 VANES)	* RING	PIN	SCREW	CART. KIT
V10-**1*-***0	317681	923499	317674	231042	11156	923471
V10-**2*-***0			317675			923470
V10-**3*-***0			317676			923496
V10-**4*-***0	351247	923500	317677	2456	1278	923469
V10-**5*-***0			317678			923468
V10-**6*-***0	357286	923501	355641	351963	1278	923497
V10-**7*-***0			331813			923498



SERVICE PARTS INFORMATION

V10 SERIES - 20 DESIGN



SDCF SERIES VALVE

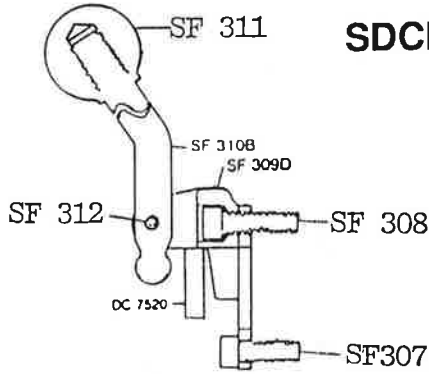


figure 1

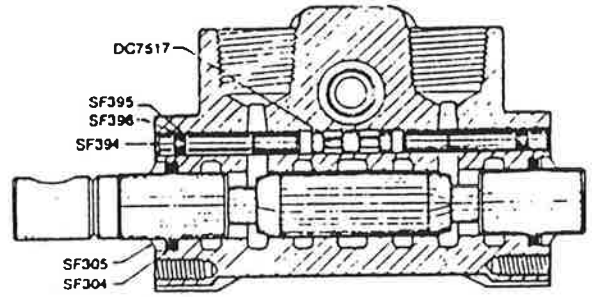


figure 2

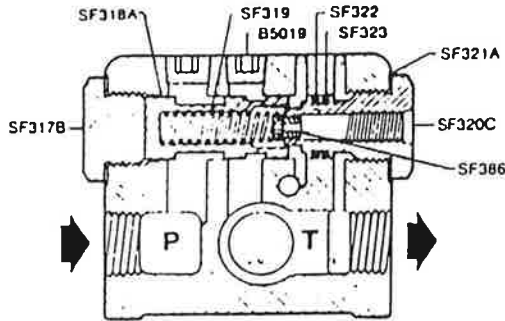
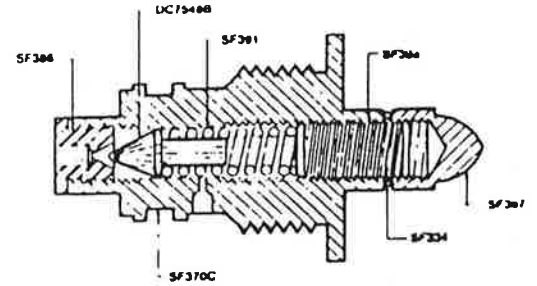


figure 3

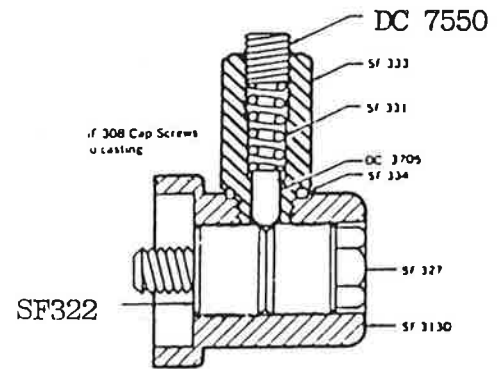


Relief

figure 4

PARTS LIST

B5019	Pipe Plug 1/4" NPT	SF318A	Metering Spool
DC3705	Detent Plunger	SF319	Metering Spring
DC7517A	Shuttle Spool	SF320C	Cartridge
DC7520	Roll Pin 3/16 x 1 1/2	SF321A	Washer
DC7548B	Poppet	SF322	"O" Ring - 016
DC7550	Set Screw 5/16-24	SF323	Back Up Ring - 016
SF304	Seal-210	SF327	HHCS 5/16 18 x 1 1/2
SF305	Wiper	SF331	Spring
SF306	Seal Retainer	SF332-1	Friction Positioning Sleeve
SF307	Cap Screw 1/4" 20 x 5/8" HAS	SF333B	Detent Housing -016
SF308	Cap Screw 1/4" 20 x 3/4" HAS	SF334	Washer
SF309D	Handle Bracket	SF370C	Relief Cartridge
SF310B	Handle	SF386	Seat
SF311	Knob	SF387	Acorn Nut
SF312	Roll Pin 1/8" x 1 3/8"	SF388	Set Screw
SF312A	Washer	SF391	Spring
SF313-D	Detent End Cap	SF394	Shuttle Stop
SF317B	Plug	SF395	"O" Ring
		SF396	Backup
		23120	Seal Kit



NOTE: Use seal retainer, SF 306 between option and main casting.

SDC-F (Friction Detent Kit)

SPARE PARTS AND REPAIR KITS

SPARE PARTS

Part No.	Description
021618	Filter, Hydraulic Oil
080262	Gasket for 1-1/4" and 1-1/2" Nyglass Coupler
080235	Gasket for 1" Nyglass Coupler
005183	Gasket for 1" Grooved Pipe
002439	Gasket for 3" Grooved Pipe
BE491056	Oil Filter
BE298090	Fuel Filter

REPAIR KITS

023120	Seal Kit for Hydraulic Valve (#022850)
085091	Seal Kit for Hydraulic Motor (#085010)
023309	Seal Kit for Hydraulic Pump (#080004B)

**WHEN ORDERING PARTS, BE SURE TO STATE
SERIAL NUMBER OF MACHINE**

